



50W to 600W Single Output General Purpose Power Supplies

Features	Benefits
• 10 Year e-cap Lifetime	• Better Field Reliability
• 5 Year Warranty	• Lower Cost of Ownership
• Global Safety Approvals	• Supports Worldwide Use
• Compact Size	• Easier System Integration



Specification		RWS50B	RWS100B	RWS150B	RWS300B	RWS600B
AC Input Voltage range	VAC	85 - 265VAC (47 - 63Hz), 300VAC for 5 seconds				
Inrush Current (100 / 200VAC)	A	18 / 36	15 / 30	16 / 32	17 / 34	20 / 40
Power Factor (100 / 200VAC)	-	Meets EN61000-3-2 (0.95 / 0.9)				
Input Current (100/200VAC) (typ)	A	1.1 / 0.7	1.3 / 0.7	1.9 / 1.0	3.8 / 2.1	7.2 / 4.0
Temperature Coefficient	-	<0.02%/°C				
Regulation	-	See table				
Overcurrent Protection	-	>105%, 5V & 12V constant current limit & hiccup autorecovery, 24V & 48V constant current limit with autorecovery				
Overvoltage Protection	V	115-140%, Cycle AC line to reset				
Hold Up Time (typ at full load)	ms	20ms				
Leakage Current (max)	uA	750uA maximum, typically 175uA at 115VAC, 63Hz				
Remote Sense	-	No				
Operating Temperature (1)	-	-10° to +70°C, derate above 40°C for 100W and 150W, derate above 50°C for 300W & 600W (see graphs)				
Storage Temperature	-	-30° to +75°C				
Operating Humidity (non condensing)	%RH	30 - 90				
Storage Humidity (non condensing)	%RH	10 - 90				
Cooling	-	Convection		Internal Fan		
Withstand Voltage	-	Input to Ground 2kVAC, Input to Output 3kVAC, Output to Ground 500VAC for 1 min.				
Isolation Resistance	-	>100M at 25°C & 70%RH, Output to Ground 500VDC				
Vibration (non operating)	-	10 - 55Hz: 19.6m/s ² (sweep 1 min) X, Y, Z for 1 hour				
Shock	-	< 196.1 m/s ²				
Safety Agency Approvals (2)	-	UL60950-1, CSA60950, EN60950-1, UL:508, CSA C22.2 No.107.1-01, CE Mark				
Conducted & Radiated EMI	-	EN55011 / EN55022-B, FCC Class B, VCCI-B				
Immunity	-	IEC61000-4-2, -3, -4, -5, -6, -8, -11				
Weight (Typ)	g	230	400	480	900	1600
Size (WxHxD)	mm	34 x 82 x 81.5	94 x 39 x 108	94 x 41 x 128	102 x 41 x 170	120 x 61 x 190
Warranty	Yrs	5				

Notes:

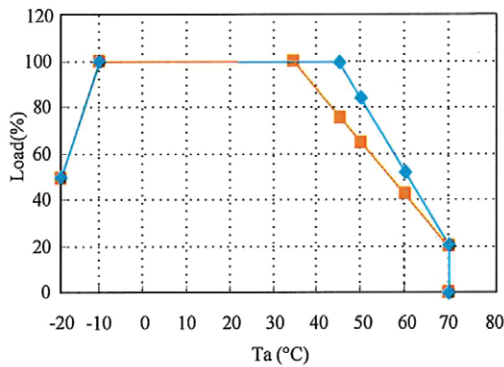
(1) RWS600B operates down to -20°C

(2) UL508 & CSA C22.2 No.107.1-01 on RWS50, RWS100, RWS100-5, -12, -24 & RWS300B-24 only

Model Selector

Model	Voltage	Adjust Range (V)	Max Current (A)	Max Output Power	Load Reg. (mV)	Line Reg. (mV)	Ripple Noise (mV)	Efficiency (typ) % 100/200VAC
RWS50B-5	5V	4.5-5.75	10	50	40	20	120	77 / 79
RWS100B-5	5V	4.5-5.75	14	70	40	20	120	77 / 79
RWS150B-5	5V	4.5-5.75	21	105	40	20	120	77 / 79
RWS300B-5	5V	4.5-5.75	50	250	40	20	120	75 / 78
RWS600B-5	5V	4.5-5.75	100	500	70	20	120	74 / 77
RWS50B-12	12V	10.8-13.8	4.3	51.6	96	48	150	82 / 84
RWS100B-12	12V	10.8-13.8	8.5	102	96	48	150	82 / 84
RWS150B-12	12V	10.8-13.8	13	156	96	48	150	84 / 87
RWS300B-12	12V	10.8-13.8	25	300	96	48	150	79 / 82
RWS600B-12	12V	10.8-13.8	50	600	96	48	150	81 / 84
RWS300B-15	15V	13.5-17.3	20	300	120	60	150	81 / 84
RWS600B-15	15V	13.5-17.3	40	600	120	60	150	81 / 84
RWS50B-24	24V	21.6-27.6	2.2	52.8	192	96	150	86 / 87
RWS100B-24	24V	21.6-27.6	4.5	108	192	96	150	85 / 87
RWS150B-24	24V	21.6-27.6	6.5	156	192	96	150	86 / 89
RWS300B-24	24V	21.6-27.6	12.5	300	192	96	150	85 / 88
RWS600B-24	24V	21.6-27.6	25	600	192	96	150	84 / 88
RWS300B-36	36V	32.4-41.4	8.4	302.4	288	144	200	85 / 88
RWS600B-36	36V	32.4-41.4	16.7	601.2	288	144	200	85 / 88
RWS50B-48	48V	43.2-52.8	1.1	52.8	384	192	200	86 / 88
RWS100B-48	48V	43.2-52.8	2.1	100.8	384	192	200	85 / 87
RWS150B-48	48V	43.2-52.8	3.3	158.4	384	192	200	86 / 89
RWS300B-48	48V	43.2-52.8	6.3	302.4	384	192	200	85 / 88
RWS600B-48	48V	43.2-52.8	12.5	600	384	192	200	85 / 88

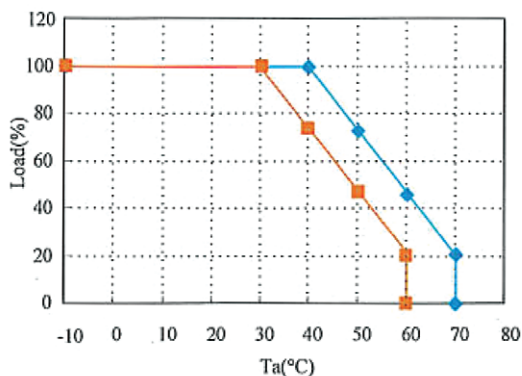
Output Derating RWS50B Series



◆ Mounting (A)
 ■ Mounting (B),(C),(D)

Ta(°C)	Load (%)	
	Mounting(A)	Mounting(B),(C),(D)
-20	50	50
-10 - +35	100	100
45	100	77
50	84	65
60	52	42
70	20	20

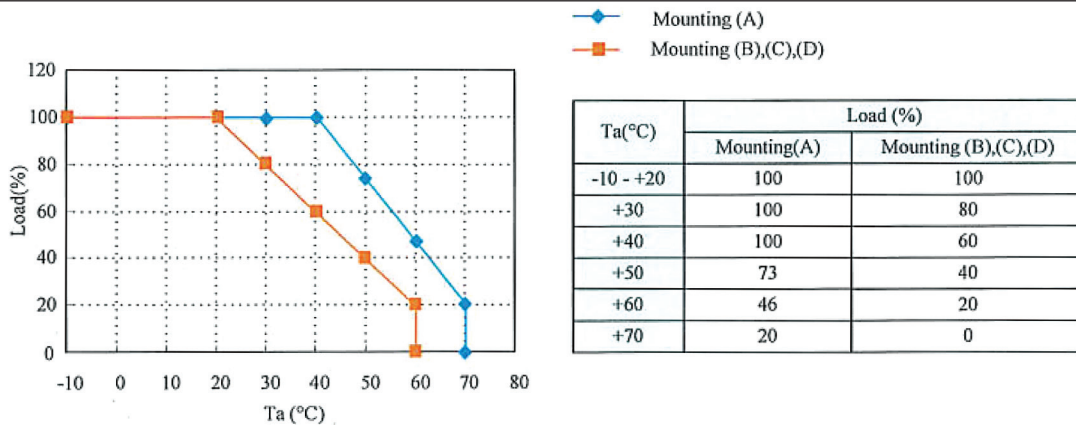
Output Derating RWS100B Series



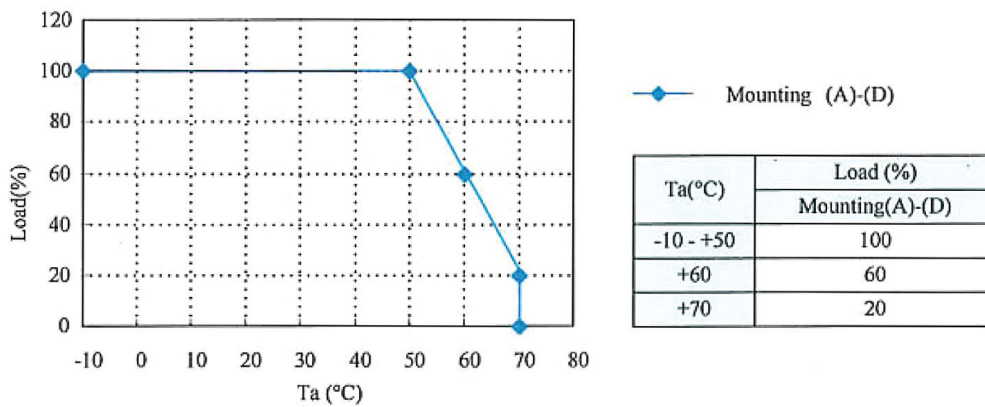
◆ Mounting (A)
 ■ Mounting (B),(C),(D)

Ta(°C)	Load (%)	
	Mounting(A)	Mounting(B),(C),(D)
-10 - +30	100	100
+40	100	73
+50	73	47
+60	46	20
+70	20	0

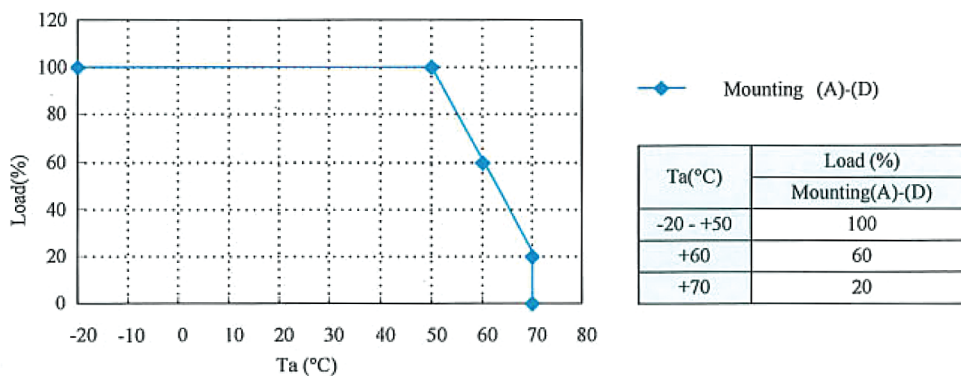
Output Derating RWS150B Series



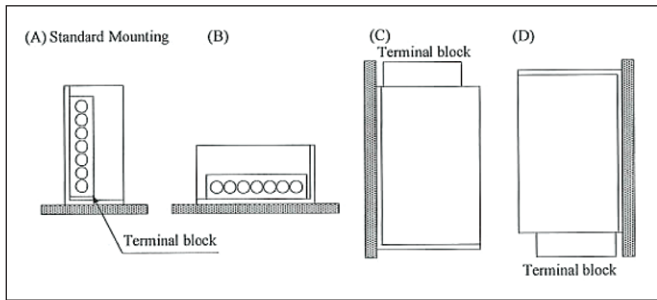
Output Derating RWS300B Series



Output Derating RWS600B Series



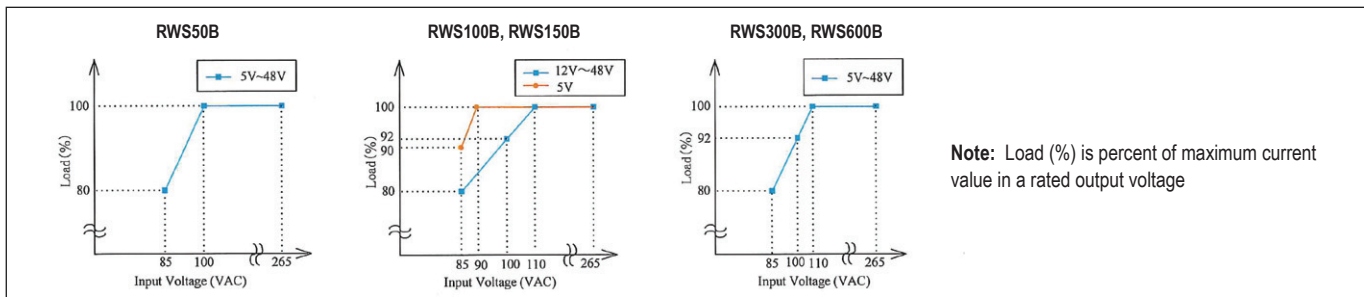
Mounting Direction RWS-B Series



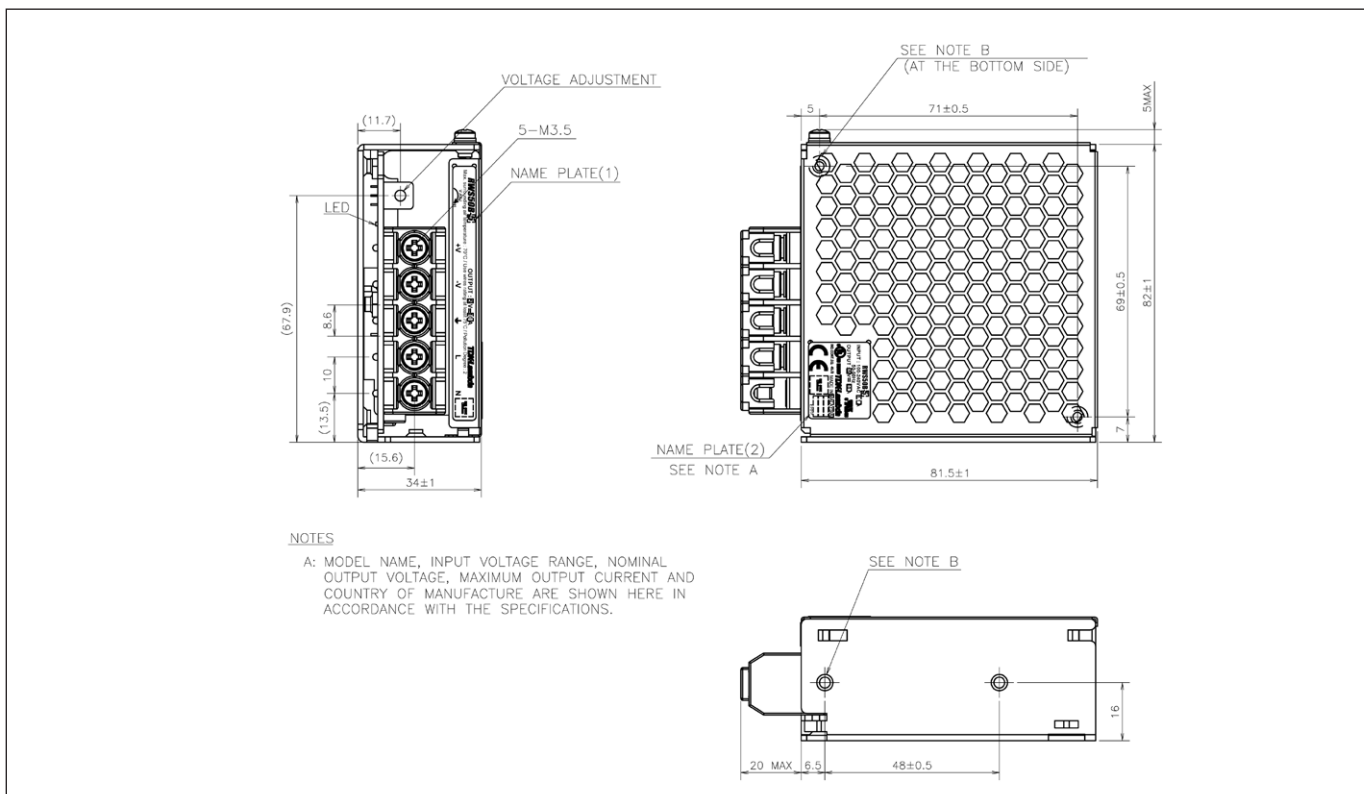
Options

Suffix	Description
/CO2	Double Sided Board Coating
/R	Remote On/Off (RWS300B and RWS600B)
/RFO	Remote On/Off, Remote Sense, Parallel Operation, DC Good Signal (RWS600B only)

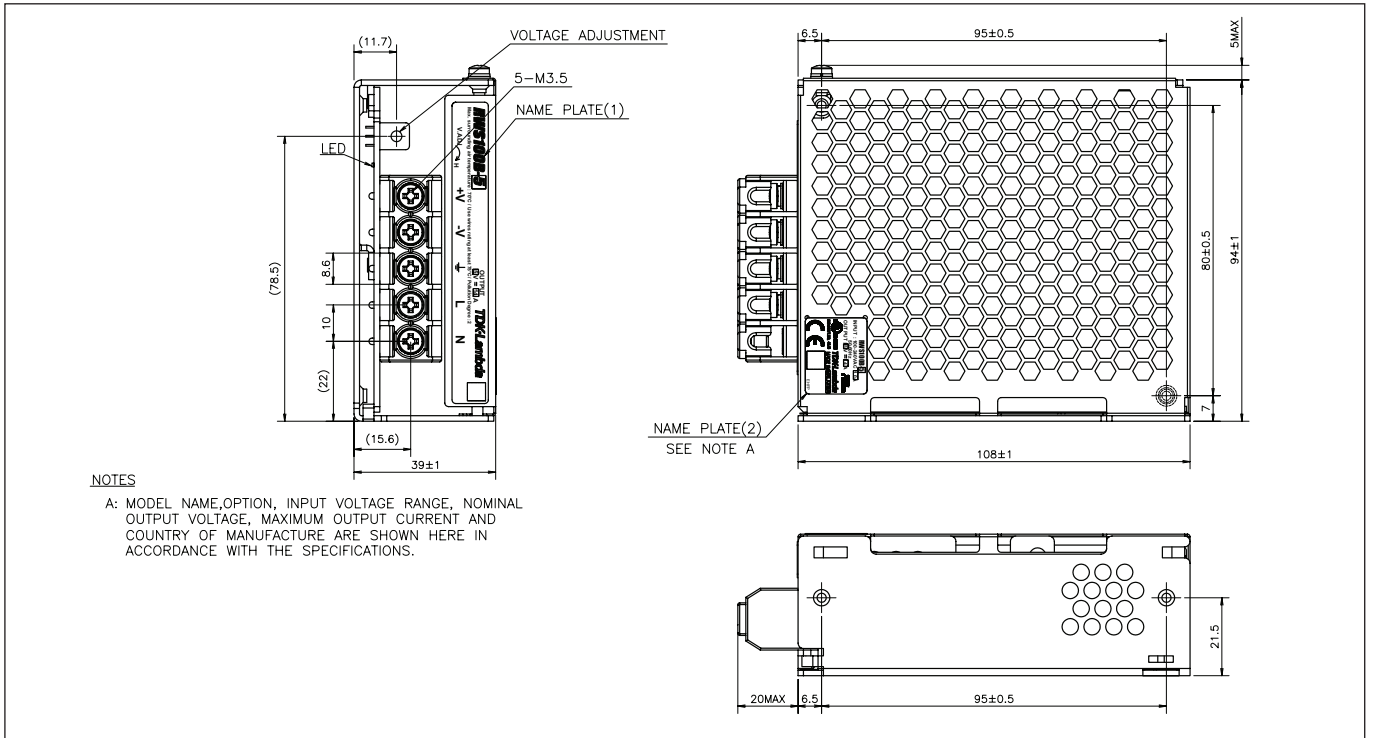
Output Derating according to Input Voltage



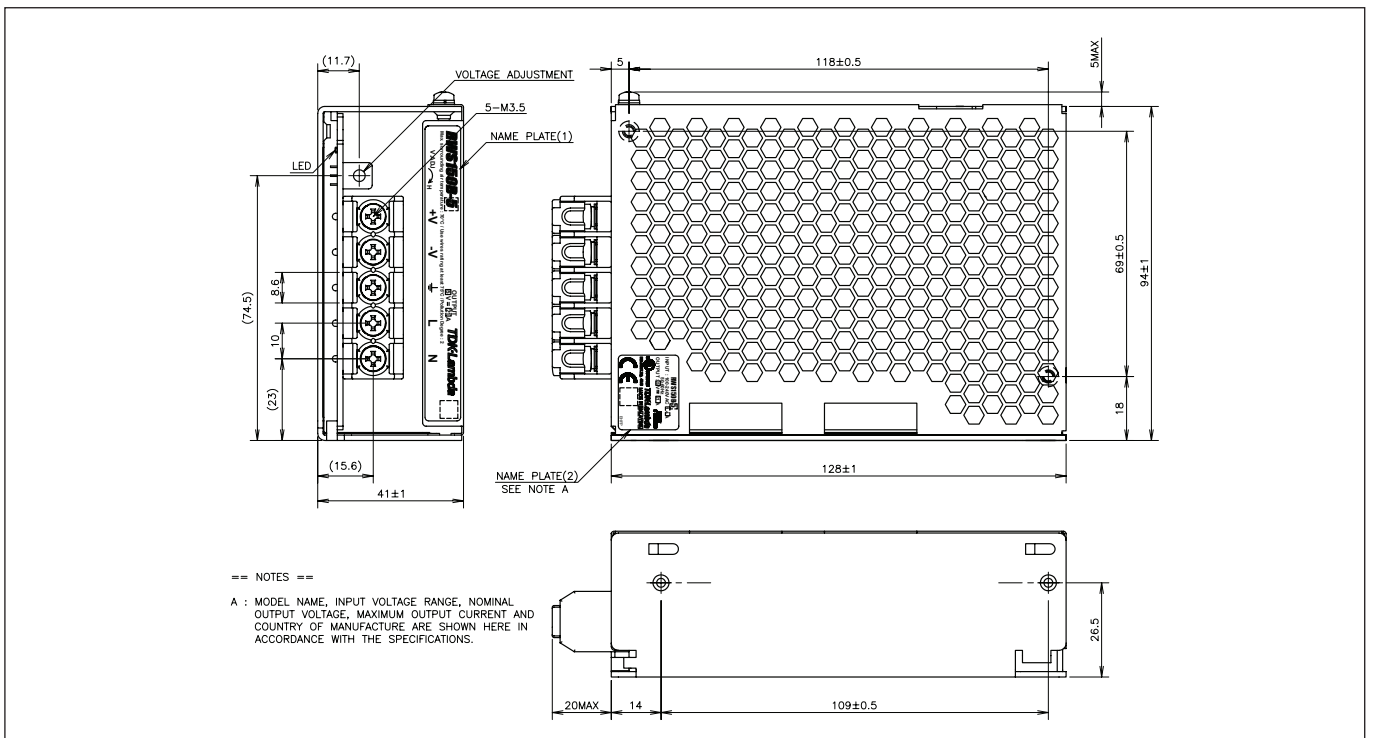
Outline Drawing RWS50B Series



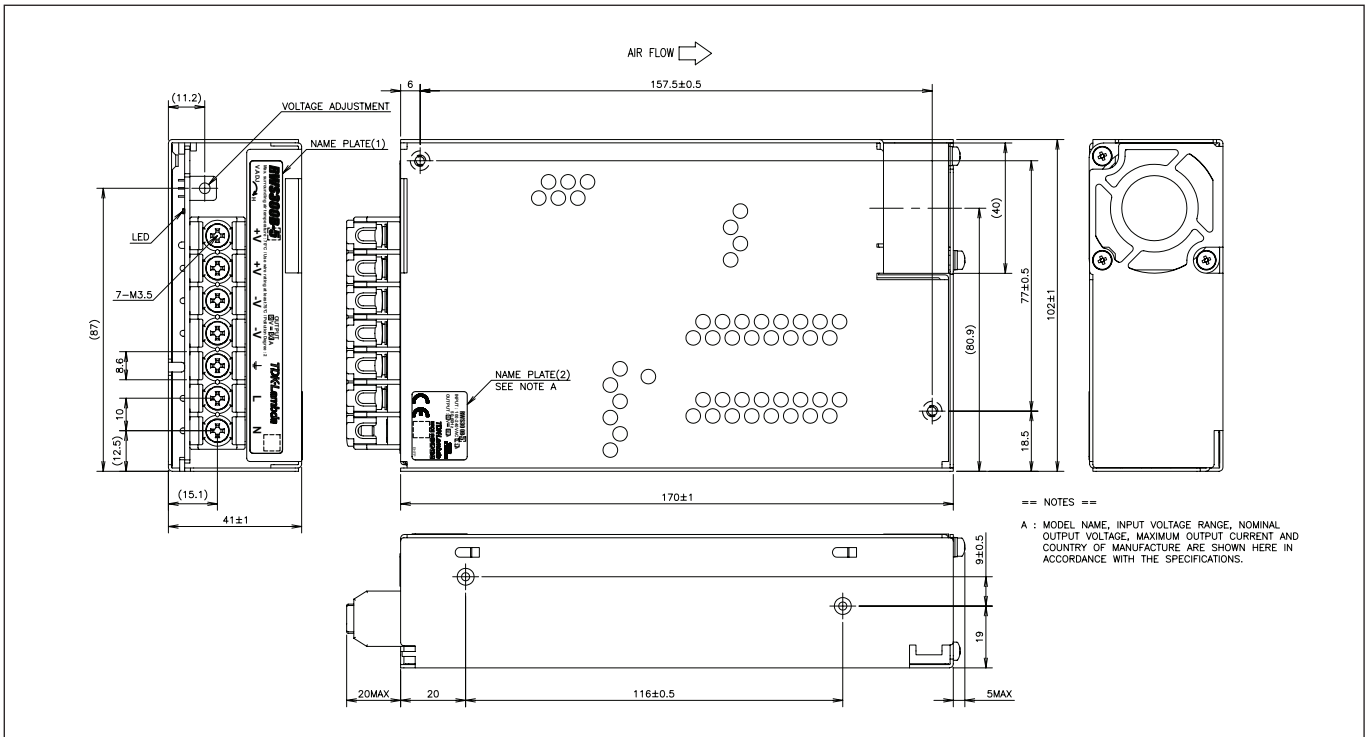
Outline Drawing RWS100B Series



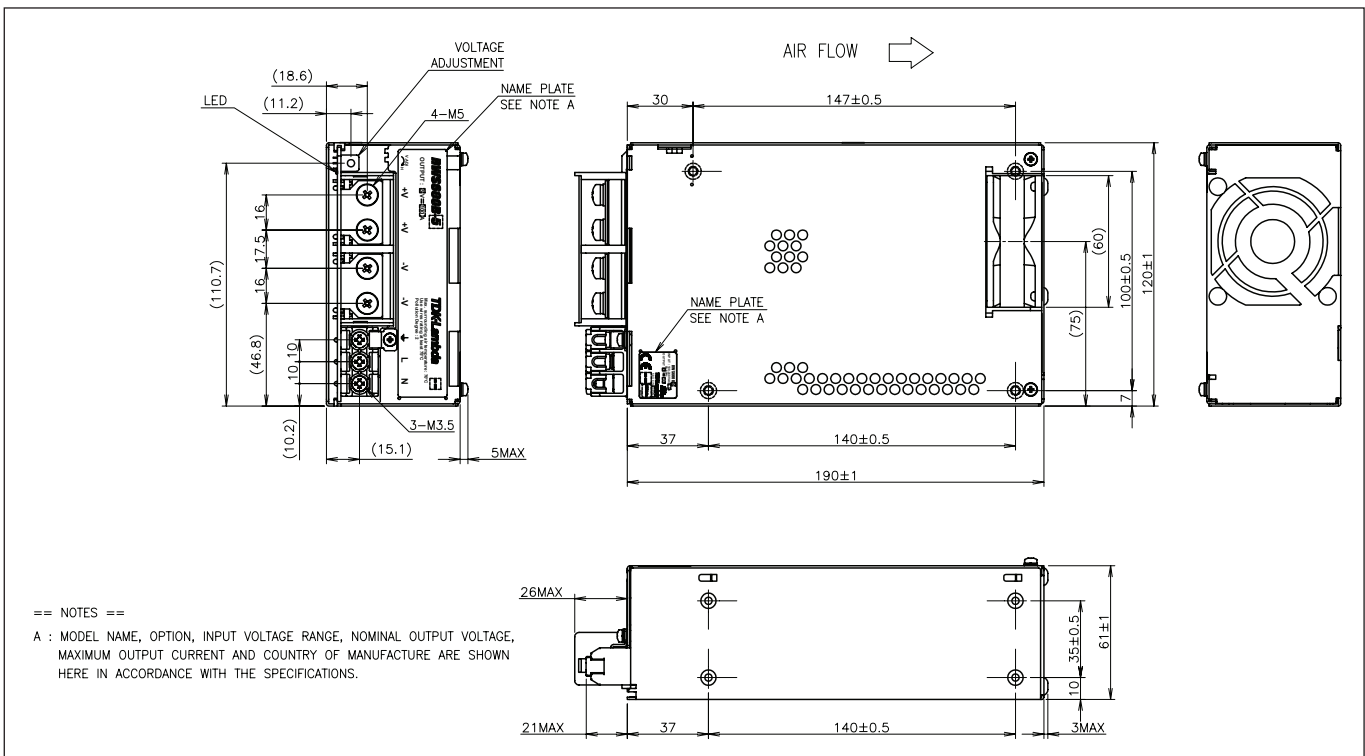
Outline Drawing RWS150B Series



Outline Drawing RWS300B Series



Outline Drawing RWS600B Series





TDK-Lambda France SAS

ZAC des Delaches
CS 41077
9 rue Thuillere
91978 Villebon Courtaboeuf
France
Tel: +33 1 60 12 71 65
Fax: +33 1 60 12 71 66
france@tdk-lambda.com
www.fr.tdk-lambda.com



Italy Sales Office

Via dei Lavoratori 128/130
20092 Cinisello Balsamo (MI)
Italy
Tel: +39 02 61 29 38 63
Fax: +39 02 61 29 09 00
info.italia@it.tdk-lambda.com
www.it.tdk-lambda.com



Netherlands

info@tdk-lambda.nl
www.tdk-lambda.nl



TDK-Lambda Germany GmbH

Karl-Bold-Strasse 40
77855 Achern
Germany
Tel: +49 7841 666 0
Fax: +49 7841 5000
info.germany@de.tdk-lambda.com
www.de.tdk-lambda.com



Austria Sales Office

Aredstrasse 22
2544 Leobersdorf
Austria
Tel: +43 2256 655 84
Fax: +43 2256 645 12
info.germany@de.tdk-lambda.com
www.de.tdk-lambda.com



Scandinavia Sales Office

Valdemarsgade 7
4100 Ringsted
Denmark
Tel: +45 24 63 95 65
Fax: +45 69 80 44 99
info@de.tdk-lambda.com
www.emea.tdk-lambda.com



Switzerland Sales Office

Bahnhofstrasse 50
8305 Dietlikon
Switzerland
Tel: +41 44 850 53 53
Fax: +41 44 850 53 50
info@de.tdk-lambda.com
www.de.tdk-lambda.com



TDK-Lambda UK Ltd.

Kingsley Avenue
Ilfracombe
Devon EX34 8ES
United Kingdom
Tel: +44 (0) 12 71 85 66 66
Fax: +44 (0) 12 71 86 48 94
powersolutions@uk.tdk-lambda.com
www.uk.tdk-lambda.com



TDK-Lambda Ltd.

Kibbutz
Givat Hashlosa 48800
Israel
Tel: +9 723 902 4333
Fax: +9 723 902 4777
info@tdk-lambda.co.il
www.tdk-lambda.co.il



C.I.S.

Commercial Support:
Tel: +7 (495) 665 2627
Technical Support:
Tel: +7 (812) 658 0463
info@tdk-lambda.ru
www.tdk-lambda.ru

Local Distribution

