

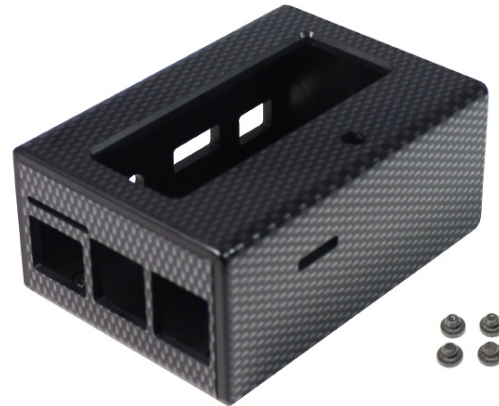
# DEVELOPMENT BOARD ENCLOSURES

## RASPBERRY PI STYLE ENCLOSURES



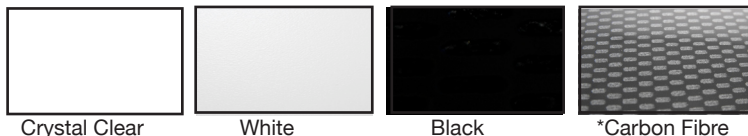
No screws – just add your *Raspberry Pi* filling!

- Designed to house the *Raspberry Pi B+ & PiFace Control & Display 2* via clip-in grooves - **NO SCREWS REQUIRED!**
- All cut-outs and knock-outs are pre-cut into the case
- Wall mountable
- Supplied with four rubber feet
- High Gloss Finish
- Material: thickness 3mm, HB Rated
- Coloured Materials: High Impact Polystyrene (HIPS)
- Carbon Fibre Finish: Acrylic Capped ABS



Raspberry Pi B+ and PiFace assemblies not included

Available Gloss Finish colours:



Crystal Clear

White

Black

\*Carbon Fibre

\* Carbon Fibre Finish: Acrylic Capped ABS

Other colours available upon request



CB PART NO.	COLOURS
CBRPH-P-CLR	Crystal Clear
CBRPH-P-WHT	White
CBRPH-P-CAR	Carbon Fibre
CBRPH-P-BLK	Black