

DEVELOPMENT BOARD ENCLOSURES

RASPBERRY PI STYLE ENCLOSURES

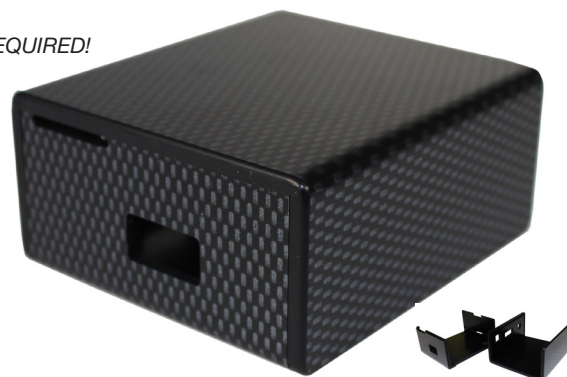
Raspberry Pi A+ Enclosures

No screws, no glue – just add your **Raspberry Pi** filling!

- Designed to house the **Raspberry Pi A+** via clip-in grooves - NO SCREWS REQUIRED!
- All cut-outs are pre-cut into the case - NO MODS REQUIRED!
- I/O Connector can be accessed through a slot in the base of the enclosure
- Supplied with rubber feet
- Gloss Finish
- L 69.6 x W 62.4mm x H 31.9mm

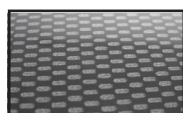
Material:

- Thickness 3mm: HB Rated
- Coloured Materials: High Impact Polystyrene (HIPS)
- Carbon Fibre Finish: Acrylic Capped ABS



Raspberry Pi A+ not included

Available Gloss Finish colours:



*Carbon Fibre

* Carbon Fibre Finish: Acrylic Capped ABS

Other colours available upon request



| CB PART NO. | COLOURS |
|-------------|--------------|
| CBRPAP-CAR | Carbon Fibre |

UNIVERSAL
ENCLOSURES

HAND
HELD
CASES

HEAVY
DUTY
ENCLOSURES

DIN
RAIL
BOXES

INTERFACE
SUPPORTS

CONTROL
STATIONS

DIECAST
& METAL
BOXES

DESKTOP &
INSTRUMENT
CASES

POTTING
BOXES

19"
ENCLOSURES

19"
CABINETS

DEVELOPMENT
BOARD
ENCLOSURES

CUSTOM
SIZED
ENCLOSURES

CUSTOM
SERVICES