

RJ45 socket insert - VS-08-BU-RJ45-10G/LH-1 - 1420401

Please be informed that the data shown in this PDF Document is generated from our Online Catalog. Please find the complete data in the user's documentation. Our General Terms of Use for Downloads are valid (<http://phoenixcontact.com/download>)



RJ45 socket insert, for PCB assembly, CAT6_A, 8-pos., shielded, with angled solder pins, 1x



Key commercial data

Packing unit	1 pc
GTIN	
Weight per Piece (excluding packing)	4.84 g
Custom tariff number	85366990
Country of origin	Germany
Product key	ABNAAD
Note	Made to Order (non-returnable)

Technical data

Mechanical characteristics

Number of positions	8
Number of slots	1
Connection profile	RJ45 8(8)

Ambient conditions

Degree of protection	IP20
----------------------	------

Electrical characteristics

Number of positions	8
Transmission characteristics (category)	CAT6 _A

Classifications

eCl@ss

eCl@ss 4.0	27140816
eCl@ss 4.1	27260701

RJ45 socket insert - VS-08-BU-RJ45-10G/LH-1 - 1420401

Classifications

eCl@ss

eCl@ss 5.0	27260701
eCl@ss 5.1	27260701
eCl@ss 6.0	27260705
eCl@ss 7.0	27440309
eCl@ss 8.0	27440309

ETIM

ETIM 4.0	EC002638
ETIM 5.0	EC000438

UNSPSC

UNSPSC 6.01	30211923
UNSPSC 7.0901	39121522
UNSPSC 11	39121522
UNSPSC 12.01	39121522
UNSPSC 13.2	39121522

Approvals

Approvals


Approvals

GOST

Ex Approvals

Approvals submitted

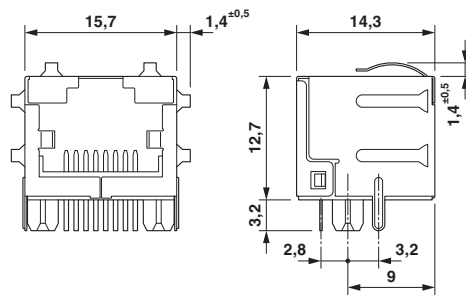
Approval details

GOST 
--

Drawings

RJ45 socket insert - VS-08-BU-RJ45-10G/LH-1 - 1420401

Dimensioned drawing



RJ45 socket insert

Phoenix Contact 2014 © - all rights reserved
<http://www.phoenixcontact.com>