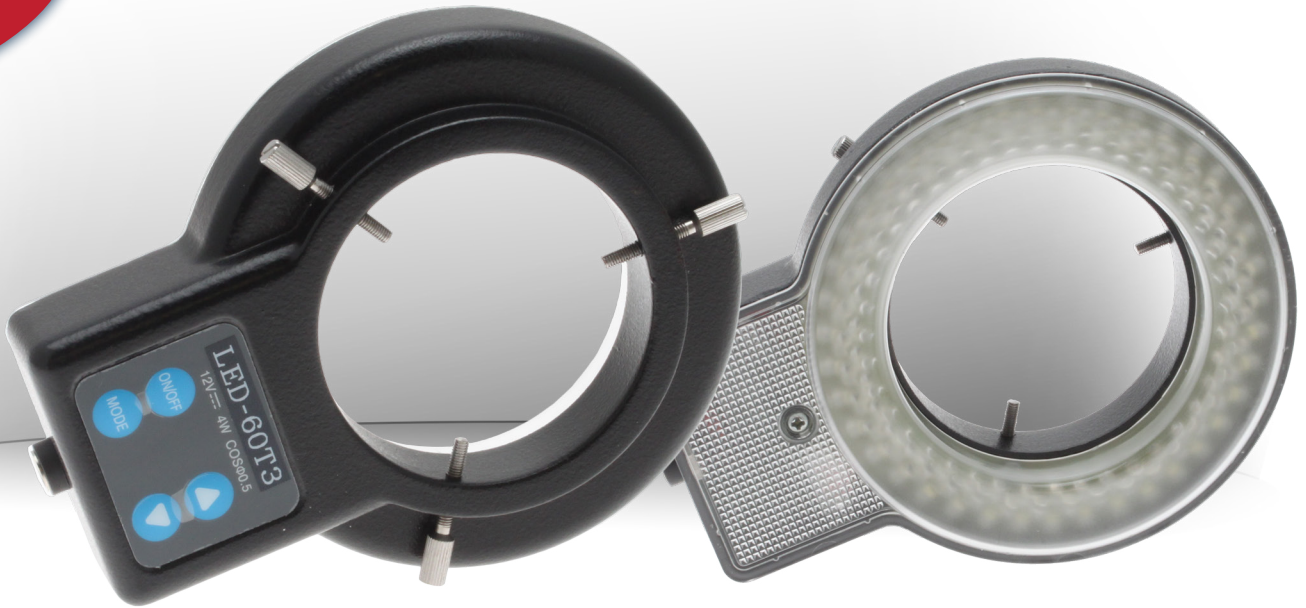
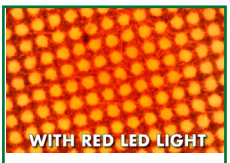
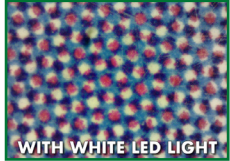


NEW



Ring Light **LED** Triple Color

Enhances Features, Creates Contrast, and Provides More Options

Triple color LED ring light is ideal for applications where you want to create a contrast to enhance a feature of a part. Using color enables you to enhance and see features that would otherwise get washed out with standard white light. The mode function allows you to change from blue to red to white. Brightness control helps provide the correct light intensity for your applications.

The LED lights are flicker free, energy efficient and eco friendly and operate at low temperature and do not change color over time.

Opening 62mm with three thumb screws for easy mounting.

Comes complete with power supply and ring light adapter.

Features

- 120 LEDs, 40 White, 40 Blue and 40 Red
- 7 Step Brightness Control
- Flicker Free
- No color change with temperature
- Energy saving and eco friendly

RING LIGHT LED TRIPLE COLOR

LED COLOR	40 White, 40 Blue, 40 Red
LIGHTING CONTROL	7 Step Intensity Control
LED COLOR TEMPERATURE	7000K for white LED; 620nm for red LED; 465nm for blue LED
LIGHT INTENSITY	200 lumens for white LED; 40 lumens for red; 40 lumens for blue
LED LIFE	Minimum 20,000 hours
INNER DIAMETER	62mm
WORKING DISTANCE	100mm
POWER SUPPLY	DC 12V, 0.5A
PACKAGE CONTENTS	One ring light, ring light adapter and power supply

Part #	Description
26200B-213	Ring Light LED Triple Color