

## MECHANICAL DETAILS

<b>Shell Style Model</b>	FAA* : Fixed plug non-latching nut fixing
<b>Keying</b>	Circular (can rotate), plug has male contact(s)
<b>Housing Material</b>	Brass (chrome plated) shell and collet nut, nickel plated brass latch sleeve and mid pieces
<b>Cable Fixing</b>	0 - 0 mm

**Variant 2** :

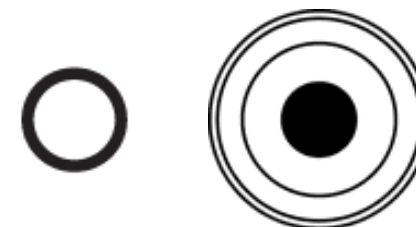
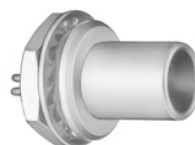
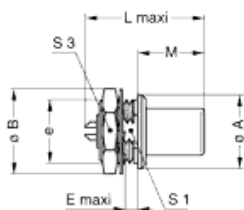
	B	E	L	M	M	e	JA
Mm.	25	4	31	17	17	M18x1.0	22
In.	0.98	0.16	1.22	0.67	0.67		0.87

## PERFORMANCE DETAIL

<b>Insert</b>	3S.140 : 1 Low Voltage
<b>Insulator</b>	T: PTFE
<b>Specifications</b>	
<b>Contact Type:</b>	Solder

## OTHER CHARACTERISTICS







<b>Endurance (Shell)</b>	Endurance (Shell):
<b>Temp (min)</b>	-55°C
<b>Temp (max)</b>	+250°C
<b>Humidity (max):</b>	<=95% [at 60 deg C /140 F]
<b>Vibration:</b>	15 g [10 Hz - 2000 Hz]
<b>Shock Resistance:</b>	100 g [ 6 ms]
<b>Salt Spray</b>	>144 hr
<b>Climatical</b>	50/175/21
<b>Shielding (min):</b>	75 dB (10 MHz)
<b>Shielding (min):</b>	40 dB (1 GHz)
<b>IP Rating</b>	50



## Available Download

 [unipole\\_multipole.pdf](#)

## Related links

-  [Contact](#)
-  [Quote Request](#)
-  [Catalogs Downloads](#)
-  [Catalogs Requests](#)
-  [Sample Request](#)
-  [3D drawings](#)