



**Save money** through using a single multifunction device for testing copper and fibre networks

**Increase efficiency** by simplifying and accelerating cable installation and network troubleshooting

**Reduce downtime in the field** with replaceable RJ45 connectors negating the need to return unit to service centre

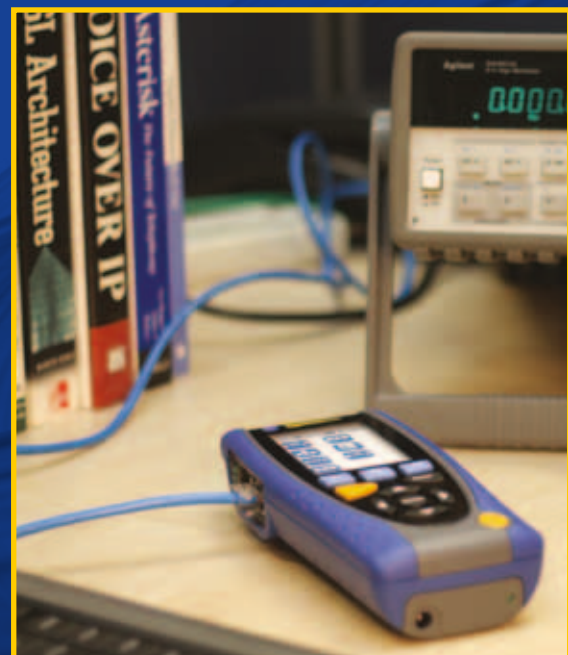
**Future-proof investment** with a cable verifier that is already IPv6 and PoE compatible

- **Excellent wiremapping by pin, with distance to fault**
- **Bright, backlit colour screen and intuitive interface**
- **IPv6 compliant**
- **VLAN support**
- **Traceroute**
- **Test report storage and export**

## **NavITEK II**

*Versatile network technician's tester for troubleshooting and maintenance of active and passive networks across both copper and fibre.*

NavITEK II is a powerful LAN management tester for cable installers, IT or facilities maintenance professionals working in any enterprise, residential, campus or industrial Ethernet environment.





## ***NaviTEK II***

***Everything you need in one compact device***

*NaviTEK II is a highly cost effective solution, comprising multiple advanced testing capabilities in just one handheld tester*

### ***Suitable for copper and fibre***

Eliminate the need to purchase and carry multiple different testers by using one device to conduct active and passive testing across both copper and fibre networks

### ***Wiremapping by pin as well as pair***

Save time on the job and locate wiremap faults more quickly and accurately by testing via both pin and pair, detecting split pairs and identifying the distance to fault

### ***Additional Ethernet troubleshooting capabilities***

Maximise Return on Investment with the added ability to identify Ethernet and Power over Ethernet (PoE) issues, in addition to verifying Ethernet connectivity

### ***Support for IPv6 and PoE***

NaviTEK II supports both IPv4 and IPv6 internet addresses, as well as PoE, making it a future-proof investment

### ***Reporting of test results***

Simplify customer reporting and create accurate documentation on jobs undertaken using NaviTEK II to generate and store test results in standards compliant XML format. Additionally, view and export results to enable report printing

### ***802.1x compatibility***

Log onto networks secured by this protocol, avoiding unnecessary security complications and lengthy project delays

## ***Applications for NaviTEK II***

***Verify cable connections***  
*before, during and after moves, adds and changes*

***Test Power over Ethernet***  
*and LAN/internet connectivity when installing new devices*

***Troubleshoot connectivity***  
*issues when a workstation or laptop cannot access the LAN*

***Document network connectivity and Ethernet status***  
*without needing an additional cable certifier*





# NaviTEK II

*Extremely intuitive to use, all products in the NaviTEK II range are operated via icons displayed on a large backlit colour screen*

## Ports for both copper and fibre

Save money by employing a single device to test entire networks



Interchangeable fibre optic interface

## User-exchangeable RJ45 inserts

Reduce downtime by not needing to send tester to a service centre



Interchangeable RJ45 socket

## Virtual keyboard

Work efficiently, quickly and easily input data



Virtual keyboard

## Autotest function

Reduce network downtime by speeding up testing of common applications



AUTO  
Autotest

## A choice of power inputs

Flexibility of working environment through options of rechargeable or alkaline batteries and mains power



Mains

## USB interface and internal memory



Internal memory

Generate accurate customer reports more easily by exporting data via memory sticks



Backlit screen

## 2.8" colour screen

Reduce the chance of false readings with a clear, bright and backlit screen



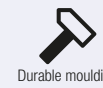
Cursor keys

## Multifunction and cursor keys



Multifunction  
softkeys

Intuitive interface minimises user training requirements, plus improves productivity in the field as tests can be completed in minimal time



Durable moulding

## Durable rubber moulded housing

Robust tester that stands up to demands of the user

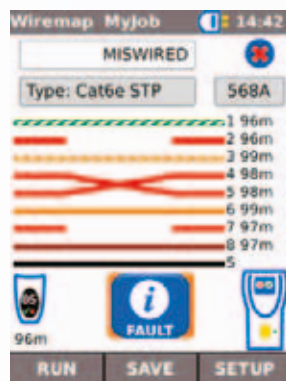


### Large colour screen



- Easy to see
- Easy to navigate
- Quick to test

### Faster faultfinding



- Clearly see cabling faults
- Know where they are
- Validate repairs

### PoE and IPv6



- Be prepared for any challenge
- Test and validate any networks
- Test and validate PoE resources



## ***NaviTEK II***

When installing copper or fibre cables, cabling installers demand complete confidence in their equipment, with knowledge that it won't let them down in the working environment, be it a site under construction, or in residential or office premises. The NaviTEK II is designed to exceed these expectations.

A rubber moulded housing is perfect for the place of work that requires a rugged and robust tool. When working in poorly lit areas, the bright, backlit colour screen displays test results clearly.

The choice of power inputs is beneficial when working in different locations – batteries can be used when away from a power source, plus the ability to use standard alkaline batteries provides an excellent back-up for the supplied rechargeable batteries.

Intuitive screen icons and user-exchangeable RJ45 inserts also ensure the installer can maximise their productivity in the working day.

The advanced wiremap function tests by pin and pair, highlights distance to fault and generates detailed reports proving job completion to ensure end customer satisfaction and payment.

The NaviTEK II is the perfect companion for the IT professional maintaining and troubleshooting issues on copper and fibre networks. When carrying out moves, adds and changes, or testing common applications, the network scanning and Autotest functions quickly verify connectivity.

Supporting IPv4 and IPv6 internet addresses, as well as PoE, the IT and network maintenance professional will see return on their future-proofed investment.

When working in an industrial Ethernet environment, it is essential to minimise network downtime due to the costly implications.

Thanks to Autotest functions, virtual keyboard and intuitive screen icons, NaviTEK II is an essential portable troubleshooting device that is easy to use and understand by the non-IT professional.

The often harsh surroundings of an industrial Ethernet environment can create cabling issues, necessitating a durable and robust tester for accurate operation and reporting.

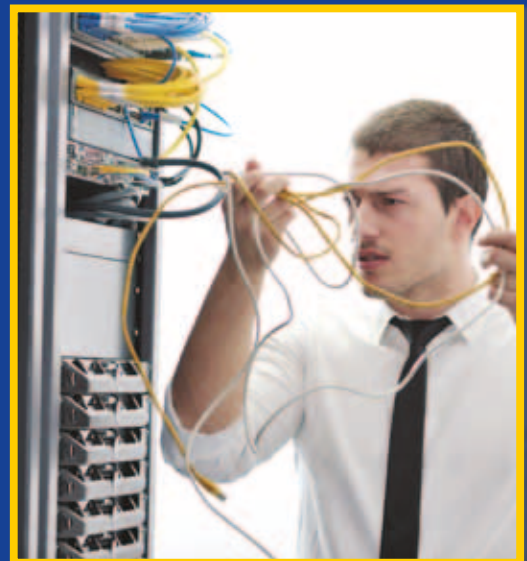
Verifying Ethernet connectivity and pinpointing Ethernet and PoE issues is completed quickly to enable rapid fault finding.

Providing multiple benefits to all users, NaviTEK II is a powerful LAN management tester designed for troubleshooting and maintenance of active and passive networks across both copper and fibre.

### ***Cable installers***



### ***IT & network maintenance***



### ***Industrial Ethernet***





# ***NavITEK II***

## ***Specification Comparison***

<b>Functions</b>	<b><i>NavITEK II</i></b>	<b><i>NavITEK II PLUS</i></b>	<b><i>NavITEK II PRO</i></b>
Endpoint LAN testing over copper	✓	✓	✓
IPv4	✓	✓	✓
IPv6	✓	✓	✓
Advanced wiremap including length	✓	✓	✓
Wiremap for cross-over cables (copper)	✓	✓	✓
Wiremap for 2 pair copper cables	✓	✓	✓
Wiremap for industrial cables	✓	✓	✓
PoE detection	✓	✓	✓
Tone generator	✓	✓	✓
Ping test	✓	✓	✓
Traceroute test	✓	✓	✓
Hub blink	✓	✓	✓
Choice of power sources	✓	✓	✓
DHCP client	✓	✓	✓
10/100/1000 Mb/s	✓	✓	✓
User-exchangeable RJ45 inserts	✓	✓	✓
Backlit colour screen	✓	✓	✓
EDP/CDP/LLDP		✓	✓
VLAN support		✓	✓
Network scan		✓	✓
Traffic utilisation bar graph		✓	✓
Results storage/export		✓	✓
802.1x logon			✓
Optical power indication			✓
Loopback mode over copper			✓
Loopback mode over fibre			✓
Endpoint LAN testing over fibre			✓





# NavITEK II

## Versions to suit all requirements

*NavITEK II is available in three models with specifications to meet all user needs*

## Ordering Information

**NavITEK II** - Entry model facilitates LAN testing over copper networks and includes functionality for detecting Power over Ethernet

Part No.	Kit Contents
R153000	<b>NavITEK II</b> 1 x NavITEK II test unit, 1 x Remote unit No. 1, 4 x AA dry cell batteries (non-rechargeable), 2 x Patch cables - 30cm, Cat. 5e STP, 1 x Manual on CD, 1 x Quick reference guide, 1 x Carry case

**NavITEK II PLUS** - Introduces additional testing capabilities, including support for VLAN and storage for test results

Part No.	Kit Contents
R151000	<b>NavITEK II PLUS</b> 1 x NavITEK II PLUS test unit, 1 x Remote unit No. 1, 1 x Rechargeable Power Module 1 x PSU EU/UK/US adaptors, 2 x Patch cables - 30cm, Cat. 5e STP, 1 x Manual on CD, 1 x Quick reference guide, 1 x Carry case

**NavITEK II PRO** - Fully featured solution, suitable for copper and fibre networks

Part No.	Kit Contents
R151002	<b>NavITEK II PRO</b> 1 x NavITEK II PRO test unit, 1 x Remote unit No. 1, 1 x Rechargeable Power Module 1 x PSU EU/UK/US adaptors, 2 x Patch cables - 30cm, Cat. 5e STP, 1 x Manual on CD, 1 x Quick reference guide, 1 x Carry case,



**NavITEK II PRO**

## Optional Accessories

Part No.	Description
150054	1 x Active remote No. 1
150050	1 x Active remote set No. 2 - 12
151053	1 x NiMH power module
150055	2 x Patch cables - 30cm, Cat. 5e STP
151051	1 x Power supply with EU/UK/US adaptor
151052	Alkaline battery module
MGKSX1	1 x 1000BASE-SX Fibre kit. Includes 850nm SFP (Small Form factor Pluggable) SX transceiver, LC/LC and LC/SC duplex multimode cables and SC/SC duplex adaptor
MGKLX2	1 x 1000BASE-LX Fibre kit. Includes 1310nm SFP (Small Form factor Pluggable) LX transceiver, LC/LC and LC/SC duplex singlemode cables and SC/SC duplex adaptor
MGKZX3	1 x 1000BASE-ZX Fibre kit. Includes 1550nm SFP (Small Form factor Pluggable) ZX transceiver, LC/LC and LC/SC duplex singlemode cables and SC/SC duplex adaptor
62-164	1 x IDEAL amplifier probe
33-963-10	1 x Fibre cleaning pen for SC, ST and FC adaptor
33-963-11	1 x Fibre cleaning pen for LC and MU adaptor
150056	1 x Optical fibre multimode 2m duplex cable with LC-LC connectors
150057	1 x Optical fibre singlemode 2m duplex cable with LC-LC connectors
150059	1 x Active remote set No. 2 to No. 6
151054	1 x Carry case
150058	1 x RJ45 insert extraction tool, 10 x Lifejack RJ45 inserts

**Dealer Stamp**

## IDEAL INDUSTRIES NETWORKS DIVISION

Unit 3, Europa Court, Europa Boulevard, Warrington, Cheshire, WA5 7TN.  
United Kingdom

+44 (0)1925 444 446  
uksales@idealnwd.com