



### Key Features

- Adjustable mount
- SMA/SMA-RP male connector
- Quad band GSM frequency
- 6dBi peak gain
- ISM: 868 and 915MHz
- 3G: 2100MHz

### General Description

The Siretta Multiband whip antenna is based on a 2008 redesign giving excellent performance in the quad band GSM 800/900/1800/1900/2100MHz frequencies.

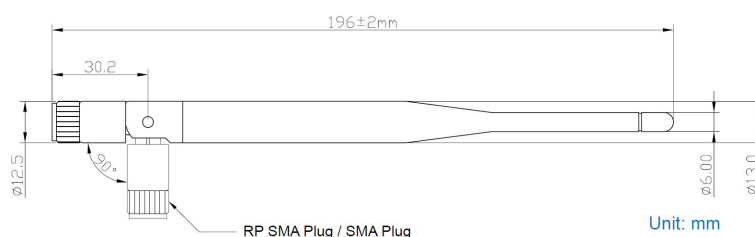
Terminated with an SMA/SMA-RP male connector, the unique knuckle adjusts through a 0 / 45 & 90 degree angle and swivels to ensure a vertical polarity when fitted to the radio module.

The radiating element consists of a two part design and is over moulded in black, high grade rubber giving a rugged, stylish finish.

The Delta 6A is a popular antenna for customers requiring a straightforward to fit, reliable product and is qualified and used with many of today's GSM / GPRS and 3G terminals.

### Additional Considerations

- Ensures antenna can be flexibly installed with equipment
- Fits to most popular GSM / GPRS and 3G terminal equipment
- Does not rely on mounting on metallic surface
- Meets all EU compliance criteria for electronic goods



Rev 1.2

### Key Specifications - Electrical

Storage temperature range:	-30 to 75 °C
Operating temperature range:	-20 to 60 °C
Impedance:	50 ohm
VSWR:	<2:1
Operating frequencies:	850, 900, 1800, 1900MHz
Polarization:	Vertical
Radiating element:	Dipole
Return loss:	880MHz - 6dB 960MHz - 12dB 1710MHz - 10dB 1990MHz - 9.9dB

### Gain

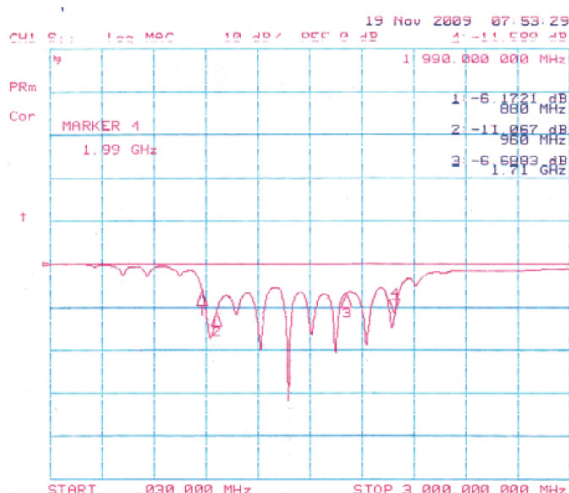
ISM	
868MHz:	4.1dBi
915MHz:	4.05dBi
GSM	
850MHz:	3.75dBi
900MHz:	4.02dBi
1800MHz:	6.78dBi
1900MHz:	6.2dBi
3G	
2100MHz:	3.44dBi

### Key Specifications - Mechanical

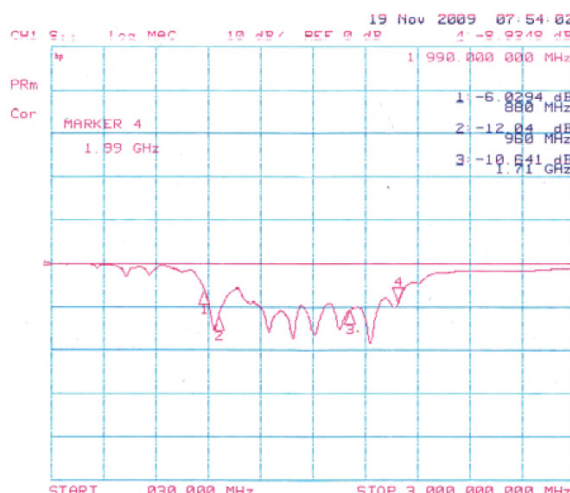
Dimensions:	187.5mm x 9.6mm
Connector:	SMA
Mounting method:	Direct connect

### Test Reports

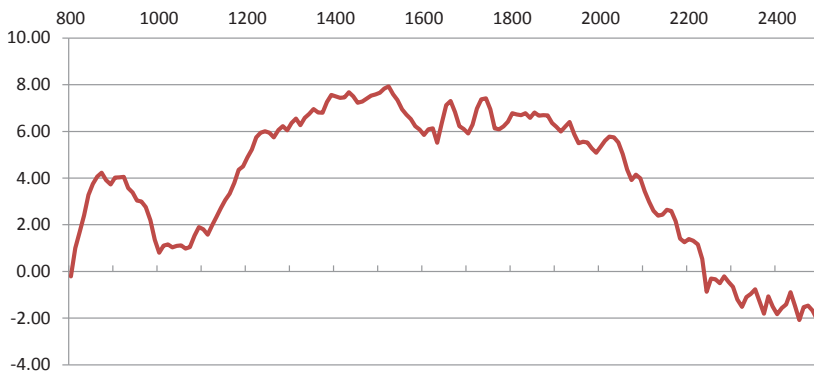
#### Vertical



#### Horizontal

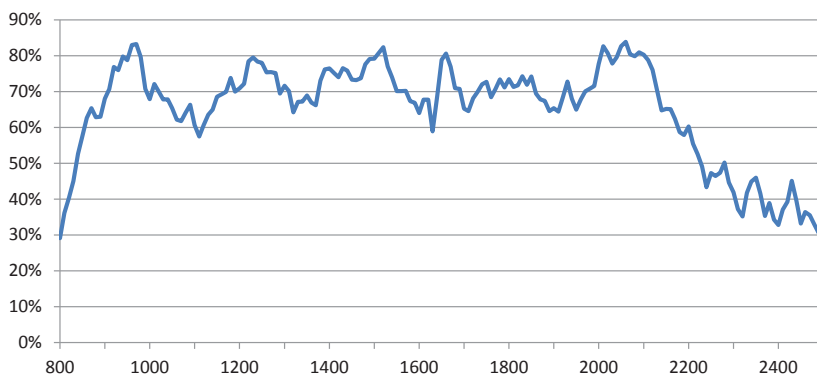


Peak Gain (dBi)



**UL Tested (Basingstoke, UK)**  
Part: DELTA6A/x/SMAM/S/S/11  
Ref No: 10339609JD01  
Date: 28/05/2014

Efficiency %



**UL Tested (Basingstoke, UK)**  
Part: DELTA6A/x/SMAM/S/S/11  
Ref No: 10339609JD01  
Date: 28/05/2014

## Ordering Details

Part number	Description
DELTA6A/X/SMAM/S/S/11	Quad Band GSM, 3G & ISM Swivel Antenna, SMA Male Connector