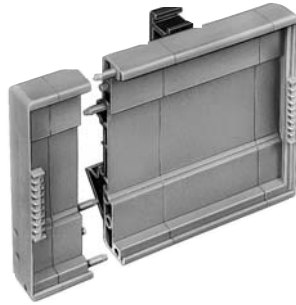


Electronic housings WEB housing system

housing system

System advantages:

- Open modules can be snapped together to any length
- Complete custom design possible
- The modular design enables quick assembly
- High torsional rigidity due to the firm interconnection of the individual elements
- Can be snapped onto all 32/35 DIN rails using the universal foot



Material:

Housing: PA 6 GU30 UL 94-HB

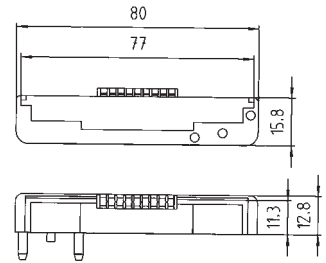
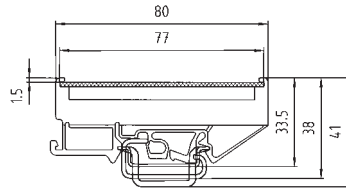
Foot: PA 66 UL 94-V2

WEB 1002

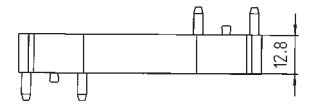
Dimensions (mm): W x H x D

Variable x 80 x 33.5

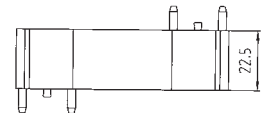
Individual parts	Type	Part No.	Std. Pack
1. End cover with marking tag carrier	12.8 mm wide	01.001.6493.0	50
2. Middle section of housing	12.8 mm wide	01.001.6553.0	50
3. Middle section of housing	22.5 mm wide	01.001.6653.0	50
4. Middle section of housing	44.8 mm wide	01.001.6753.0	50
5. Universal foot	23 mm wide	05.584.8853.0	50
5. Universal foot (overall width from 70.4 mm and wider)	68 mm wide	05.584.8953.0	50
Accessories			
Mounting rail 35, DIN rail 7.5 mm high L = 2 m	35 x 27 x 7.5 EN 50022	98.300.0000.0	1
Mounting rail 35, DIN rail 15 mm high L = 2 m	35 x 24 x 15 EN 50022	98.360.0000.0	1
Mounting rail 32, G-rail L = 2 m	9006 EN 50035 G-32	98.190.0000.0	1
PCB (not included)	see drawing for dimensions		
End clamp, Polyamide 8 mm wide TS 35	9708/2 S 35	Z5.522.8553.0	100
End clamp, Polyamide 10 mm wide U-Foot	WE 1/U	Z5.523.5753.0	100
Marking tag, unmarked	9003 C	04.242.0850.0	500
Marking tag, marked	9003 CB	04.842.0850.0	500



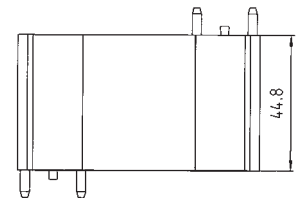
Width 12.8 mm 01.001.6493.0 50



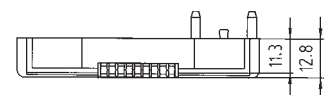
Width 12.8 mm 01.001.6553.0 50



Width 22.5 mm 01.001.6653.0 50

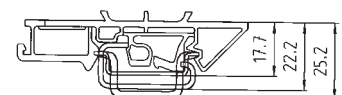


Width 44.8 mm 01.001.6753.0 50



01.001.6493.0 50

Universal foot



Width 23 mm 05.584.8853.0 50

Width 68 mm 05.584.8953.0 50

(overall width from 70.4 mm)