



# HCP.2S.304.CLLPV

## MECHANICAL DETAILS

**Shell Style Model** HCP\* : Fixed receptacle  
nut fixing  
watertight or vacuum-tight (back  
panel mounting)

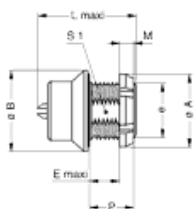
**Keying**

**Housing Material** Brass (chrome plated) shell and  
collet nut, nickel plated brass  
latch sleeve and mid pieces

**Cable Fixing** 0 - 0 mm

**Variant 2** PV : Watertight / Vacuum-tested

	A	B	E	L	M	P	e
Mm.	20	20	12.5	29	3.5	16.5	M16x1.0
In.	0.79	0.79	0.49	1.14	0.14	0.65	



## PERFORMANCE DETAIL

**Insert** 2S.304 : 4 Low Voltage

**Insulator** L: PEEK

**Specifications**

**Contact Type:** Solder

**Max. Matings:** 5000

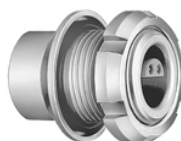
**Contact Dia.:** 1.3 mm (0.051in)

**Bucket Dia.:** 1 mm (0.039in)

**Max. Solid** 0.5 mm<sup>2</sup> (AWG 20)

**Max. Stranded** 0.5 mm<sup>2</sup> (AWG 20)

**R (max):** 3.6 mOhm



## OTHER CHARACTERISTICS

**Endurance (Shell)** Endurance (Shell):

**Temp (min)** -20°C

**Temp (max)** +80°C

**Humidity (max):** <=95% [at 60 deg C /140 F]

**Vibration:** 15 g [10 Hz - 2000 Hz]

**Shock Resistance:** 100 g [ 6 ms]

**Salt Spray** >144 hr

**Climatical** 20/80/21

**Shielding (min):** 75 dB (10 MHz)

**Shielding (min):** 40 dB (1 GHz)

**R leak (He) (max):** 0.0000001 mbar<sup>\*</sup>/s (if  
vacuum-tested)

**Pressure** 40 bars

**IP Rating** 68

