

## For More Information

[te.com/ib](http://te.com/ib)

## TE Technical Support Center

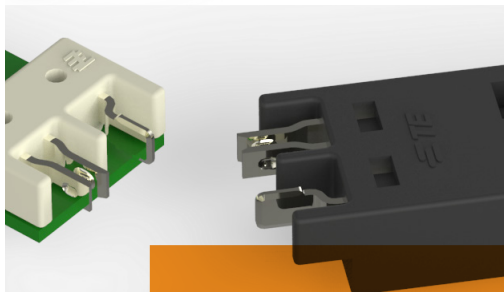
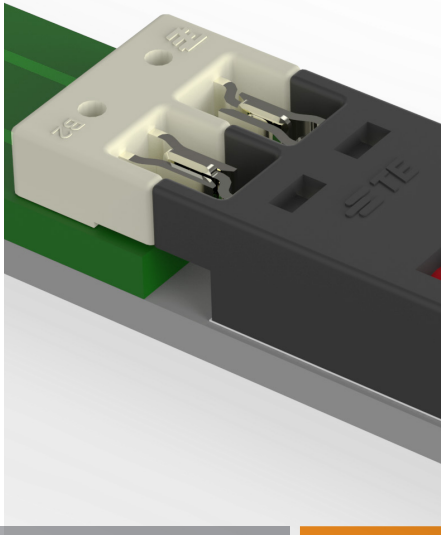
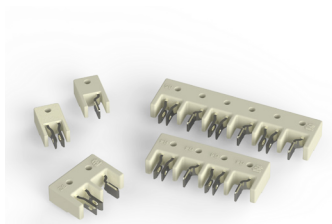
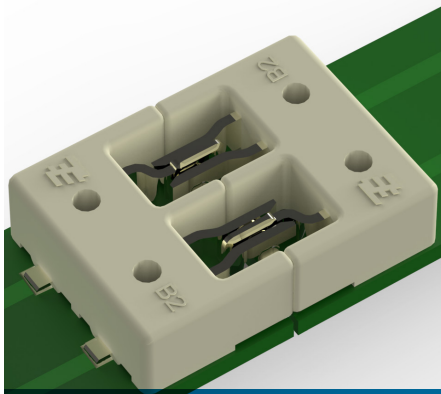
- Internet: [te.com](http://te.com)
- USA: 1-800-522-6752
- Canada: +1-905-475-6222
- Mexico: +52 (0) 55-1106-0800
- Latin/S. America +54 (0) 11-4733-2200
- Germany: +49 (0) 6251-133-1999
- UK: +44 (0) 800-267666
- France: +33 (0) 1-3420-8686
- Netherlands: +31 (0) 73-6246-999
- China: +86 (0) 400-820-6015

### te.com

© 2014 TE Connectivity Ltd. family of companies. All Rights Reserved

TE Connectivity and TE connectivity (logo) are trademarks. Other logos, product and/or company names might be trademarks of their respective owners.

7-1773456-9 JG10a PDF 08/2014

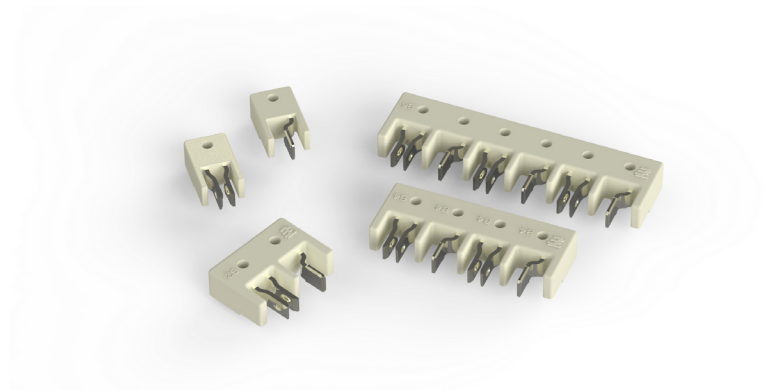


# MINIATURE HERMAPHRODITIC CONNECTOR SYSTEM

Low profile board to board  
and NEW wire to board connectors

## Miniature Hermaphroditic Connector

The low profile SMT miniature hermaphroditic board-to-board connectors are designed to provide power between adjacent linear printed circuit boards. Ideal for use in compact spaces with features designed for vacuum pick and place that make it suitable for high volume automated manufacturing.



### Electrical

- Current Rating: 3 A max.
- Voltage Rating: 300 VAC / DC (UL)  
50 VAC / DC (TUV)
- Dielectric Withstanding Voltage: 1600 VAC

### Mechanical

- Operating Temperature: -40°C to +105°C (UL)  
-35°C to 65°C (TUV)

### Materials

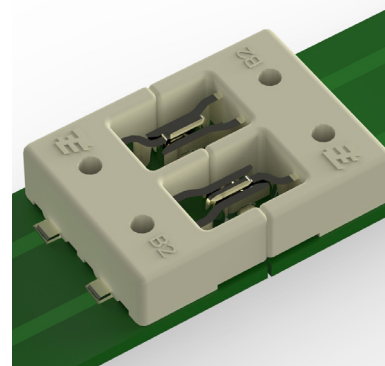
- Housing: High temperature thermoplastic UL 94V-0
- Contacts: Copper alloy, tin over nickel plated

### Standards and Specifications

- Product Specification: 108-106050
- Application Specification: 114-106050
- UL and cUL Recognized: File No. E321453
- EN 60838-1 & EN 60838-2-2: Certificate No. 50280860

### Product Offering

Part #	Description	
1971567-1	2 position hermaphroditic board to board connector	
1971567-2	4 position hermaphroditic board to board connector	
1971567-3	6 position hermaphroditic board to board connector	
2213203-1	2 position mini hermaphroditic insert molded wire to board lead assembly <i>(mates with 1971567-1)</i>	
1971742-1	1 position blade board to board connector	Mating Pair
1971743-1	1 position receptacle board to board connector	



### Key Benefits

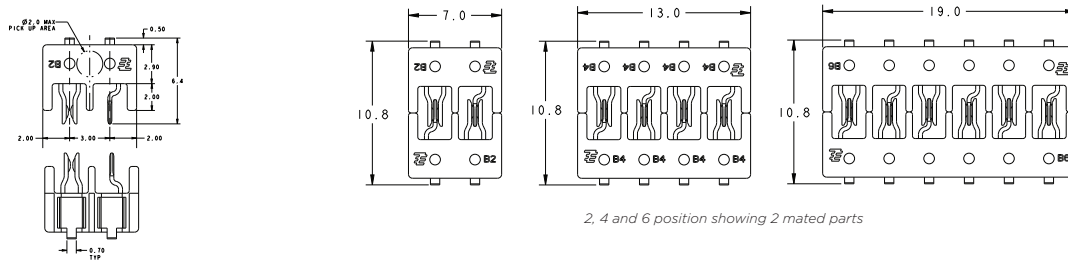
- Reduce assembly time, minimize inventory and lower production costs with connectors that mate and un-mate to themselves horizontally and vertically
- Connect data and control signals with 2, 4 and 6 position hermaphroditic versions
- Automate production with flat top surface for vacuum pick and place assembly
- Support re-flow processing with high temperature material

### Applications

- Architectural and sign lighting
- Retail and display lighting
- Fluorescent LED retrofit lighting
- Cabinet or furniture lighting
- Commercial / residential cove lighting
- Access control equipment
- Thermostats
- Vending Machines

## Dimensions

2, 4 and 6 position Mini Hermaphroditic Connectors <sup>1</sup>

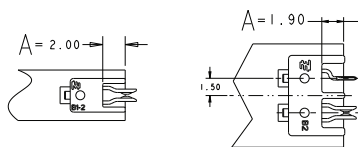


2, 4 and 6 position showing 2 mated parts

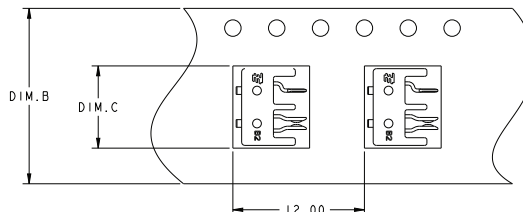
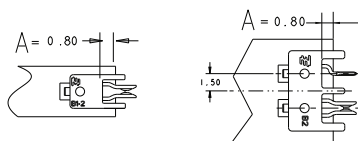
<sup>1</sup> All features and dimensions of 2, 4 and 6 position versions are the same except as shown

### PCB Layout and Packaging Details

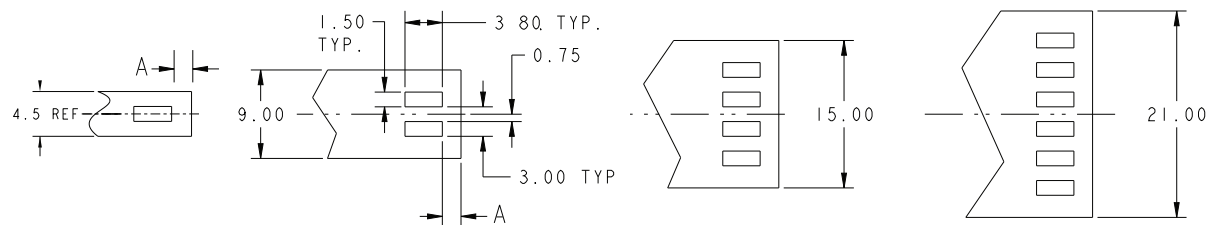
Horizontal mating and unmating only  
with 0.2 mm gap between PCBs



Horizontal and vertical mating and unmating  
with 2.4 mm gap between PCBs



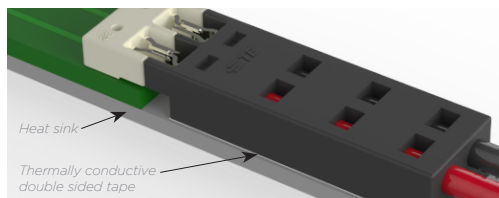
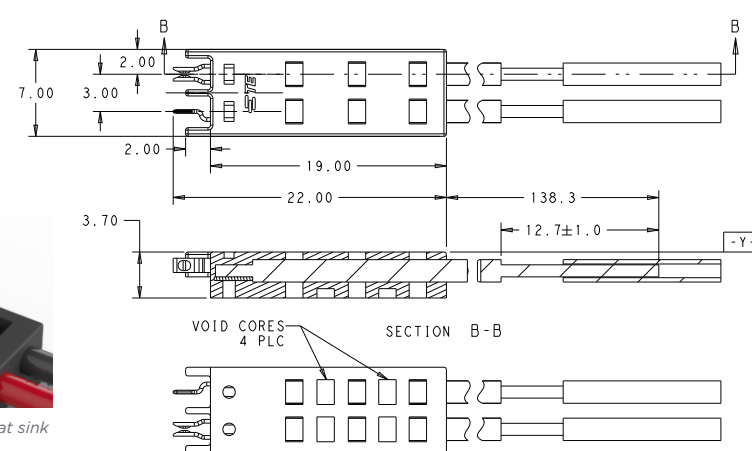
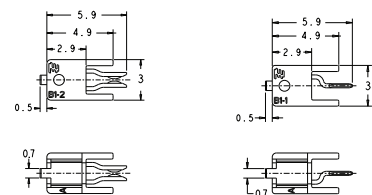
6P	19.30	32.00	1971567-3
4P	13.30	24.00	1971567-2
2P	7.30	16.00	1971567-1
POSITION	DIM.C	DIM.B	FOR P/N



1 position receptacle

1 position blade

2 position mini hermaphroditic wire to board lead assembly



2 position wire to board lead assembly is secured to heat sink with thermally conductive double sided tape

Dimensions are shown in millimeters for reference purposes only. Specifications subject to change. Customer drawing should be used for all design activity.