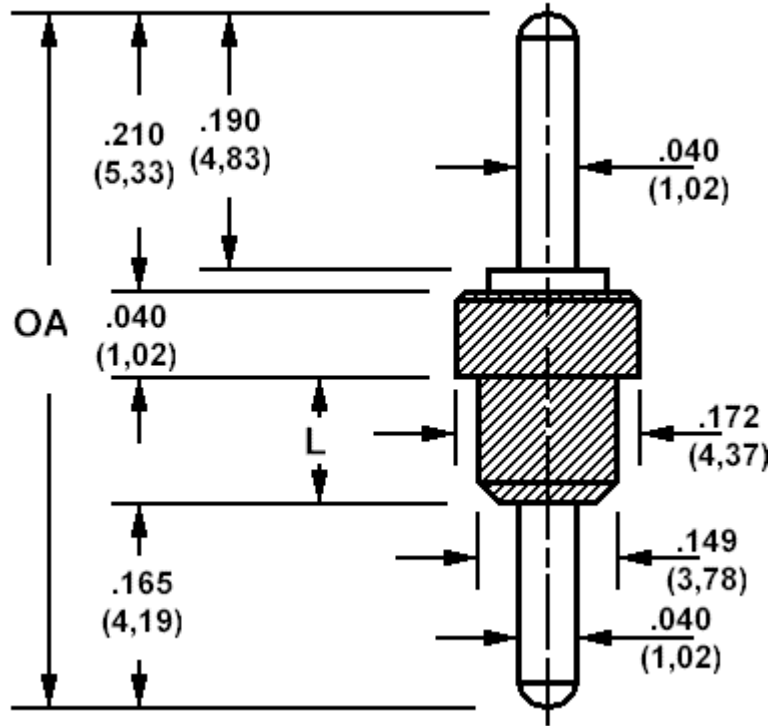


571-4176 Insulated solder terminal, Feed thru

Recommended mounting hole .136 (3,45)



How to order code 571-4176-XX-YY-19

Basic Part No (XX = Panel thickness, YY = plating finish. See tables for options)

Basic Part No.		OA (ref)	L	Panel Thickness (XX)
571-4176	-01	.515 (13,08)	.100 (2,54)	.031 (0,79) to .062 (1,59)
	-02	.540 (13,72)	.125 (3,18)	.031 (0,79) to .085 (2,16)
	-03	.580 (14,73)	.165 (4,19)	.031 (0,79) to .125 (3,18)
	-04	.665 (16,89)	.250 (6,35)	.031 (0,79) to .210 (5,33)

Component	Material	Finish (YY)	
		-01	-05
Terminal	Brass	Silver	Electro Solder
Insulator	Teflon - white		

Additional Specifications	Panel thickness			
	-01	-02	-03	-04
Flashover VRMS at Sea Level	3000	3000	3000	3000
Capacitance (pF)	0.4	0.4	0.4	0.4

Teflon is a registered trademark of Dupont