

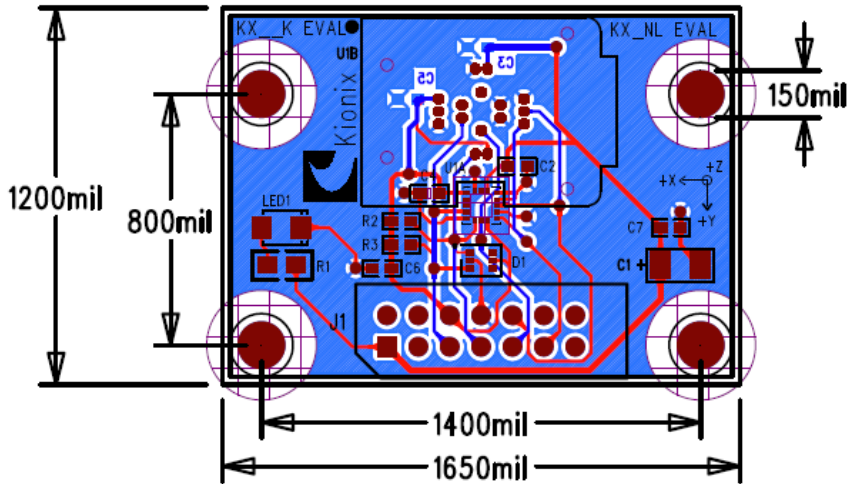
KXCJK Evaluation Board



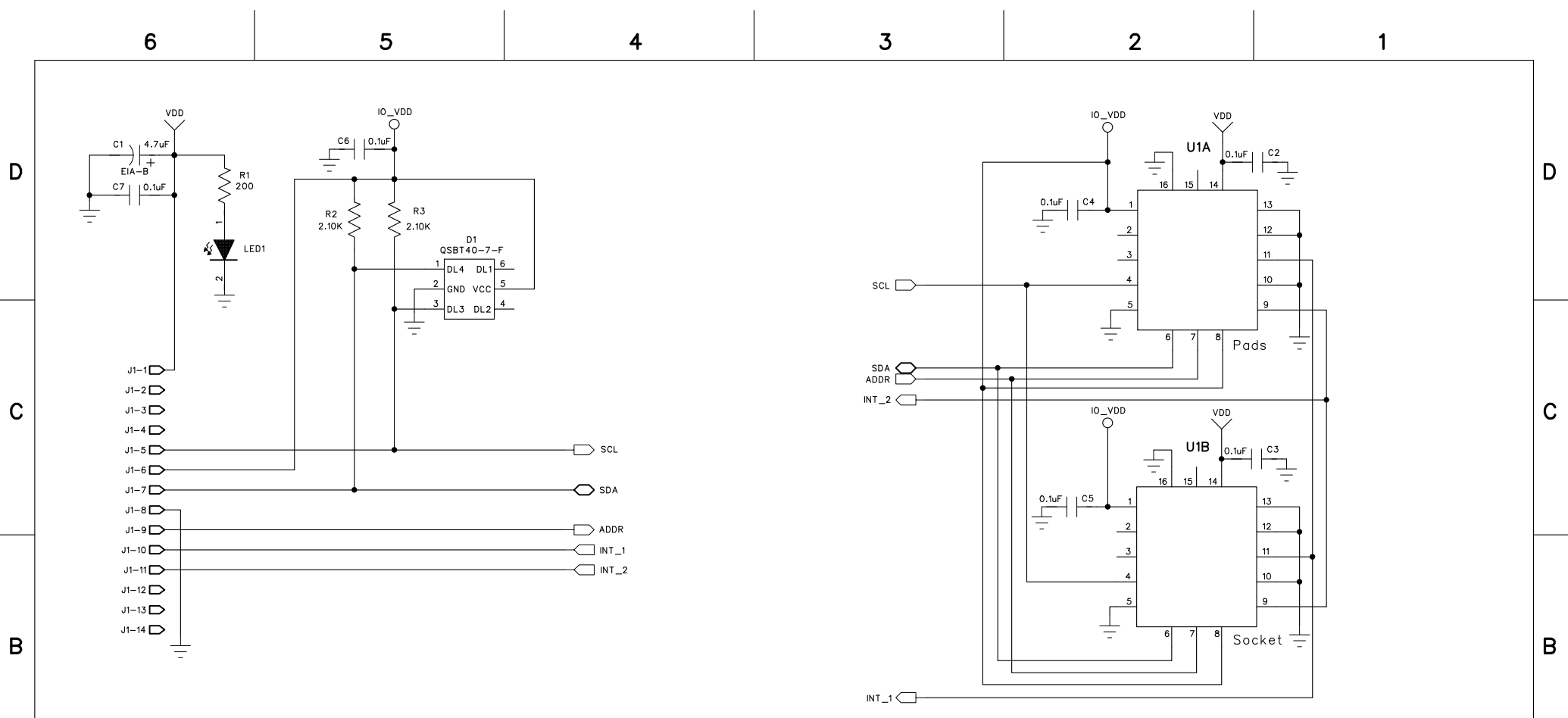
Part Number: EVAL-KXCJK-1013

- Range: 2g, 4g, 8g, User-selectable
- Sensitivity: 1024 (14-bit), 64, 32, 16 (8-bit), 1024, 512, 256 (12-bit), (counts/g)
- Temperature (°C): -40 to +85

PLEASE SEE THE FOLLOWING PAGES FOR THE BOARD LAYOUT AND SCHEMATIC



J1 Connector Pin Description	
pin 1	VDD
pin 2	DNC
pin 3	DNC
pin 4	DNC
pin 5	SCL
pin 6	IOVDD
pin 7	SDA
pin 8	GND
pin 9	ADDR
pin 10	INT
pin 11	DNC
pin 12	DNC
pin 13	DNC
pin 14	DNC



NOTES:

- 1) All resistors are 1%, 1/10W, 0603 unless otherwise specified.
- 2) All capacitors are 0.1uF, 10%, 16V, 0603 unless otherwise specified.
- 3) U1 LGA: Populate C2 and C4.
U2 Socket: Populate C3 and C5; mounted on solder copper side.
- 4) U2 socket: Loranger, 03742 171 6218B.
- 5) Supported devices: KX_IK, KX_KK, KX_NL

COMPANY: Kionix Inc.			
TITLE: KX__K/KX_NL Evaluation Board			
DRAWN: Bob Ross	DATED: 4/20/12	CODE: DWG794	SIZE: B
CHECKED:	DATED:	DRAWING NO: KAMMDM001R55	REV: 0
QUALITY CONTROL:	DATED:	SCALE: NONE	
RELEASED:	DATED:	SHEET: 1 OF 2	

A

A

6

5

4

3

2

1

REVISION RECORD

DATE:	DRAWN BY:	DESCRIPTION:	CHECKED BY:	DATE:
4/20/12	Bob Ross	Initial release.		

D

D

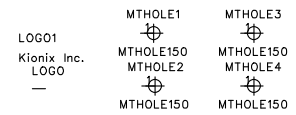
C

C

B

B

A



COMPANY: **Kionix Inc.**

TITLE: **KX__K/KX_NL Evaluation Board**

DRAWN: Bob Ross	DATED: 4/20/12
CHECKED:	DATED:
QUALITY CONTROL:	DATED:
RELEASED:	DATED:

CODE:	SIZE:	DRAWING NO:	REV:
DWG794	B	KAMMDM001R55	0
SCALE: NONE			SHEET: 2 OF 2