

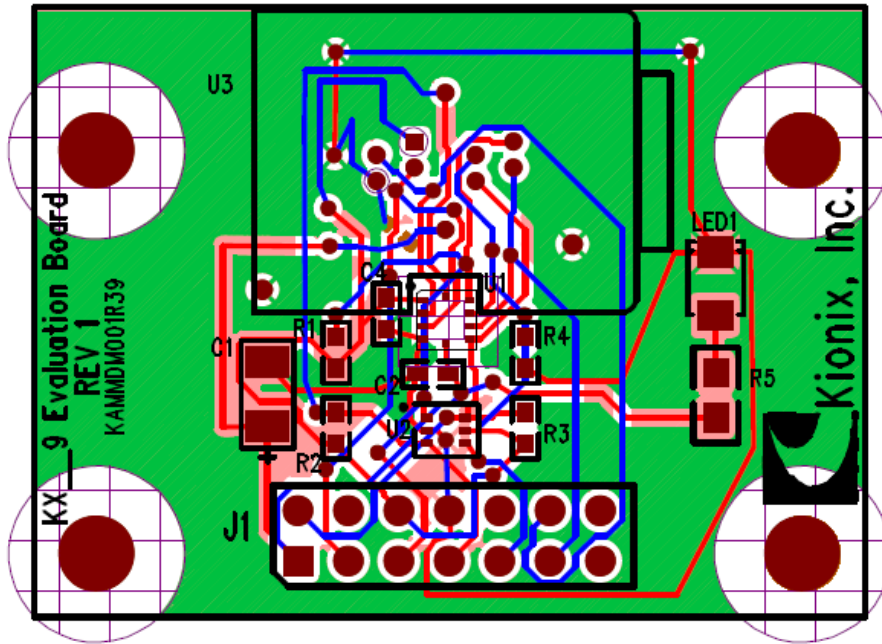
KXCJ9-1008 Evaluation Board



Part Number: EVAL-KXCJ9-1008

- Range: 2g, 4g, 8g, User-selectable
- Sensitivity: 1024 (14-bit), 64, 32, 16 (8-bit), 1024, 512, 256 (12-bit), (counts/g)
- Temperature (°C): -40 to +85

PLEASE SEE THE FOLLOWING PAGES FOR THE BOARD LAYOUT AND SCHEMATIC



Outer Dimensions: 3.0cm x 4.0cm

J1 Connector Pin Description	
pin 1	VDD
pin 2	GND
pin 3	DNC
pin 4	DNC
pin 5	SCL
pin 6	IO_VDD
pin 7	SDA
pin 8	GND
pin 9	ADDR
pin 10	DNC
pin 11	INT
pin 12	DNC
pin 13	DNC
pin 14	DNC

6

5

4

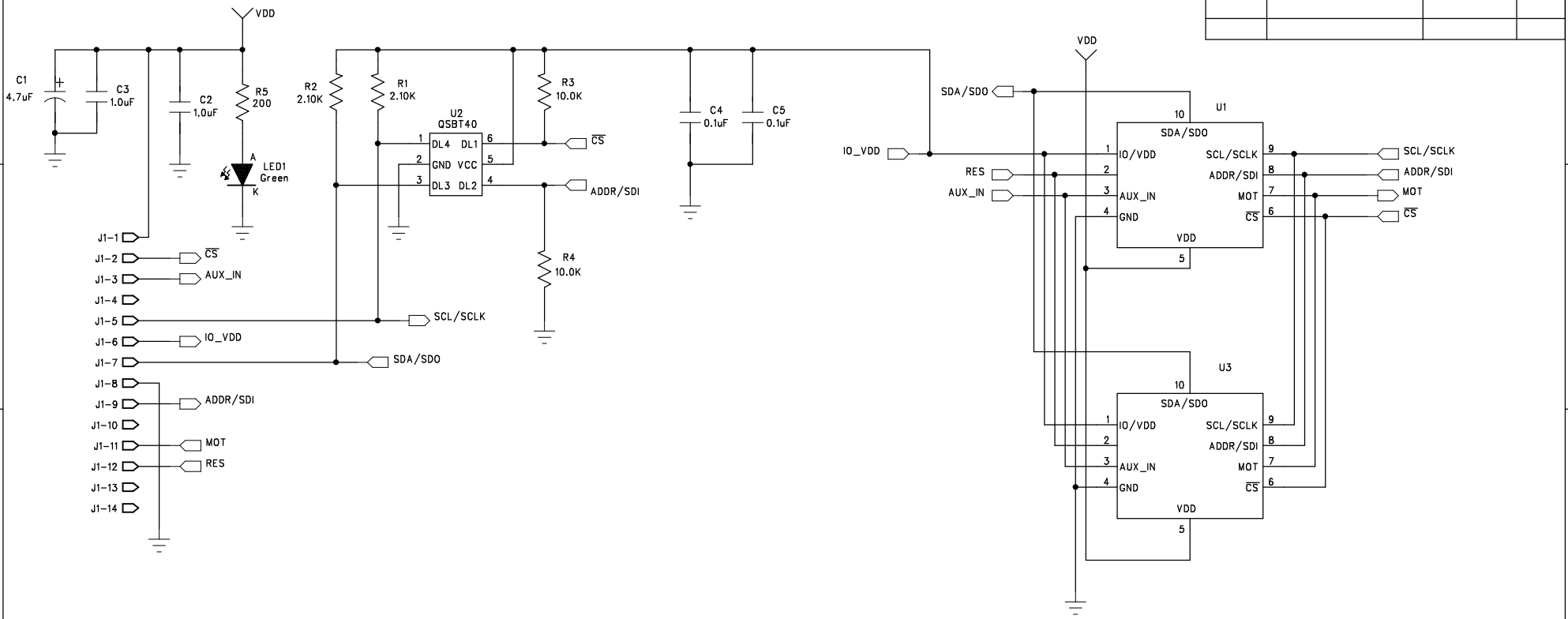
3

2

1

NOTE: Use C2 & C4 for soldered part.
Use C3 & C5 for socket.

REVISION RECORD			
LTR	ECO NO:	APPROVED:	DATE:



COMPANY: Kionix, Inc.

TITLE: KX__9 Evaluation Board Rev 1

DRAWN: Bob Ross	DATED: 6/16/09
CHECKED:	DATED:
QUALITY CONTROL:	DATED:
RELEASED:	DATED:

CODE:	SIZE: B	DRAWING NO: KAMMDM001R39	REV: 1
SCALE:			SHEET: 1 OF 1

D

C

B

A

D

C

B

A