

# rotronic

Datenblatt - Fiche technique - Data sheet

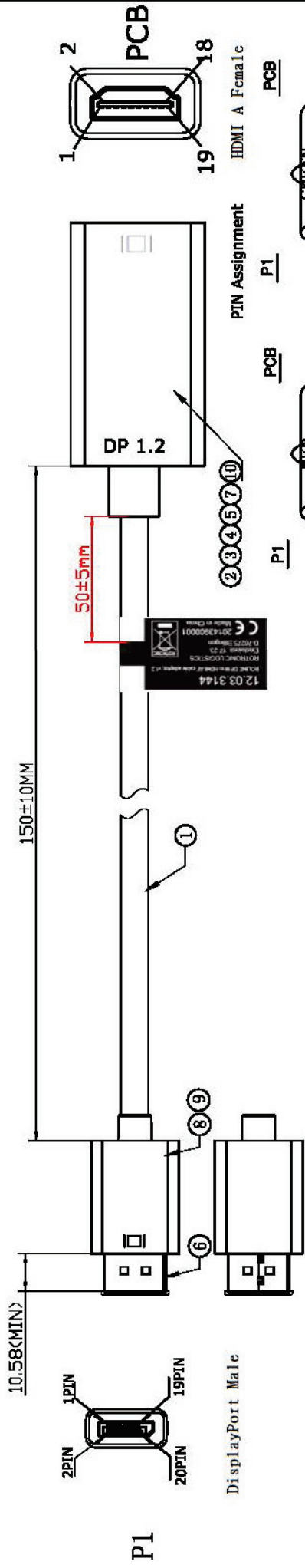
12.03.3144



**ROLINE DisplayPort-HDMI Adapter, v1.2,  
DP Stecker-HDMI Buchse,**

**ROLINE Adaptateur DisplayPort – HDMI, v1.2,  
DP M-HDMI F,**

**ROLINE DisplayPort-HDMI Adapter, v1.2,  
DP M – HDMI F,**



DisplayPort Male

HDMI A Female

PCB

PCB

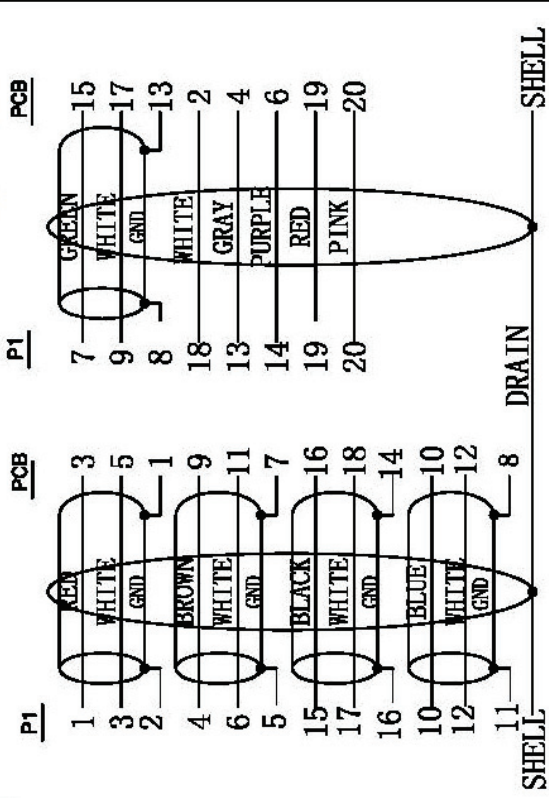
PCB

PCB

PCB

PCB

PCB



P1

PCB

P1

PCB

P1

PCB

P1

PCB

P1

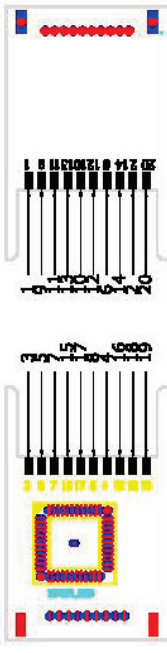
PCB

P1

PCB

P1

PCB



ELECTRICAL TEST:

1. 100% OPEN SHORT & MIS WIRE TEST
2. CONTACT RESISTANCE: 2 OHM (MAX.)
3. INSULATION RESISTANCE: 10M OHM (MIN.)
4. HI-POT TEST: DC 300V/10ms

NO	DESCRIPTION	QTY	UNIT
10	W=20MM 25u DOUBLE CONDUCTIVE COPPER FOIL	0.02	m
9	DP M (DP M/HDMI A F PCB) ABS One-piece SHELL WHITE PRINT: □ (PT:COOL GRAY 8C W:5.0MM)	1	pcs
8	DP M (DP M/HDMI A F PCB) ABS WHITE	1	pcs
7	φ 0.8 heat shrinkable TUBE 6mm*5pcs	0.03	m
6	DisplayPort M TRANSPARENT COLOR PVC DUST COVER	1	pcs
5	HDMI A F ABS One-piece SHELL Apple SNOWY WHITE	1	pcs
4	HDMI A F ABS One-piece WHITE PRINT: DP 1.2 (neutral)	1	pcs
3	65P SNOWY WHITE PVC	9	g
2	empty PCB + SMT + PLATED: NICKEL	1	pcs
1	DP M TO M SNOWY WHITE PLATED: NICKEL 34AWG AL 0.4M 5 Pair twist	1/2	pcs
NC	DESCRIPTION	QTY	UNIT

TOLERANCE		M/M	
INCHES	M/M	INCHES	M/M
.X	.015	.30	
.XX	.010	.10	
.XXX	.005	.05	

DRAWN BY		zhou	
CHECK BY			
APPD BY			
SCALE	NONE	Item No.:	12.03.3144
UNIT	MM	DRAWING NO.:	
DATE	2014.02.27	REV.	A
			1/3

**rotronic**

ROLINE Cable Adapter, DP M to HDMI A F  
white color, v1.2