

rotronic

Datenblatt - Fiche technique - Data sheet

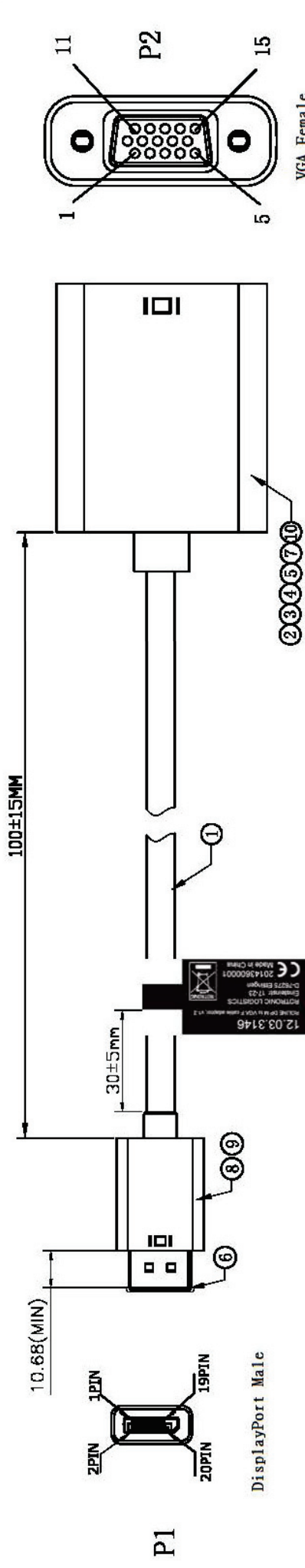
12.03.3146



**ROLINE DisplayPort-VGA Adapter, v1.2,
DP ST – VGA BU,**

**ROLINE Adaptateur DisplayPort-VGA, v1.2,
DP M – VGA F,**

**ROLINE DisplayPort-VGA Adapter, v1.2,
DP M – VGA F,**

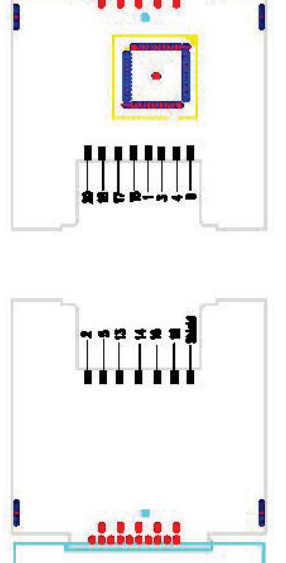


PIN Assignment

P1	PCB
1	WHITE
2	BLACK
3	GRD
4	WHITE
5	BROWN
6	GRD
15	WHITE
16	RED
17	GRD
18	WHITE
19	GRAY
20	PURPLE
	RED
	RED
	PINK
	SHELL

12.03.3146
ROTRONIC DP to VGA F cable adapter, v1.2
ROTRONIC LOGISTICS
Emmentalerstr. 17-23
D-70275 Ettlingen
Made in China

20123100001
production year Product code serial number



ELECTRICAL TEST:

- 100% OPEN SHORT & MIS WIRE TEST
- CONTACT RESISTANCE: 2 OHM (MAX.)
- INSULATION RESISTANCE: 10M OHM (MIN.)
- HI-POT TEST: DC 300V/10ms

NO	DESCRIPTION	Q'TY	UNIT	PCS	PCS
10	#4-40UNC H4.75*8.6MM PLATED:NICKEL NUT (NUT H=4.8MM)	2	pcs		
9	DP M(DP M/VGA F PCB) ABS One-piece SHELL WHITE PRINT: □ (PT:COOL GRAY 8C W:5.0MM)	1	pcs		
8	DP M(DP M/VGA F PCB) ABS One-piece SHELL WHITE	1	pcs		
7	φ 0.8 heat shrinkable TUBE BLACK 6mm*3pcs	0.018	m		
6	DisplayPort M TRANSPARENT COLOR PVC DUST COVER	1	pcs		
5	VGA F(DP M/VGA F PCB) ABS One-piece SHELL WHITE	1	pcs		
4	VGA F ABS One-piece SHELL Apple SNOWY WHITE PRINT: □ (PT:COOL GRAY 8C W:5.0MM)	1	pcs		
3	65P SNOWY WHITE PVC	4	g		
2	empty PCB + SMT + PLATED: NICKEL	1	pcs		
1	DP M TO M SNOWY WHITE PLATED: NICKEL 34AWG AL 0.3M 3 Pair Twist	1/2	pcs		
NO	DESCRIPTION	Q'TY	UNIT	PCS	PCS

rotronic		TOLERANCE	
		INCHES	M/M
	.X	.015	.30
	.XX	.010	.10
	.XXX	.005	.05
DRAWN BY		zheng	
CHECK BY			
APPD BY			
Item No.:		12.03.3146	
SCALE	NONE	DRAWING NO.:	
UNIT	MM	REV. G	
DATE	2013.03.16	1/2	

ROLINE Cable Adapter, DP M to VGA F
white color, v1.2