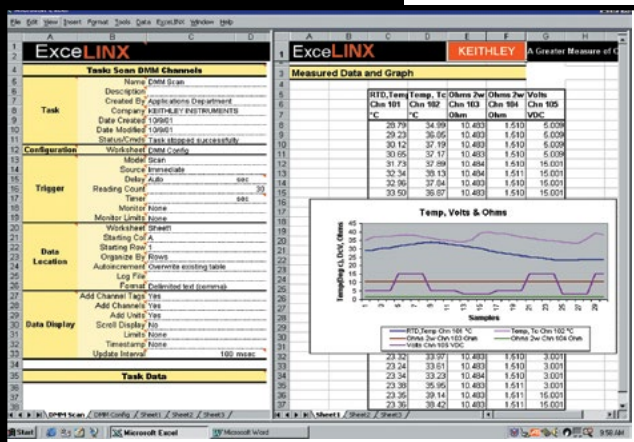


ExcelINX™ -1A

Excel Add-In

For the Integra Series (Models 2700, 2701, and 2750)



ExcelINX-1A

- Stream data directly into Excel spreadsheets
- No programming required
- Get data with only a few mouse clicks
- Temperature, voltage, current, and resistance measurement capabilities
- Different functions can be supported on each channel
- Scaling, filtering, and limit capabilities
- GPIB, Ethernet, and RS-232 compatible
- Online help

ExcelINX-1A is an easy to use add-in utility for Microsoft® Excel and Keithley's Integra Series Multimeter/Switch Systems. Within minutes of installing ExcelINX on a PC, users can stream data directly from the Model 2700/2701/2750 into Excel. Data can be analyzed as it is received in Excel with Excel's graphics, charting, and mathematical capabilities, so a user can closely monitor the application in progress.

No programming is required to use ExcelINX-1A. A few mouse clicks are all it takes to configure channels, set parameters, select a trigger source, define scan lists, etc. Pop-up menus are used to set values and to determine whether data should move from the Model 2700/2701/2750 to Excel in real time during a scan or after the scan has completed.

ExcelINX-1A also supports many communication interfaces, including GPIB boards from Keithley, CEC, National Instruments, and INES.

Easy to Use

With ExcelINX-1A, no programming is required. To use it, simply perform the following steps.

1. Select the task (such as DMM scan) from a pop-up menu. A template will display.
2. Either use the template's default values (such as how many samples and which channels) or enter values.
3. Select the Integra system from the pop-up menu of installed systems.
4. Press Go on the ExcelINX-1A toolbar.

As soon as ExcelINX-1A receives data, it immediately sends the data directly to the Excel spreadsheet.

At the same time that ExcelINX-1A is acquiring data and sending it to the Excel spreadsheet, Excel is processing the data. For example, Excel could be performing calculations and displaying the results on a graph as it receives the data. The user can see the graph being updated while data is being collected.

Because ExcelINX-1A is an Excel add-in, it does not have the limitations that a separate package has. For example, many of these packages use DDE or OLE to send data to Excel, but DDE and OLE can only send limited amounts of data and can be cumbersome to use.

Firmware and Card Requirements

- Model 2700 (Firmware B03 or newer version), Model 2701, or Model 2750 (Firmware A02 or a newer version)
- Supports Integra Series 77xx plug-in/control modules and their common functions
 - Model 7700 20-channel, Differential Multiplexer Module with Automatic CJC and Screw Terminals
 - Model 7701 32-channel Differential Multiplexer Module
 - Model 7702 40-channel Differential Multiplexer Module with Screw Terminals
 - Model 7703 32-channel, High-Speed, Differential Multiplexer Module
 - Model 7705 40-channel Single-pole Control Module
 - Model 7707 32-channel Digital I/O Module with 10-channel Differential Multiplexer
 - Model 7708 40-channel Differential Multiplexer Module with Automatic CJC and Screw Terminals
 - Model 7709 68 Matrix Module
 - Model 7710 20-channel Solid-state Differential Multiplexer with Automatic CJC
 - Model 7711 2GHz 50 RF Module
 - Model 7712 3.5GHz 50 RF Module

1.888.KEITHLEY (U.S. only)

www.keithley.com

KEITHLEY

A Greater Measure of Confidence

A Tektronix Company

Streams data directly to Excel

DIGITAL MULTIMETERS & SYSTEMS