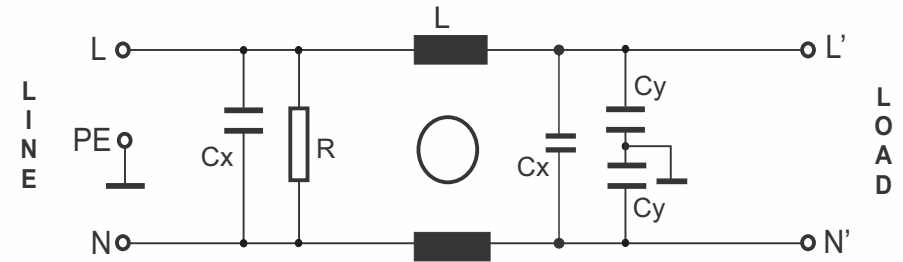


RES20F03**Rev. 0****CIRCUIT DIAGRAM:****CHARACTERISTICS:**

Rated Voltage:	250VAC max
Rated Current at Ambient:	3A @ 40°C
Operating Frequency:	DC-400HZ
Climatic Class (IEC60068-1):	25/100/21
Temperature Range:	-25°C to +100°C
Over load Current:	1.5 x Rated Ct. for 1 Min
Operational Leakage current : (at 230VAC/50Hz and Total C +/-20%)	0.74 mA max

Worst case Leakage current : (N interrupted and Total C +/-20%)	<1.11 mA max
---	--------------

DCR @ 25°C (+/-25%) :	100 mΩ
Test Voltage (100%) for 2 sec:-	L-N: 1100VDC
	L-GND: 3000VDC

Ingress Protection:	IP 20
Weight (Approximate):	70 gr

FILTER PARAMETERS:

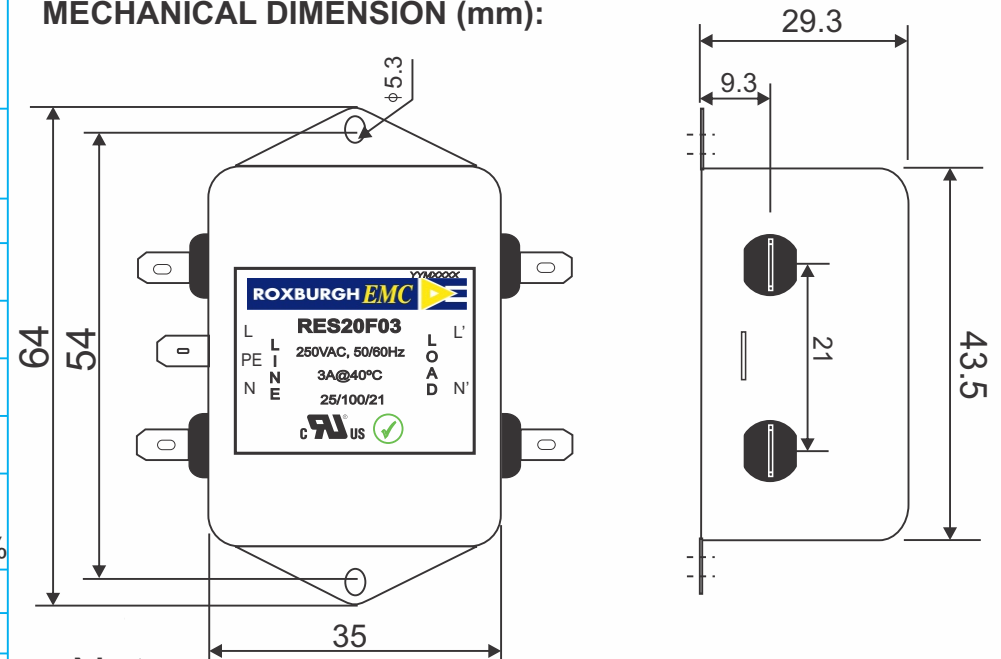
Total Inductance (L-L'+N-N') @10KHz:	2.5mH +50%,-30%
Total Capacitance (L-L/L-N) @1KHz:	0.3μF +/- -20%
Total Capacitance (L/N-GND) @1KHz:	9.4nF +/- -20%
Total Resistance (L-L/L-N):	1M Ω +/- -10%
Total Resistance (L/N-GND):	

APPROVALS:

REACH
RoHS
UL



APPROVED
BY
AJAY
Date: 28-03-2014

MECHANICAL DIMENSION (mm):**Note:**

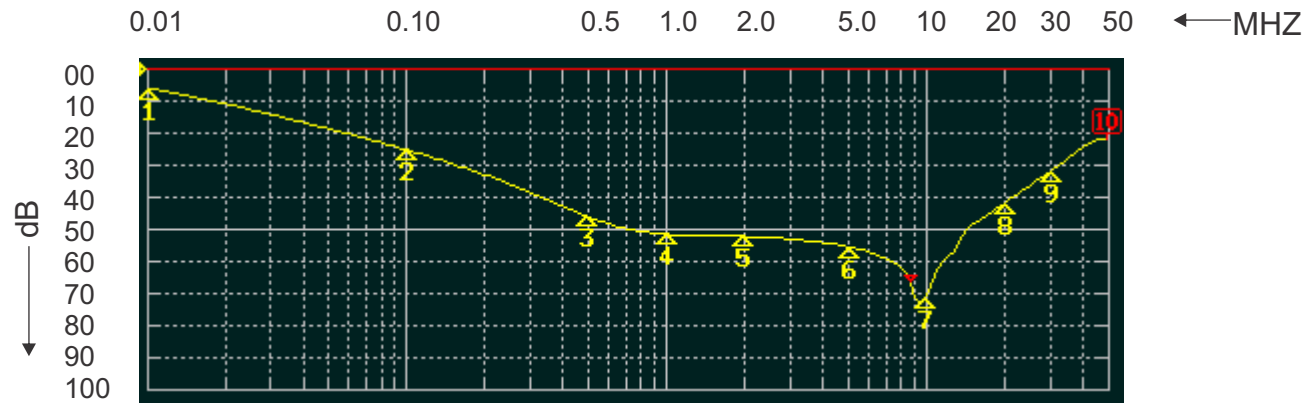
Housing matl. Fe with Ni Plated
Fast-On Terminal (6.3 x 0.8mm)
and wire (20 AWG) Connections

TOLERANCE: +/-1.0 mm

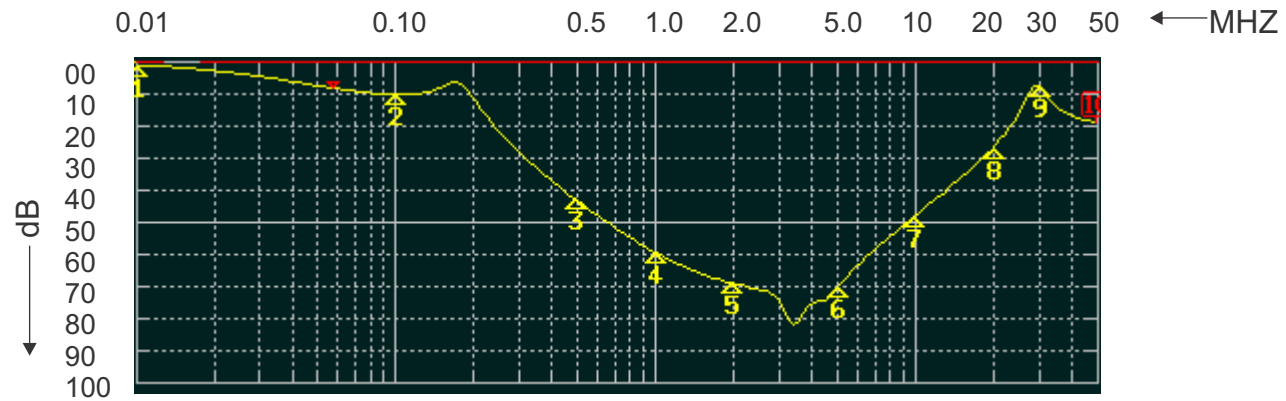


ROXBURGH EMC
FILTER INSERTION LOSS CHARACTERISTICS
CISPR 17 - 50 OHM METHOD

RES20F03



COMMON MODE



DIFFERENTIAL MODE

