

RES30F01

Rev. 0

**CHARACTERISTICS:**

Rated Voltage:	250VAC max
Rated Current at Ambient:	1A @ 40°C
Operating Frequency:	DC-60HZ
Climatic Class (IEC60068-1):	25/100/21
Temperature Range:	-25°C to +100°C
Over load Current:	1.5 x Rated Ct. for 1 Min

Operational Leakage current : ( at 230VAC and Total C +/-20%) 0.34 mA max

Worst case Leakage current : ( N interrupted and Total C +/-20%) <0.68 mA max

DCR @ 25°C (+/-25%) : 325 mΩ

Test Voltage (100%) for 2 sec:-	P-P:	1500VDC
	P-GND:	3000VDC

Ingress Protection: IP 20

Weight (Approximate): 60 gr

**FILTER PARAMETERS:**

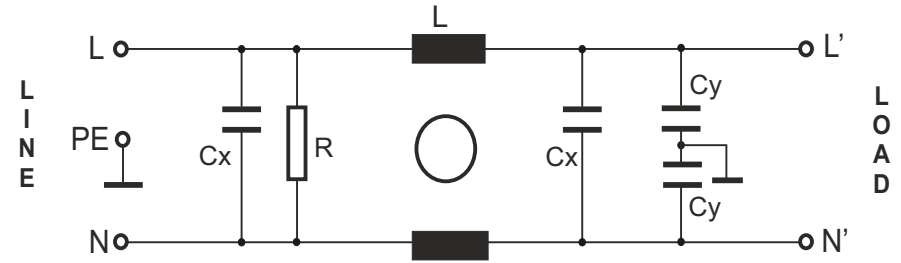
Total Inductance (P-P'+N-N') @10KHz:	20mH +50%,-30%
Total Capacitance (P-P/P-N) @1KHz:	0.44μF +/- -20%
Total Capacitance (P/N-GND) @1KHz:	4.4nF +/- -20%
Total Resistance (P-P/P-N):	1M Ω +/- -10%
Total Resistance (P/N-GND):	

**APPROVALS:** REACH  
RoHS  
UL

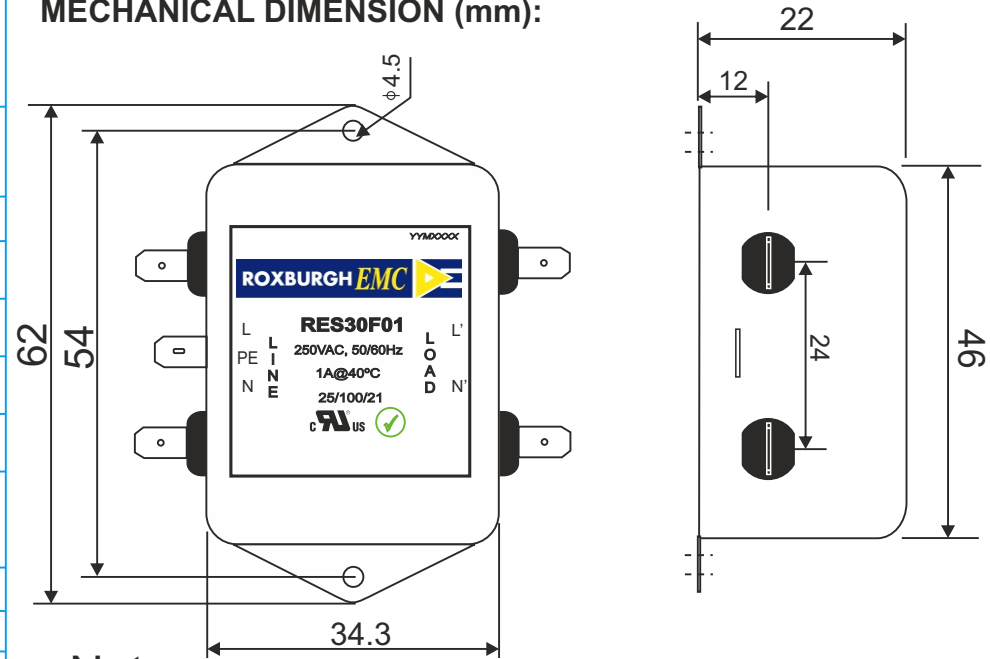


APPROVED BY AJAY  
Date:25-04-2014

**CIRCUIT DIAGRAM:**



**MECHANICAL DIMENSION (mm):**



**Note:**

Housing matl. Fe with Ni Plated  
Fast-On Terminal ( 6.38 x 0.8mm)  
Connections

TOLERANCE: +/-1.0 mm

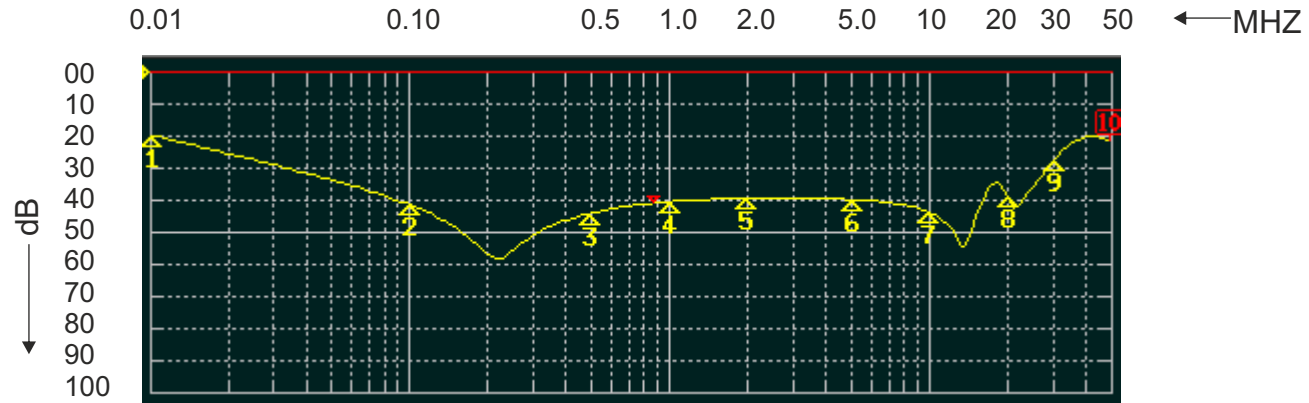


Tel:- +44(0) 1724 273200  
email:- sales@dem-uk.com  
web :- www.dem-uk.com/roxburgh

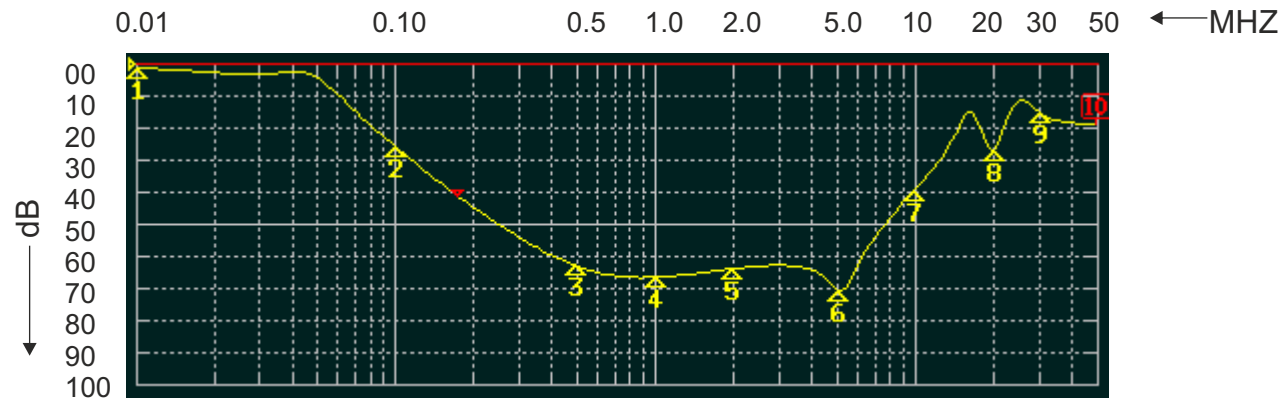
# ROXBURGH EMC

## FILTER INSERTION LOSS CHARACTERISTICS CISPR 17 - 50 OHM METHOD

### RES30F01



COMMON MODE



DIFFERENTIAL MODE

