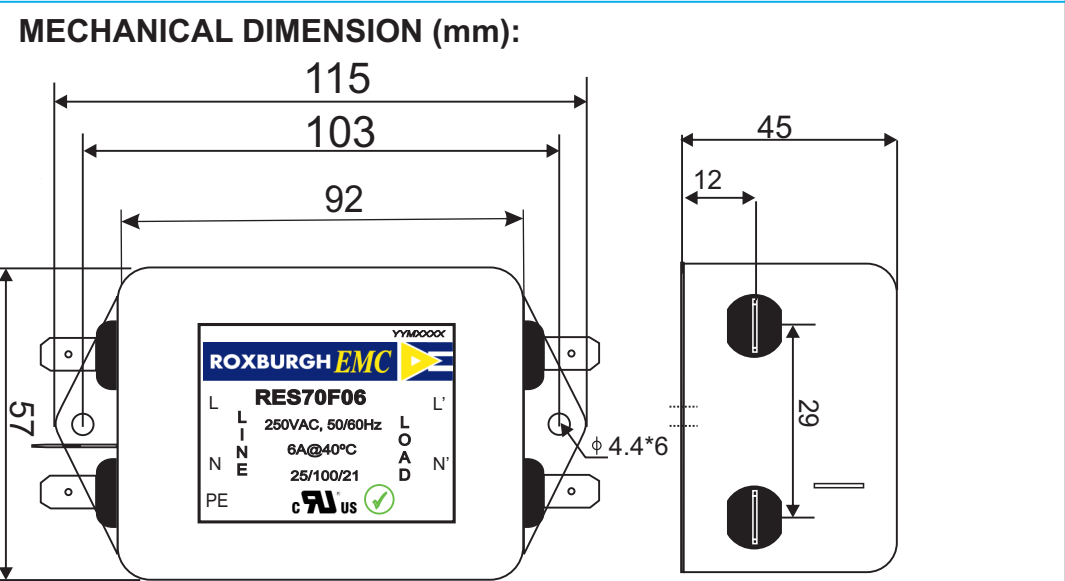
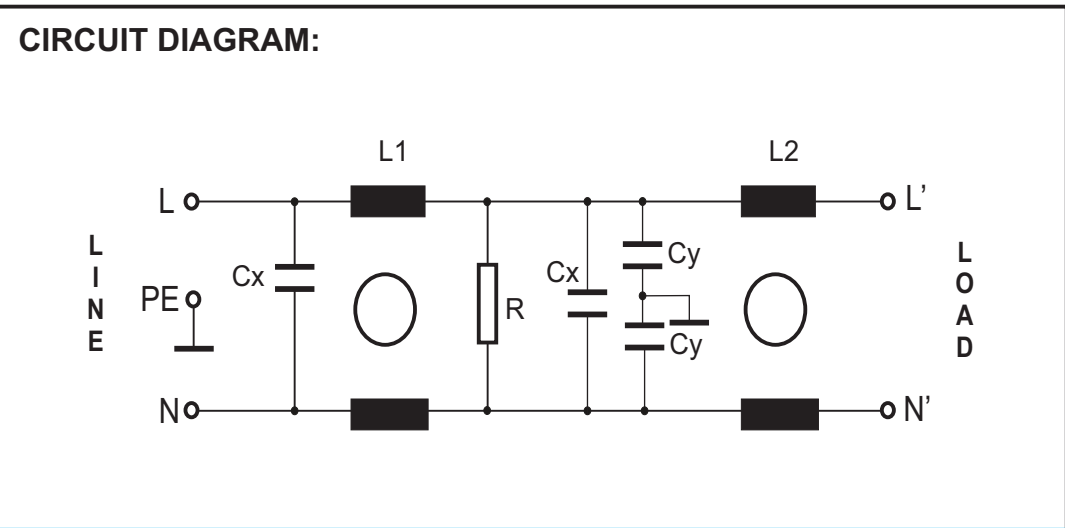


<b>RES70F06</b>		<b>Rev. 0</b>
<b>CHARACTERISTICS:</b>		
Rated Voltage:	250VAC max	
Rated Current at Ambient:	6A @ 40°C	
Operating Frequency:	DC-400HZ	
Climatic Class (IEC60068-1):	25/100/21	
Temperature Range:	-25°C to +100°C	
Over load Current:	1.5 x Rated Ct. for 1 Min	
Operational Leakage current : (at 230VAC/50Hz and Total C +/-20%)	0.734 mA max	
Worst case Leakage current : ( N interrupted and Total C +/-20%)	<1.101 mA max	
DCR @ 25°C (+/-25%) :	200 mΩ	
Test Voltage (100%) for 2 sec:-	L-N:	1100VDC
	L-GND:	3000VDC
Ingress Protection:	IP 20	
Weight (Approximate):	450 gr	
<b>FILTER PARAMETERS:</b>		
Total Inductance (L-L'+N-N') @10KHz:	15.6mH +50%,-30%	
Total Capacitance (L-L/L-N) @1KHz:	2μF +/- 20%	
Total Capacitance (L-L/L-N) @1KHz:	9.4nF +/- 20%	
Total Resistance (L-L/L-N):	0.22MΩ +/- 10%	
Total Resistance (L/N-GND):		
<b>APPROVALS:</b>	REACH RoHS UL	APPROVED BY AJAY Date: 19-03-2014



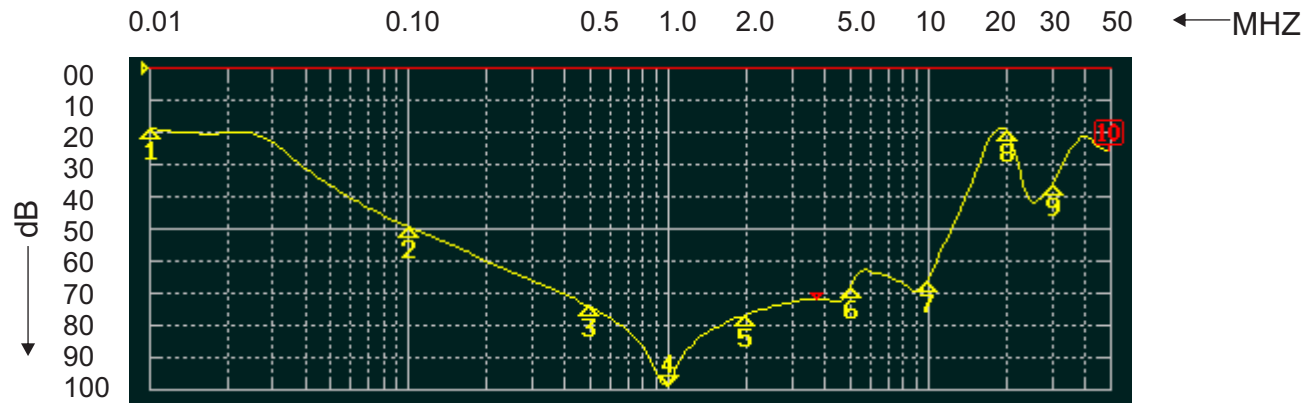
**Note:**  
Housing matl. Fe with Ni Plated  
Fast-On Terminal ( 6.3 x 0.8mm)  
Connections

TOLERANCE: +/-1.0 mm

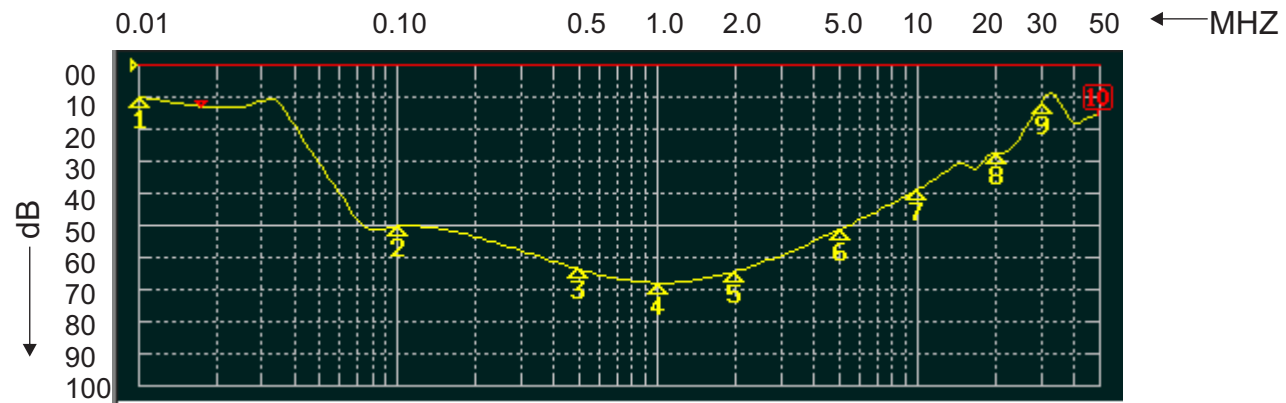


**ROXBURGH EMC**  
FILTER INSERTION LOSS CHARACTERISTICS  
CISPR 17 - 50 OHM METHOD

**RES70F06**



COMMON MODE



DIFFERENTIAL MODE

