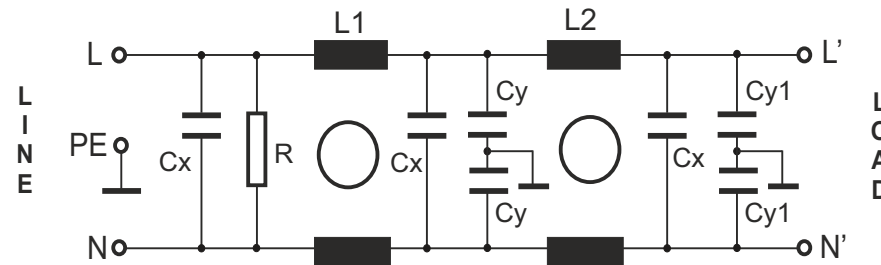
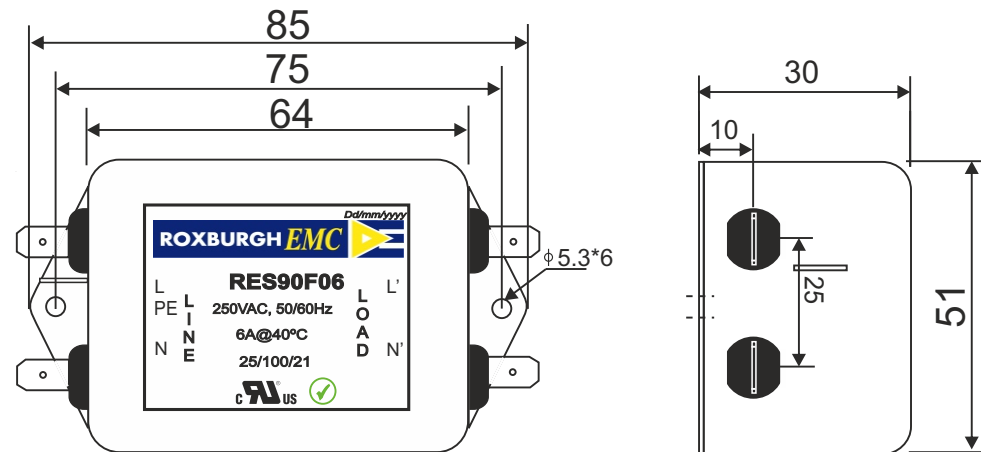


RES90F06	Rev. 0
CHARACTERISTICS:	
Rated Voltage:	250VAC max
Rated Current at Ambient:	6A @ 40°C
Operating Frequency:	DC-60HZ
Climatic Class (IEC60068-1):	25/100/21
Temperature Range:	-25°C to +100°C
Over load Current:	1.5 x Rated Ct. for 1 Min
Operational Leakage current : (at 230VAC and Total C +/-20%)	0.67 mA max
Worst case Leakage current : (N interrupted and Total C +/-20%)	<1.34 mA max
DCR @ 25°C (+/-25%) :	100 mΩ
Test Voltage (100%) for 2 sec:-	P-P: 1100VDC
	P-GND: 3000VDC
Ingress Protection:	IP 20
Weight (approximate):	200 gr
FILTER PARAMETERS:	
Total Inductance (P-P'+N-N') @10KHz:	16mH +50%,-30%
Total Capacitance (P-P/P-N) @1KHz:	1.41μF +/- -20%
Total Capacitance (P/N-GND) @1KHz:	8.6nF +/- -20%
Total Resistance (P-P/P-N):	330K Ω +/- -10%
Total Resistance (P/N-GND):	
APPROVALS: REACH RoHS UL	APPROVED BY AJAY DATE:28-03-2014

CIRCUIT DIAGRAM:



MECHANICAL DIMENSION (mm):



Note:

Housing matl. Fe with Ni Plated
Fast-On Terminal (6.38 x 0.8mm)
Connections

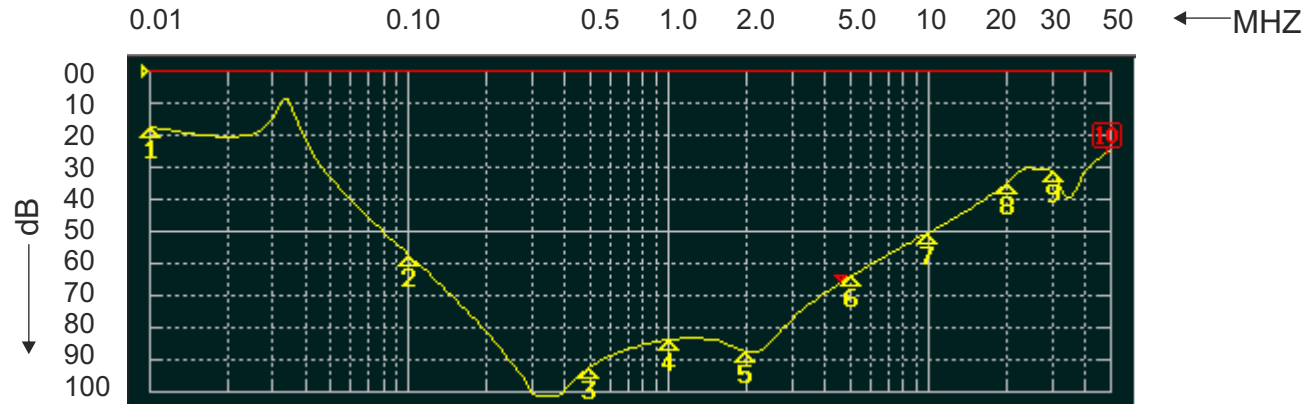
TOLERANCE: +/-1.0 mm



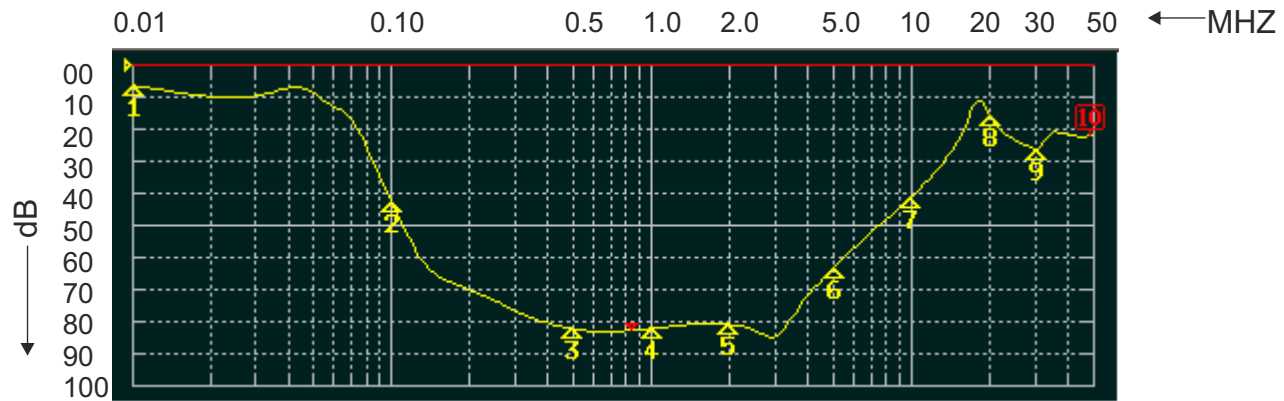
ROXBURGH EMC

FILTER INSERTION LOSS CHARACTERISTICS CISPR 17 - 50 OHM METHOD

RES90F06



COMMON MODE



DIFFERENTIAL MODE

