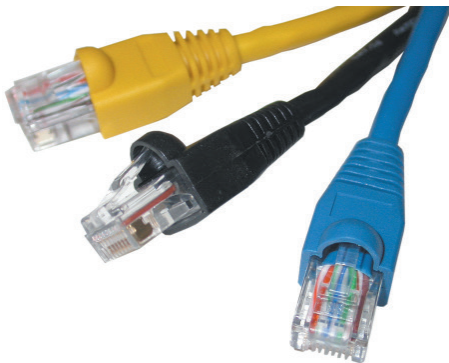


# Category 5E Enhanced Patch Cords



RoHS  
Compliant



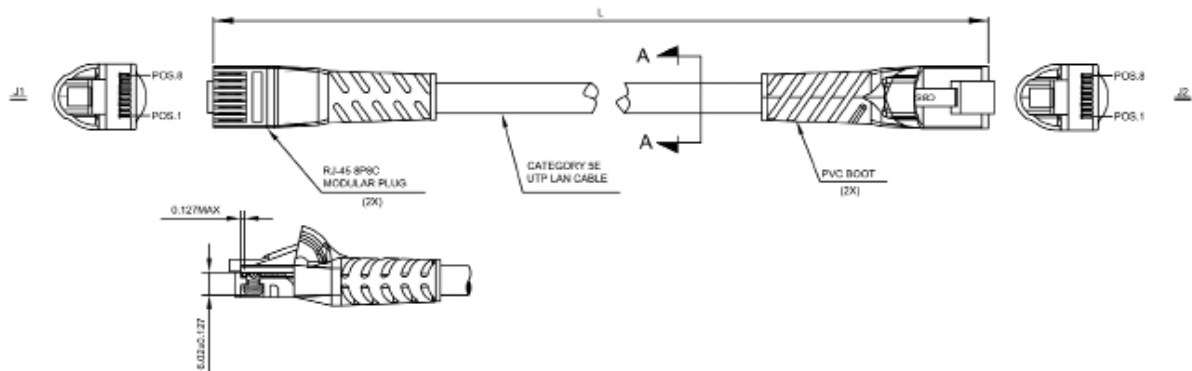
## Description

Snagless, Booted Category 5E Utp Patch Cords

Features snagless boots to prevent cable kinks and bent pins when removing from patch panels.

## Specifications:

- Booted (snagless) and nonbooted versions — in 8 lengths and 7 popular colors
- 8-position RJ-45 module plug at each end — 15µ" gold-plated copper alloy contacts
- Category 5e LAN cable — 4 unshielded twisted pairs (UTP), 24 AWG, PVC jacket
- Cable speeds up to 350MHz
- Verified to EIA/TIA-568-B.2



Dimensions : Millimetres

No.	Item	Q'ty.	Description
1	Enhance Category 5E UTP Lan Cable	1Pc	#24 × 4P+Jacket : PVC, O.D.: 5.2mm Frequency : 350MHz
2	RJ-45 8P8C Modular Plug	2 Set	Contact : Copper Alloy 15µ", Gold Plated Insulator : Polycarbonate Colour : Natural with "CBS" Marking
3	PVC Boot	2 Pcs	PVC, Shore A : 75 ±3
4	Conductor	1Pc	Constitution 24AWG (7/0.20mm) Material Stranded Bare Copper O.D. 0.61mm



# Category 5E Enhanced Patch Cords



Wire Connection Table			
8	Brown	Twisted Pair	8
7	White/Brown		7
5	White/Blue	Twisted Pair	5
4	Blue		4
6	Green	Twisted Pair	6
3	White/Green		3
2	Orange	Twisted Pair	2
1	White/Orange		1
J1	Wire Colour		J2

## Part Number Table

Description	Dimension (L)	Colour	Part Number
Cat. 5e Patch Cords, W / SR	304.8mm ±12.7 (1' ±0.5")	Black	SPC21956
		Blue	SPC21957
		Green	SPC21958
		White	SPC21959
	914.4mm ±25.4 (3' ±1")	Red	SPC21962
		Green	SPC21993
		Yellow	SPC21963
		White	SPC21901
		Black	SPC21960
		Blue	SPC21961
	1,524mm ±25.4 (5' ±1")	Black	SPC21900
		Blue	SPC21899
		Green	SPC21994
		Red	SPC21995
		Yellow	SPC21996
	2,133.6mm ±25.4 (7' ±1")	Green	SPC21966
		Red	SPC21967
		Black	SPC21964
		Yellow	SPC21968
		White	SPC21969

# Category 5E Enhanced Patch Cords



## Part Number Table

Description	Dimension (L)	Colour	Part Number
Cat. 5e Patch Cords, W / SR	3,048mm ±38.1 (10' ±1.5")	Black	SPC21970
		Blue	SPC21971
		Green	SPC21972
		Yellow	SPC21974
		White	SPC21975
		Red	SPC21973
	4,572mm ±38.1 (15' ±1.5")	Black	SPC21976
		Green	SPC21978
		Red	SPC21979
	7,620mm ±50.8 (25' ±2")	Black	SPC21982
		Blue	SPC21983
		Green	SPC21984
		Yellow	SPC21986
		White	SPC21987
		Red	SPC21985
	15,240mm ±101.6 (50' ±4")	Black	SPC21988
		Blue	SPC21989
		Green	SPC21990
		Yellow	SPC21991
		White	SPC21992

**Important Notice** : This data sheet and its contents (the "Information") belong to the members of the Premier Farnell group of companies (the "Group") or are licensed to it. No licence is granted for the use of it other than for information purposes in connection with the products to which it relates. No licence of any intellectual property rights is granted. The Information is subject to change without notice and replaces all data sheets previously supplied. The Information supplied is believed to be accurate but the Group assumes no responsibility for its accuracy or completeness, any error in or omission from it or for any use made of it. Users of this data sheet should check for themselves the Information and the suitability of the products for their purpose and not make any assumptions based on information included or omitted. Liability for loss or damage resulting from any reliance on the Information or use of it (including liability resulting from negligence or where the Group was aware of the possibility of such loss or damage arising) is excluded. This will not operate to limit or restrict the Group's liability for death or personal injury resulting from its negligence. Multicomp is the registered trademark of the Group. © Premier Farnell plc 2012.