

Radio interference suppression filter, single phase **HLE 110-230/30**



Advantages

For enhanced requirements
Single-stage filter concept
Efficient filter effect against line-bound interference emissions
Increase in the interference immunity of the connected consumer

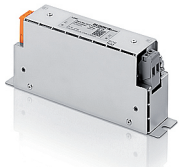
Applications

Radio interference suppression filter for line-side interference suppression of single devices, frequency converters or as group interference suppression.

Standards

Radio interference suppression filter to DIN EN 60939-2

Approvals



Radio interference suppression filter, single phase HLE 110-230/30

Electrical data

Type	HLE 110-230/30
Operating data	
Rated voltage	250 Vac
Voltage range	0 - 250 Vac
Rated current	30 A
Leakage current (50 Hz)*	8.50 mA
Rated frequency	50 - 60 Hz
Overrating Capacity	150 %, short-time
Standards	
Classification	EMI filter
Environment	
Climatic category	25/085/21 (in accordance with EN 60068-1)
Ambient temperature max.	50 °C
Safety and protection	
Type	Metal enclosure
Protection index	IP 20
Safety class (prepared)	I
Test voltage	1700 Vdc Phase/Phase, 2700 Vdc Phase/PE
Notes	
*	Leakage current measured against the maximum permissible input voltage fluctuation in accordance with IEC 38 ±10 %
Order numbers	
Order Number	HLE 110-230/30

Mechanical data

Type	HLE 110-230/30
Terminal and mounting	
Connections phase	Screw clamp, 10 mm ²
Connections PE	Bolt, M6
Fixing method	Mounting lugs
Fixing screws	M6
Measures and weights	
Weight	1.35 kg

