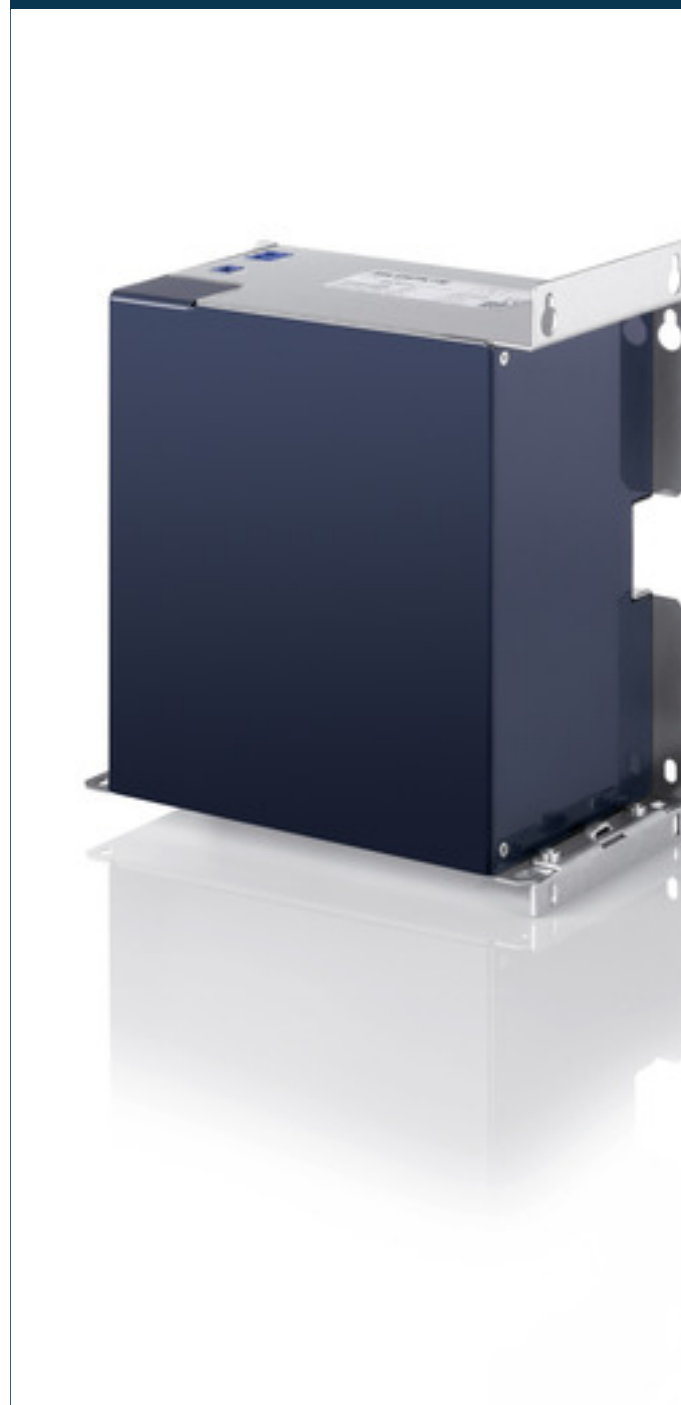


Battery module **PVA 24/3,2Ah**



Advantages

- Automatic detection of connected battery module
- Reliable early warning signal when battery life expectancy is declining
- Extended life expectancy through temperature controlled battery management
- Service-friendly spring-loaded connector system

Applications

Battery module for building a secure 24-Vdc power supply in case of power failure.

Approvals



UL 508 (E219022)



Battery module PVA 24/3,2Ah



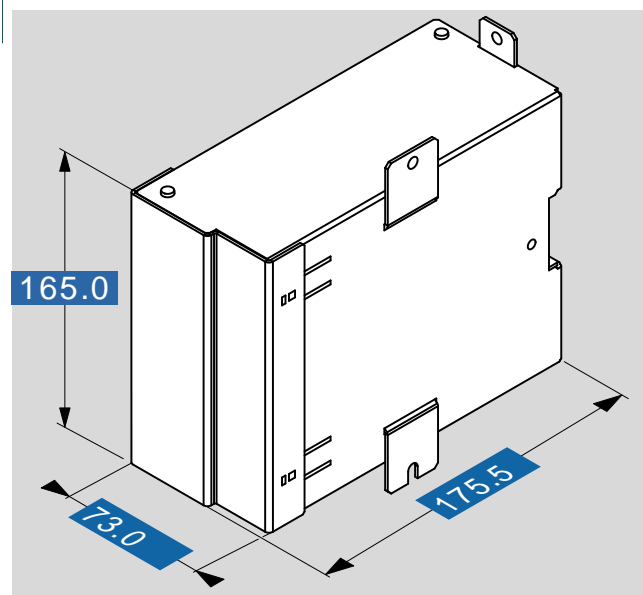
Electrical data

Type	PVA 24/3,2Ah
Input	
Input rated voltage	24 Vdc
Rated capacity	3.2 Ah
Output	
Output rated voltage	24 Vdc
Output rated current	max. 20.00 A
Internal fuse	25 A (slow-blow)
Parallel connection	Yes
Environment	
Ambient temperature	-10° C to +40° C
Storage temperature	-20° C to +40° C
Service life	5 years by +20° C
Latest commissioning (only accumulators)	6 months by +30° C to +40° C
Safety and protection	
Protection index	IP 20
Safety class	III, without PE connection
Order numbers	
Order Number	PVA 24/3,2Ah



Mechanical data

Type	PVA 24/3,2Ah
Terminal and mounting	
Connections input / output (spring clamp terminal, pluggable)	max. 2.5 mm ²
Connections temperature measurement, (spring clamp terminal, pluggable)	max. 2.5 mm ²
Fixing method	Straps at the case
Measures and weights	
Weight	4.00 kg



Subjects to change.