

Radio interference suppression filter, single phase **HLE 110-230/12**



Advantages

For enhanced requirements

Single-stage filter concept

Efficient filter effect against line-bound interference emissions

Increase in the interference immunity of the connected consumer

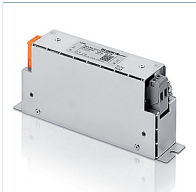
Applications

Radio interference suppression filter for line-side interference suppression of single devices, frequency converters or as group interference suppression.

Standards

Radio interference suppression filter to DIN EN 60939-2

Approvals



Radio interference suppression filter, single phase HLE 110-230/12

Type		HLE 110-230/12
Electrical data	Operating data	
	Rated voltage	250 Vac
	Voltage range	0 - 250 Vac
	Rated current	12 A
	Leakage current (50 Hz)*	8.50 mA
	Rated frequency	50 - 60 Hz
	Overrating Capacity	150 %, short-time
	Standards	
	Classification	EMI filter
	Environment	
Climatic category	25/085/21 (in accordance with EN 60068-1)	
Ambient temperature max.	50 °C	
Safety and protection		
Type	Metal enclosure	
Protection index	IP 20	
Safety class (prepared)	I	
Test voltage	1700 Vdc Phase/Phase, 2700 Vdc Phase/PE	
Notes		
*	Leakage current measured against the maximum permissible input voltage fluctuation in accordance with IEC 38 ±10 %	
Order numbers		
Order Number	HLE 110-230/12	

Type		HLE 110-230/12
Mechanical data	Terminal and mounting	
	Connections phase	Screw clamp, 4 mm ²
	Connections PE	Bolt, M5
	Fixing method	Mounting lugs
	Fixing screws	M5
Measures and weights		
Weight	0.78 kg	

