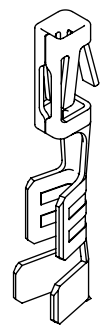


DO NOT SCALE FROM THIS PRINT



ALL DIMENSIONS ARE REFERENCES
(SEE XC-179-XX-X-XX FOR CONTROLLING PRINT)

CC79X-XXXX-XX-X

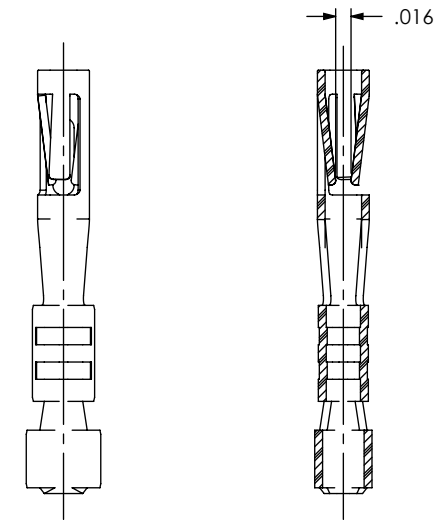
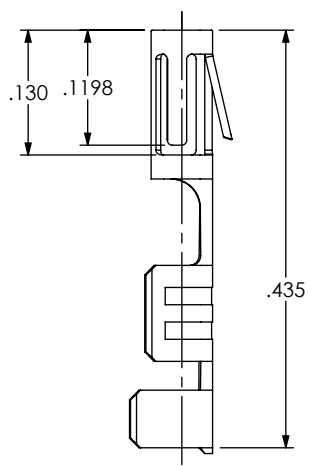
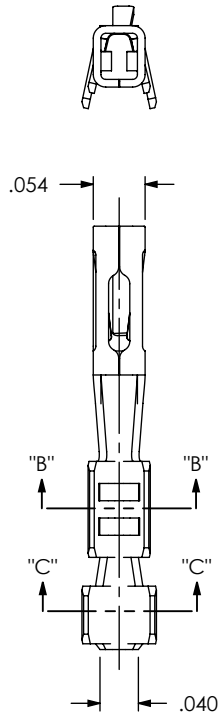
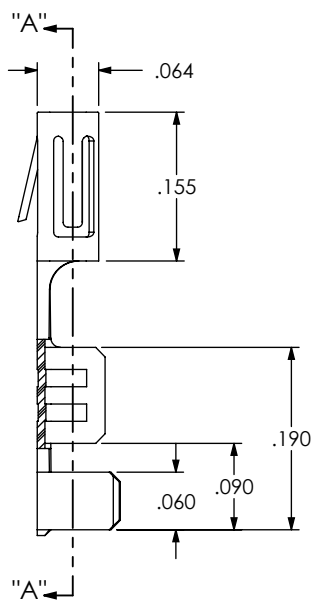
SUPPLIED
-L: LOOSE
-R: REEL

LEAD STYLE
-2630 (26-30 AWG)
-2024 (20-24 AWG)
** -2830 (28-30 AWG) (PTFE)

PLATING
-F: FLASH SELECTIVE
-L: LIGHT SELECTIVE
-S: SELECTIVE

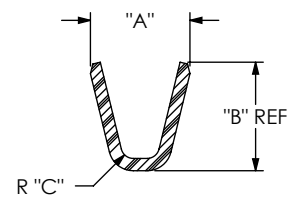
OPTION
(INSULATION THICKNESS)
-01

** NOT RELEASED FOR PRODUCTION

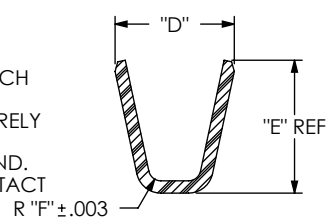


SECTION "A"- "A"

FIG 1
(CC79L-XXXX-0T-X SHOWN)



SECTION "B"- "B"



SECTION "C"- "C"

STYLE	"A"	"B"	"C"	"D"	"E"	"F"	"J"	"K"
-2630	.055	.045	.015	.080	.073	.025	.010	.020
-2024	.080	.073	.018	.110	.103	.030	.010	.030
*-2830	.055	.045	.015	.054	.057	.016	.010	.020

* NOT TOOLED

- NOTES:
1. REPRESENTS A CRITICAL DIMENSION.
 2. MAXIMUM PARTS PER REEL: 12,000 +300/-0 PCS.
 3. LABEL SHOULD INCLUDE PLATE CALLOUT AND PLACED ON REEL AS SHOWN.
 4. MAXIMUM No OF SPLICES PER REEL: 2. SPLICES ARE NOT TO BE CONNECTED. No OF SPLICES TO BE MARKED ON EACH REEL.
 5. REELED PARTS TO BE INTERLEAVED WITH THE PAPER BETWEEN EACH LAYER OF PARTS.
 6. MAXIMUM No OF INTERLEAVE PAPER SPLICES PER REEL: 3. SECURELY CONNECT INTERLEAF SPLICE.
 7. OUTER WRAP SHALL RECEIVE RB-24-0.75-P PROTECTIVE REEL BAND.
 8. GOLD PLATING IS NOT REQUIRED ON THE OUTSIDE OF THE CONTACT BOX OR ON THE SIDE WITH THE RETENTION LANCE.

UNLESS OTHERWISE SPECIFIED, DIMENSIONS ARE IN INCHES. TOLERANCES ARE:
DECIMALS ANGLES
.XX: 2°
.XXX:
.XXXX:

PROPRIETARY NOTE
THIS DOCUMENT CONTAINS INFORMATION CONFIDENTIAL AND PROPRIETARY TO SAMTEC, INC. AND SHALL NOT BE REPRODUCED OR TRANSFERRED TO OTHER DOCUMENTS OR DISCLOSED TO OTHERS OR USED FOR ANY PURPOSE OTHER THAN THAT WHICH IT WAS OBTAINED WITHOUT THE EXPRESSED WRITTEN CONSENT OF SAMTEC, INC.



520 PARK EAST BLVD, NEW ALBANY, IN 47150
PHONE: 812-944-6733 FAX: 812-948-5047
e-Mail: info@SAMTEC.com code: 55322

MATERIAL: DO NOT SCALE DRAWING SHEET SCALE: 5:1
PHOS BRONZE, 510 SPRING TEMPER
THICKNESS: .0080

DESCRIPTION: .100 IPD1 CONTACT

DWG. NO. CC79X-XXXX-XX-X

BY: DEAN P 8/12/2004 SHEET 1 OF 2

FIG 2
 (CC79R-XXXX-0T-X SHOWN)
 (SAME AS FIG 1, UNLESS OTHERWISE SHOWN)
 (SEE FIG 3 FOR REEL SPECIFICATIONS)

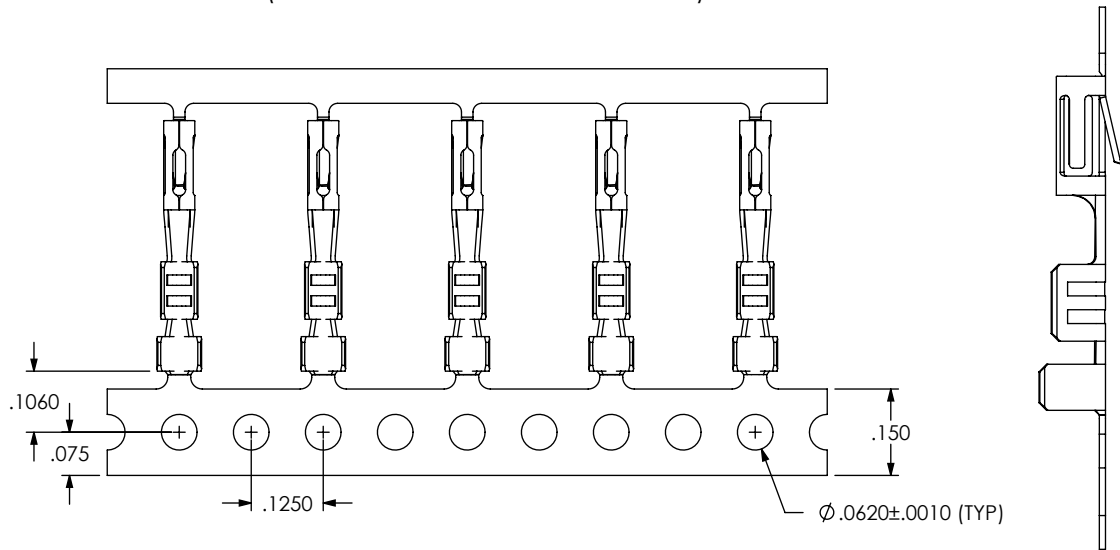
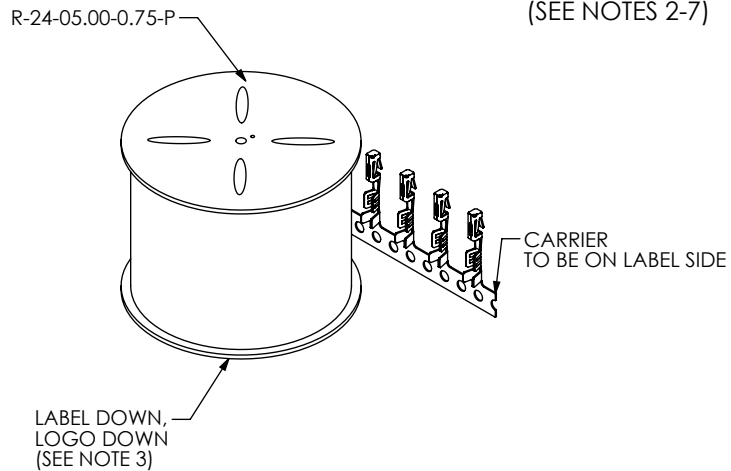
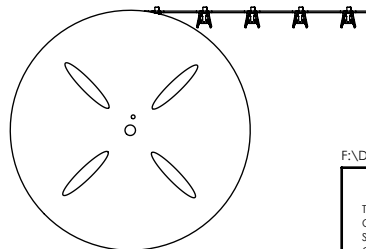


FIG 3
 REEL SPECIFICATIONS
 (SEE NOTES 2-7)



UNWINDING DIRECTION



F:\DWG\MISC\MKTG\CC79X-XXXX-XX-X-MKT.SLDDRW

PROPRIETARY NOTE
 THIS DOCUMENT CONTAINS INFORMATION CONFIDENTIAL AND PROPRIETARY TO SAMTEC, INC. AND SHALL NOT BE REPRODUCED OR TRANSFERRED TO OTHER DOCUMENTS OR DISCLOSED TO OTHERS OR USED FOR ANY PURPOSE OTHER THAN THAT WHICH IT WAS OBTAINED WITHOUT THE EXPRESSED WRITTEN CONSENT OF SAMTEC, INC.

DO NOT SCALE DRAWING

SHEET SCALE: 5:1

samtec

520 PARK EAST BLVD, NEW ALBANY, IN 47150
 PHONE: 812-944-6733 FAX: 812-948-5047
 e-Mail: info@SAMTEC.com code: 55322

DESCRIPTION:
 .100 IPD1 CONTACT

DWG. NO.
 CC79X-XXXX-XX-X

BY: DEAN P 8/12/2004 SHEET 2 OF 2