

# RASPBERRY PI STYLE ENCLOSURES

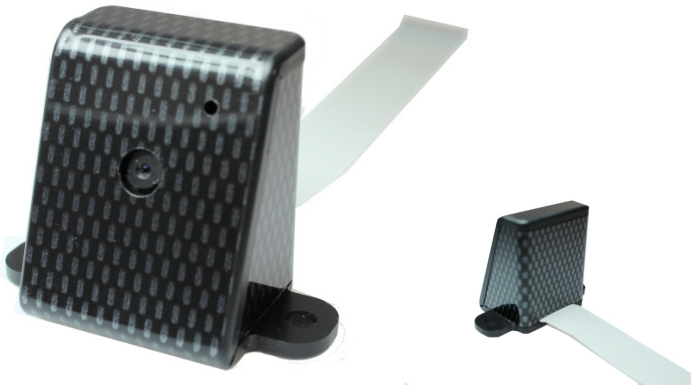
## Pi Camera Enclosure

No screws, no glue – just add your **Raspberry Pi** Camera!

- Designed to house the **Pi Camera** via clip-in grooves - **NO SCREWS REQUIRED!**
- All cut-outs are pre-cut into the case - **NO MODS REQUIRED!**
- Wall mountable
- High **Gloss Finish**

**Material:**

- Thickness 3mm: HB Rated
- Coloured Materials: High Impact Polystyrene (HIPS)
- Carbon Fibre Finish: Acrylic Capped ABS



Raspberry Pi Camera not included

Available in a range of colours: Gloss Finish



Crystal Clear      White      Black      \*Carbon Fibre

\* Carbon fibre finish:Acrylic capped ABS

CB PART NO.	COLOURS
CBRPC-WHT	White
CBRPC-CAR	Carbon Fibre
CBRPC-BLK	Black
CBRPC-CLR	Crystal Clear

UNIVERSAL  
ENCLOSURES

HAND  
HELD  
CASES

HEAVY  
DUTY  
ENCLOSURES

DIN  
RAIL  
BOXES

INTERFACE  
SUPPORTS

CONTROL  
STATIONS

DIECAST  
& METAL  
BOXES

DESKTOP &  
INSTRUMENT  
CASES

POTTING  
BOXES

19"  
ENCLOSURES

19"  
SUBRACKS

CUSTOM  
SIZED  
ENCLOSURES

CUSTOM  
SERVICES