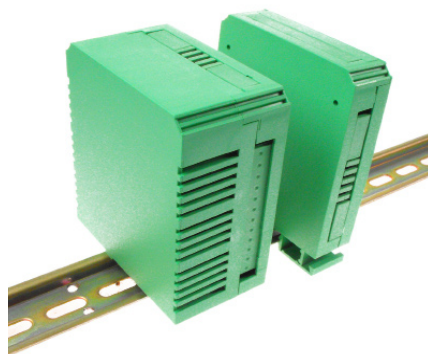


# DIN RAIL BOXES

## Vertical Box for DIN Rail

- Designed for 5mm pitch terminal blocks
- Two sizes, 22.5mm or 45mm wide
- Solid & perforated plates to cover unused terminal areas
- Three sides accept 12-way terminal blocks each side
- Complete box contains one 12-way closed, three 4-way closed & three 4-way perforated plates

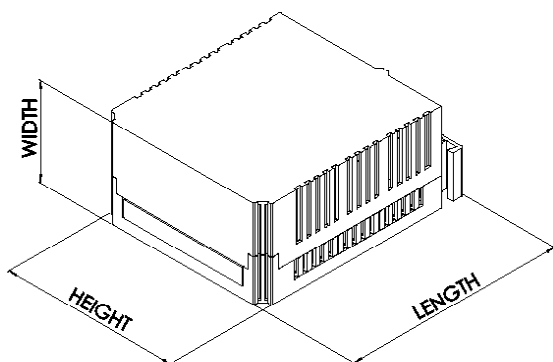
CVB



### SPECIFICATION

|                     |  |
|---------------------|--|
| Rating Terminals    | 8A/250VAC                              |
| Cable entry         | 2x2.5mm <sup>2</sup> Solid or Standard |
| Terminal protection | IP20                                   |
| Material            | PA66 UL94-V0                           |

| TYPE NO.   | DESCRIPTION          | SIZE                 |
|------------|----------------------|----------------------|
| CVB225/KIT | Complete plastic box | 22.5x82x101.75mm     |
| CVB450/KIT | Complete plastic box | 45x82x101.75mm       |
| CVBPF4     | 4 way perforated     | CVB Vent Plate       |
| CVBPP4     | 4 way closed plate   | CVB Blind Plate      |
| CVBPP12    | 12 way closed plate  | CVB Blind Plate Long |
| CVBMSC     | Prototyping board    |                      |



UNIVERSAL ENCLOSURES

HAND HELD CASES

HEAVY DUTY ENCLOSURES

DIN RAIL BOXES

INTERFACE SUPPORTS

CONTROL STATIONS

DIECAST & METAL BOXES

DESKTOP & INSTRUMENT CASES

POTTING BOXES

19" ENCLOSURES

19" CABINETS

DEVELOPMENT BOARD ENCLOSURES

CUSTOM SIZED ENCLOSURES

CUSTOM SERVICES