

DESCRIPTION: CAT5E, RJ45 (8P8C) MODULAR PLUG, UNSHIELDED, OFF-SET,
SOLID/STRANDED, FLAT/OVAL OR ROUND CABLE

MODEL NUMBER: 32-5998EUL

APPLICATION: MODULAR PLUG

CURRENT/VOLTAGE: 30 VAC/ 42 VDC AT 1.5 AMPS

CONTACT RESISTANCE: 10 MILLIOHMS MAX

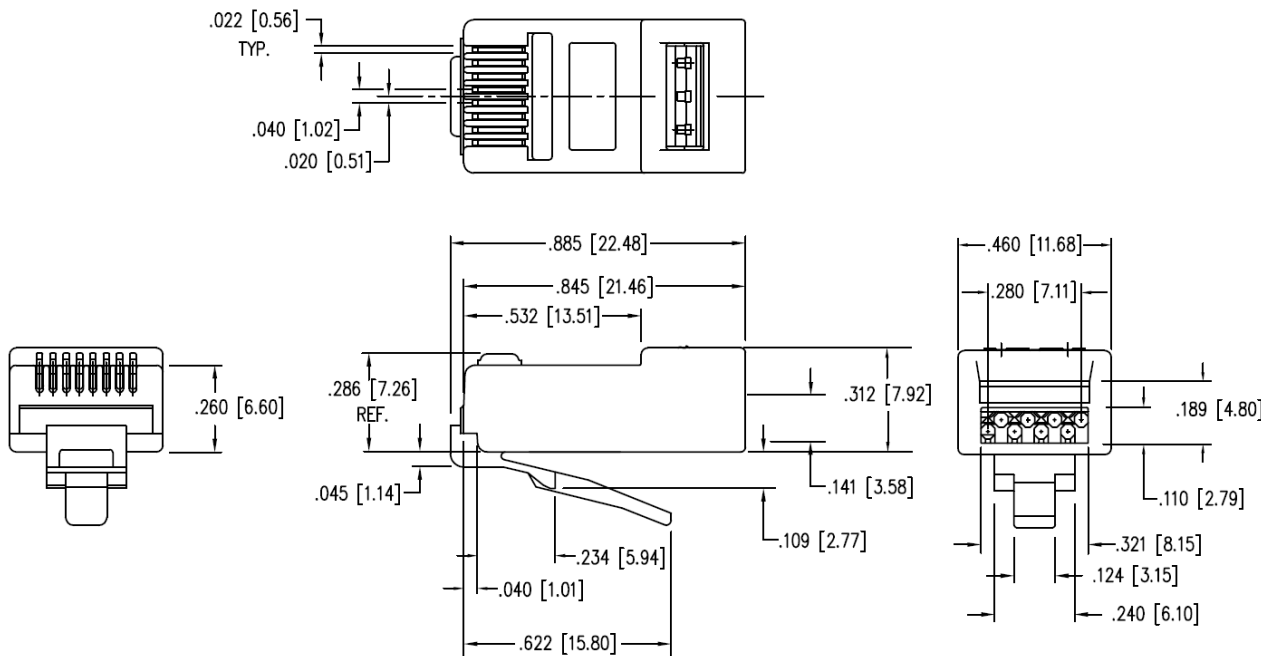
FREQUENCY RANGE: N/A

MATERIAL: HOUSING POLYCARBONATE
CONTACT PHOSPHOR BRONZE GOLD PLATED

RoHS COMPLIANCE: YES

TECHNICAL DETAIL: N/A

COMPLIES WITH ANSI/TIA-1096-A REQUIREMENTS.



<p>This PROPRIETARY Document is property of Cinch Connectivity Solutions. It is confidential in nature, non-transferable, and issued with the clear understanding that it is not traced or copied without permission and is returnable upon demand.</p> <p>INTERPRET DRAWING IN ACCORDANCE WITH ASME Y14.5-2009.</p>	<p>3RD ANGLE PROJECTION</p>	<h2>AIM-Cambridge</h2>	
	<p>RoHS <input checked="" type="checkbox"/></p> <p>2002/95/EC</p>	<p>Title: CAT5E, RJ45 (8P8C) Modular Plug, Unshielded, Off-set, Solid/Stranded, Flat/Oval or Round Cable</p>	
<p>UNLESS OTHERWISE SPECIFIED UNITS: INCH</p> <p>.XX ±.02 .XXX ±.005 ANGLES ±2°</p>	<p>Model No. 32-5998EUL</p>		
<p>Size A</p>	<p>DO NOT SCALE DRAWING</p>	<p>Date: 8/24/2013</p>	<p>Sheet 1 of 1</p>