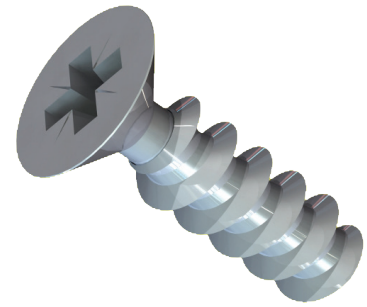
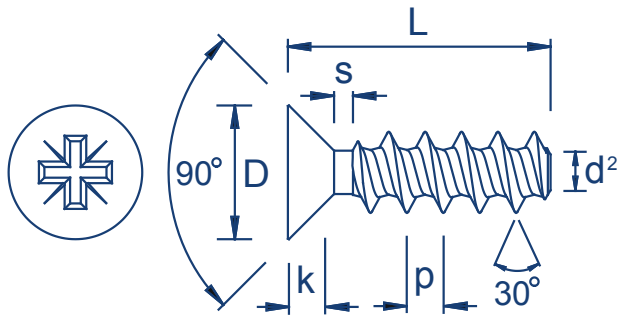


## Steel/Zinc & Clear (CR3)



## Dimensions (Metric)

Thread Dimensions	Screw Size	2.2	2.5	3.0	3.5	4.0	5.0	6.0
	d2 nom.	1.25	1.40	1.66	1.91	2.17	2.68	3.19
	p	0.98	1.12	1.34	1.57	1.79	2.24	2.69
	s (L > 3 x d1)	2.2	2.5	3.0	3.5	4.0	5.0	6.0
	s (L < 3 x d1)	1.1	1.3	1.5	1.8	2.0	2.5	3.0
Recommended Hole Size mm		1.54 - 1.87	1.75 - 2.12	2.10 - 2.55	2.45 - 2.97	2.80 - 3.40	3.50 - 4.25	4.20 - 5.10
Head Dimensions	D	3.8	4.7	5.5	7.3	8.4	9.3	11.3
	K	1.30	1.75	2.05	2.80	3.25	3.40	3.80
	Recess No.	1	1	1	2	2	2	3

## Preferred Lengths and Part Numbers (Metric)

		Length (L)										
		5	6	8	10	12	14	16	18	20	25	30
Screw Size	2.2											
	2.5											
	3.0		3.06 KRST30 TC1D	3.08 KRST30 TC1D	3.010 KRST30 TC1D	3.012 KRST30 TC1D		3.016 KRST30 TC1D		3.020 KRST30 TC1D	3.025 KRST30 TC1D	
	3.5			3.58 KRST30 TC1D	3.510 KRST30 TC1D	3.512 KRST30 TC1D		3.516 KRST30 TC1D		3.520 KRST30 TC1D	3.525 KRST30 TC1D	
	4.0				4.010 KRST30 TC1D	4.012 KRST30 TC1D		4.016 KRST30 TC1D		4.020 KRST30 TC1D	4.025 KRST30 TC1D	4.030 KRST30 TC1D
	5.0					5.012 KRST30 TC1D	5.014 KRST30 TC1D	5.016 KRST30 TC1D	5.018 KRST30 TC1D	5.020 KRST30 TC1D	5.025 KRST30 TC1D	5.030 KRST30 TC1D
	6.0											

Driver bits are available from stock for all screw sizes