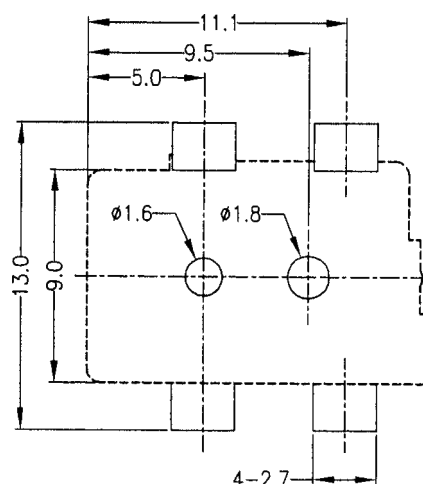
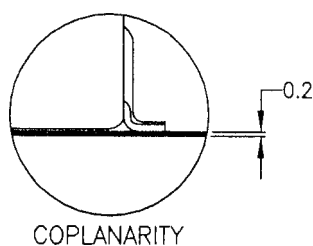
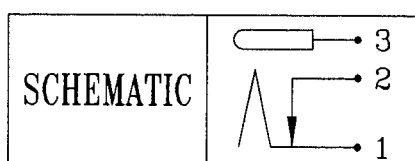
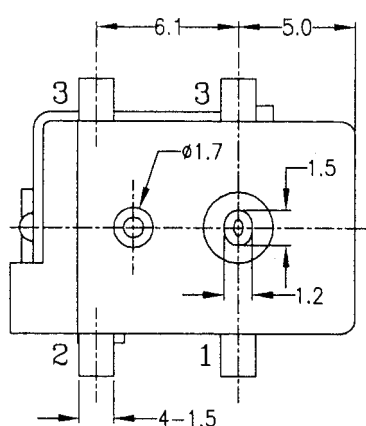
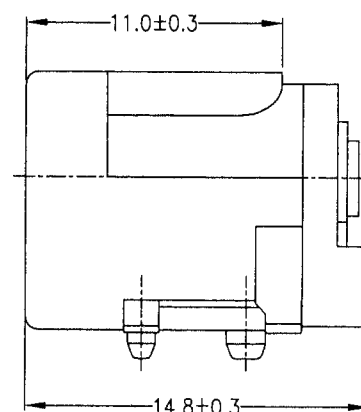
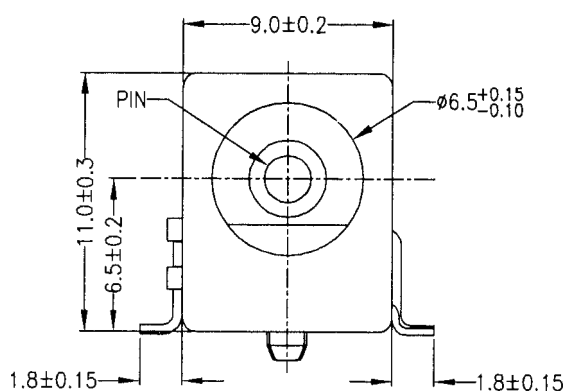
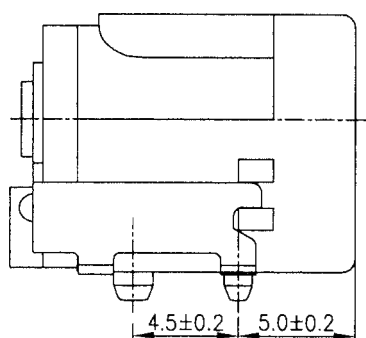


Chassis Socket



Specification Table:

Description	Part Number	
	MJ-179SMT	MJ-180SMT
Pin Diameter	2mm	2.5mm
Voltage Rating	12V DC	
Current Rating	500mA	1A



Dimensions : Millimetres

Chassis Socket



Item	Name	Material	Finish	Qty	Note
1	Housing	Polyamide	30	1	-
2	Back Cover				-
3	Spring Contact	PBS	Ag		30T
4	Shunt	Brass			40T
5	Rivet Contact				
6	Centre Pin	Cu	Ni		ø2/ø2.5

Part Number Table

Description	Pin Dia.	Tolerance	Part Number
Chassis Socket, PSU, SMT, 2mm Pin Dia.	2	±0.05	MJ-179SMT
Chassis Socket, PSU, SMT, 2.5mm Pin Dia.	2.5		MJ-180SMT

Important Notice : This data sheet and its contents (the "Information") belong to the members of the Premier Farnell group of companies (the "Group") or are licensed to it. No licence is granted for the use of it other than for information purposes in connection with the products to which it relates. No licence of any intellectual property rights is granted. The Information is subject to change without notice and replaces all data sheets previously supplied. The Information supplied is believed to be accurate but the Group assumes no responsibility for its accuracy or completeness, any error in or omission from it or for any use made of it. Users of this data sheet should check for themselves the Information and the suitability of the products for their purpose and not make any assumptions based on information included or omitted. Liability for loss or damage resulting from any reliance on the Information or use of it (including liability resulting from negligence or where the Group was aware of the possibility of such loss or damage arising) is excluded. This will not operate to limit or restrict the Group's liability for death or personal injury resulting from its negligence. Multicomp is the registered trademark of the Group. © Premier Farnell plc 2012.