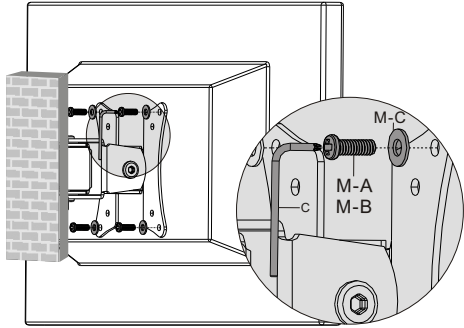
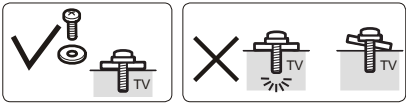


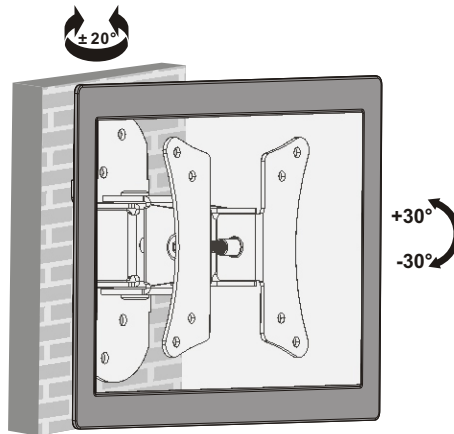
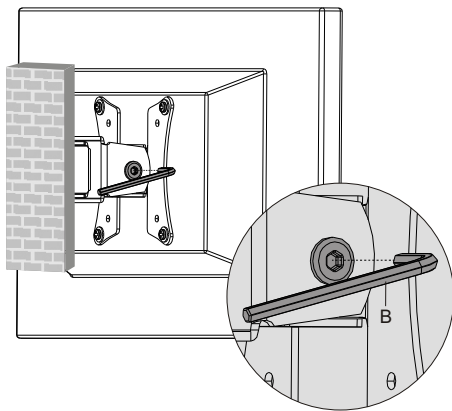
2. Attach the Display to the VESA Plate



Lift the display and match the hole on your display with the hole on the mount. Secure your display to the mount by tightening screws.

⚠️ Tighten all screws but do not over tighten.

3. Adjustment



It is necessary to slightly loosen or tighten the adjustment screws using an Allen key according to the weight of display installed.

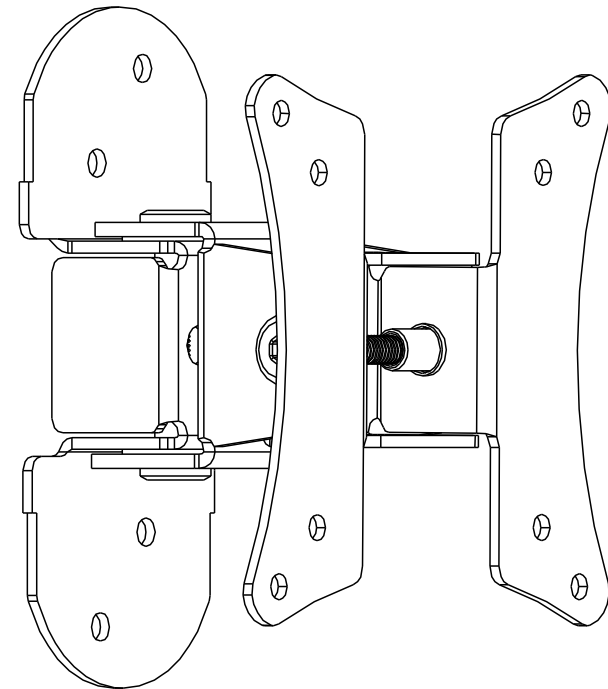
Adjust to the desired location or tilt.

Maintenance

- Check that the bracket is secure and safe to use at regular intervals (at least every three months).
- Please contact your dealer if you have any questions.

PRO-SIGNAL

INSTALLATION INSTRUCTIONS



LCD Wall Mount



CAUTION: DO NOT EXCEED MAXIMUM LISTED WEIGHT CAPACITY. SERIOUS INJURY OR PROPERTY DAMAGE MAY OCCUR!

PSG03394



75x75
100x100

22"
MAX



15kg
(33lbs)
MAX

ISSUED: NOV. 2012

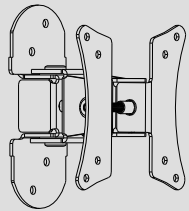
NOTE: Read the entire instruction manual before you start installation and assembly.

WARNING

- Do not begin the installation until you have read and understood the instructions and warnings contained in this installation sheet. If you have any question regarding any of the instruction or warning, please contact your local distributor.
- This mounting bracket was designed to be installed and utilized ONLY as specified in this manual. Improper installation of this product may cause damage or serious injury.
- This product should only be installed by someone of good mechanical ability, with basic building experience and fully understanding of this manual.
- Make sure that the supporting surface will safely support the combined load of the equipment and all attached hardware and components.
- If mounting to wood wall studs, make sure that mounting screws are anchored into the center of the studs. The use of a stud finder is highly recommended.
- Always use assistant or mechanical lifting equipment to safely lift and position equipment.
- Tighten screws firmly, but do not over tighten. Over tightening can damage the items, greatly reducing their holding power.
- This product is intended for indoor use only. Using this product outdoors could lead to product failure and personal injury.

Component Checklist

IMPORTANT: Ensure that you have received all parts according to the component checklist prior to installing. If any parts are missing or faulty, telephone your local distributor for a replacement.



wall mount (x1)
A



Allen key (x1)
B

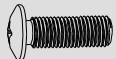


L-shape phillips screwdriver (x1)
C

Package M



M4x14 (x4)
M-A



M5x14 (x4)
M-B

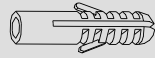


D5 washer (x4)
M-C

Package W

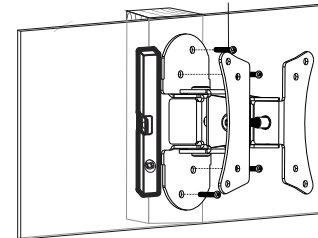
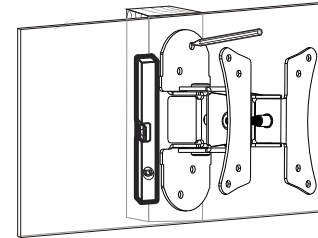
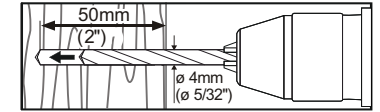
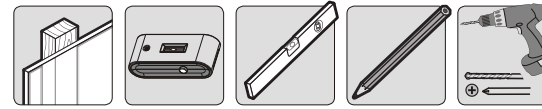


ST5.5x50 (x4)
W-A

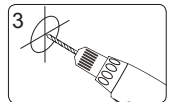
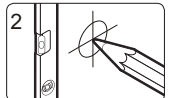


concrete anchor (x4)
W-B

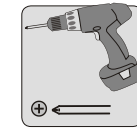
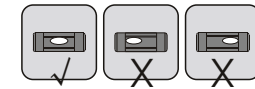
1a. Mount on Wood Stud Wall



Find and mark the exact location of mounting holes

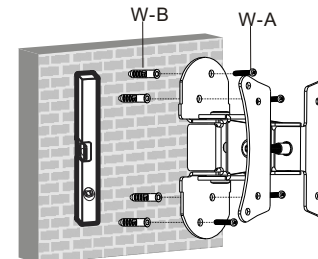
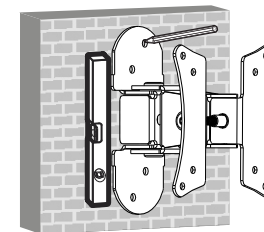
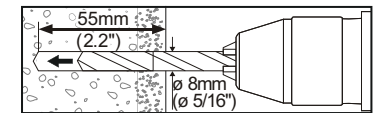
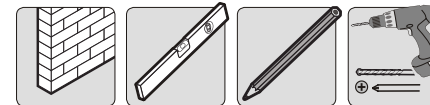


Drill pilot holes

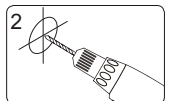


Screw the wall mount onto the wall

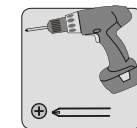
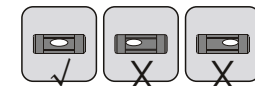
1b. Mount on Brick and Concrete Block



Mark the exact location of mounting holes



Drill pilot holes



Screw the wall mount onto the wall