

TECHNICAL CHARACTERISTICS

SPECIFICATION

- >Rating: 50mA, 12VDC
- >Contact Resistance: Initial: 100mOHM max. After Life Test: 20HM max.
- >Insulation Resistance: min. 100MOHM at 500VDC
- >Dielectric Strength: 250VAC for 1 minute
- >Stroke: 0.25 + 0.2 mm / - 0.1 mm
- >Bounce: 10ms max.

MATERIAL

- >Cover: Stainless Steel
- >Stem: LCP UL 94V-0
- >Frame: PA9T UL 94V-0, color Black
- >Contact: Stainless Steel with silver
- >Terminal: Brass with silver plating

SOLDERING INFORMATION

- >Terminal in THT version
- >Wave 260°C 10sec. max
- >Hand soldering under 350°C for 3 sec. max

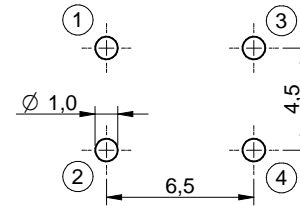
ENVIRONMENTAL

- >Storage condition: -40°C ~ +85°C
- >Operation condition: -40°C ~ +85°C
- >Compliance: Lead Free, ROHS, Reach

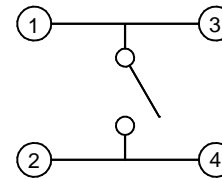
PACKAGING INFORMATION

>Bulk

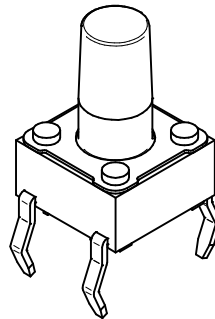
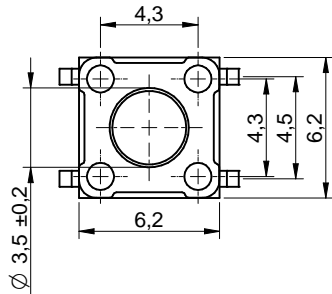
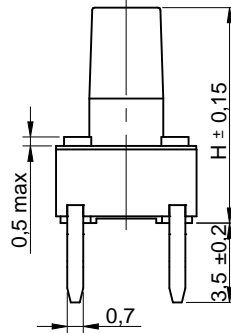
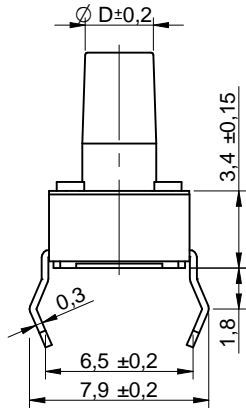
PN	Force	Color of Stem	Life cycle	-043		-050		-070		-095		-130	
				H	Ø D	H	Ø D	H	Ø D	H	Ø D	H	Ø D
430 186 xxx 716	160g ± 50gr	Black	1.000.000	4.3	3.5	5.0	3.5	7.0	3.0	9.5	3.0	13.0	3.0
430 156 xxx 726	260g ± 50gr	White	200.000										
430 156 xxx 736	360g ± 50gr	Salmon	200.000										



P.C.B. MOUNTING PLAN



SCHEMATIC



Scale - 3:1

This electronic component is designed and developed with the intention for use in general electronics equipments.

Before incorporating the components into any equipments in the field such as aerospace, aviation, nuclear control, submarine, transportation, (automotive control, train control, ship control), transportation signal, disaster prevention, medical, public information network etc. where higher safety and reliability are especially required or if there is possibility of direct damage or injury to human body, Würth Elektronik must be asked for a written approval.

In addition, even electronic component in general electronic equipments, when used in electrical circuits that require high safety, reliability functions or performance, the sufficient reliability evaluation-check for the safety must be performed before by the user before usage.

		Projection		GENERAL TOLERANCE .x = +/- 0,2 .xx = +/- 0,15		Basic material	
				Date	Name	DESCRIPTION	
				Drawn 09-09-14	Jelisarow		
				Checked 09-09-14	Hsu	WS-TATV 6x6mm Switch, THT version	
d	material change	14-08-19	AL			Scale	3:1
c	revised MatchCode	14-07-24	AL			Position	
b	Bounce 10ms max.	14-04-11	DaF			SIZE	
a	warning text	11-10-28	WJ			Drawing.- No. 4301x6xxx7x6	
REV	FILE	DATE	BY	EDV NO 4301x6xxx7x6.dft		System :Solid Edge V20	