

13

12

11

10

J

I

H

G

F

E

D

C

B

A



12

11

10

9

8

7

6

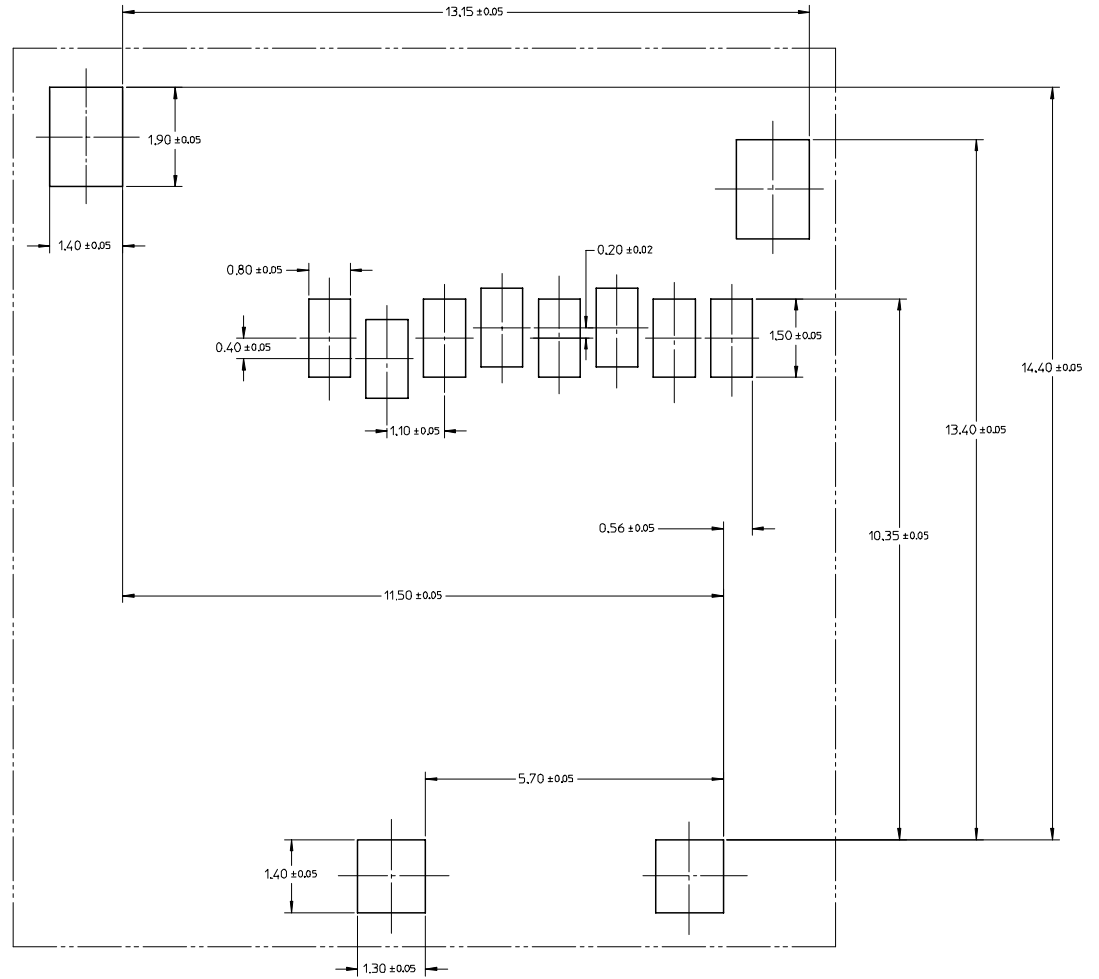
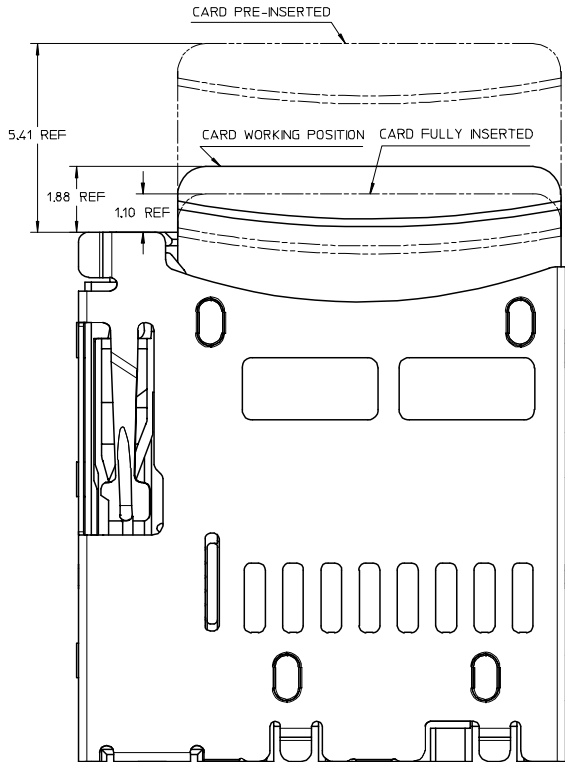
5

4

3

2

1



RECOMMENDED PCB LAYOUT

NOTES:

1 MATERIAL:

- 1-1 TERMINAL, FITTING NAIL : COPPER ALLOY
- 1-2 SHELL, CAM PIN, SPRING : STAINLESS STEEL
- 1-3 HOUSING, CAM : LCP, UL 94-V0, BLACK

2 FINISH:

- 2-1 TERMINAL : NICKEL UNDERPLATED, GOLD PLATING ON CONTACT AREA
TIN PLATING ON SOLDER TAIL
- 2-2 SHELL : GOLD FLASH OVER NICKEL UNDERPLATED ON SOLDER PAD

3 MECHANICAL SPECIFICATION:

REPEATED 5,000 TIMES MATING AND UNMATING CYCLES AND STILL MEET ELECTRICAL CHARACTERISTICS

4 ELECTRICAL SPECIFICATION:

- 4-1 RATED CURRENT (PER CONTACT) : 0.5AMPS MAX AND TEMPERATURE RISE SHOULD BE 30°C MAX
- 4-2 INSULATION RESISTANCE(IR) : 100 MEGOHMS MIN.
- 4-3 DIELECTRIC WITHSTANDING VOLTAGE : 500 VAC
- 4-4 CONTACT RESISTANCE: 100 MILLIOHMS MAX

REVISED EIC NO.: SH2007-0499 DRWN: ZHOU CHKD: XU XIANG APPR: JINCHEN 2007/02/12 2007/03/16	DESCRIPTION 2007/03/16	QUALITY SYMBOLS	GENERAL TOLERANCES (UNLESS SPECIFIED)	DIMENSION STYLE	SCALE	DESIGN UNITS	THIRD ANGLE PROJECTION	
		$\nabla=0$ $\nabla=0$	mm INCH 4 PLACES ± --- ± --- 3 PLACES ± --- ± --- 2 PLACES ± 0.15 ± --- 1 PLACE ± --- ± --- ANGULAR ± 1/2°	MM ONLY	10:1	METRIC	DRAWN BY: XIXU CHECKED BY: XIXU APPROVED BY: JNCHEN DATE: 2006/03/25 DATE: 2006/03/28 DATE: 2006/03/29	TITLE: TFR&MICRO SD CARD READER PUSH PUSH TYPE WITHOUT DETECT SWITCH MOLEX INCORPORATED
		DRAFT WHERE APPLICABLE MUST REMAIN WITHIN DIMENSIONS	MATERIAL NO.: 473340001	DOCUMENT NO.: SD-47334-001	SHEET NO.: 2 OF 2			
		SIZE: A2	THIS DRAWING CONTAINS INFORMATION THAT IS PROPRIETARY TO MOLEX INCORPORATED AND SHOULD NOT BE USED WITHOUT WRITTEN PERMISSION					