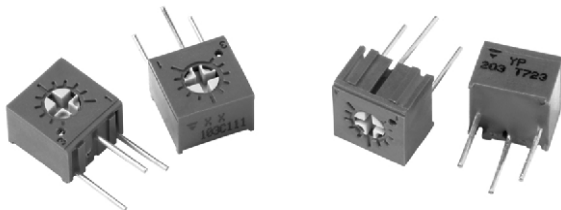


1/4" Square Single-Turn Cermet Sealed Trimmer



FEATURES

- Industrial grade
- Fully sealed
- Miniature package
- Rotor designed for automatic machine adjust interface
- Withstands harsh environments and immersion cleaning process
- Tests according to CECC 41000 or IEC 60393-1
- Material categorization: For definitions of compliance please see www.vishay.com/doc?99912



RoHS
COMPLIANT

| DIMENSIONS in millimeters (± 0.25 mm) | | |
|--|---------------------|---------------------|
| <p>Common dimensions Top adjust T73Y</p> <p>Cruciform slot $\varnothing 3$ long 2.77, wide 0.64 - deep 0.89</p> | <p>T73YP</p> | <p>T73YE</p> |
| | <p>T73YU</p> | <p>T73YB</p> |
| <p>Common dimensions Side adjust T73X</p> <p>Cruciform slot $\varnothing 3$ long 2.77, wide 0.64 - deep 0.89</p> | <p>T73XX</p> | <p>T73XH</p> |
| | <p>T73XW</p> | <p>T73XF</p> |

| ELECTRICAL SPECIFICATIONS | |
|--|--|
| Resistive element | Cermet |
| Electrical travel | 240° nominal |
| Resistance range | 10 Ω to 2 MΩ |
| Standard series | 1 - 2 - 5 |
| Tolerance standard | 10 % |
| Power rating | linear 0.5 W at + 70 °C |
| Circuit diagram | |
| Temperature coefficient | ± 100 ppm/°C |
| Limiting element voltage | 300 V |
| Contact resistance variation | 1 % R _n or 3 Ω max. whichever is greater |
| Absolute minimum resistance | 1 % R _n or 2 Ω max. whichever is greater |
| Adjustability | ± 0.05 % voltage ± 0.15 % resistance |
| Resolution | infinite |
| Insulation resistance (500 V _{DC}) | 10 ³ MΩ minimum |
| Dielectric strength | 900 V _{AC} sea level 350 V _{AC} 80 000 feet |

| MECHANICAL SPECIFICATIONS | |
|----------------------------------|-------------------|
| Mechanical travel | 270° |
| Operating torque (max. Ncm) | 2.1 |
| End stop torque (max. Ncm) | 4.9 |
| Unit weight (max. g) | 0.6 |
| Terminals | Pure Sn (code e3) |

| ENVIRONMENTAL SPECIFICATIONS | |
|-------------------------------------|---------------------|
| Temperature range | - 55 °C to + 125 °C |
| Climatic category | 55/100/56 |
| Sealing | Fully sealed - IP67 |



| PERFORMANCES | | | |
|-----------------|------------------------------|---------------------------|---|
| TESTS | CONDITIONS | TYPICAL VALUES AND DRIFTS | |
| Load life | 1000 h - 0.5 W at + 70 °C | $\Delta R_T/R_T$ (%) | CRV < 3 Ω or 3 % whichever is greater |
| | | 3 % | |
| Shock | 100 g | ± 1 % | $\Delta V/V \leq \pm 1$ % |
| Vibration | 30 g | ± 1 % | $\Delta V/V \leq \pm 1$ % |
| Humidity | MIL-STD202 method 103 - 96 h | ± 2 % | i.R. 10 M Ω |
| Rotational life | 200 cycles | ± 4 % | CRV < 3 Ω or 3 % whichever is greater |

| STANDARD RESISTANCE ELEMENT DATA | | | | |
|----------------------------------|---------------------|----------------------|--------------------|--|
| STANDARD RESISTANCE VALUES | LINEAR LAW | | | TYPICAL TCR - 55 °C + 125 °C ppm/°C |
| | MAX. POWER AT 70 °C | MAX. WORKING VOLTAGE | MAX. WIPER CURRENT | |
| Ω | W | V | mA | |
| 10 | 0.50 | 2.2 | 224 | ± 100 |
| 20 | 0.50 | 3.2 | 160 | |
| 50 | 0.50 | 5.0 | 100 | |
| 100 | 0.50 | 7.1 | 70 | |
| 200 | 0.50 | 10.0 | 50 | |
| 500 | 0.50 | 15.8 | 32 | |
| 1K | 0.50 | 22.4 | 22 | |
| 2K | 0.50 | 31.6 | 16 | |
| 5K | 0.50 | 50 | 10 | |
| 10K | 0.50 | 70.7 | 7.1 | |
| 20K | 0.50 | 100 | 5.0 | |
| 50K | 0.50 | 158.1 | 3.2 | |
| 100K | 0.50 | 223.6 | 2.2 | |
| 200K | 0.45 | 300 | 1.5 | |
| 500K | 0.18 | 300 | 0.60 | |
| 1M | 0.09 | 300 | 0.30 | |
| 2M | 0.05 | 300 | 0.15 | |

| MARKING |
|---|
| <ul style="list-style-type: none"> • Vishay trademark • Resistance code • Terminal numbers • Date code • Model |

| PACKAGING |
|---|
| <ul style="list-style-type: none"> • In tube of 50 pieces code T20 (TU50) • On request: Tape and reel for style YU, code R32 (TR750) and style XW code R15 (TR1000) |



| ORDERING INFORMATION (Part Number) | | | | | | | | | | | | | | | |
|------------------------------------|--|---|---|--|---|---|--|---|---|---|---|---|--|--|--|
| T | 7 | 3 | Y | P | 5 | 0 | 4 | K | T | 2 | 0 | | | | |
| MODEL | STYLE | | | OHMIC VALUE | | | TOLERANCE | | PACKAGING | | | SPECIAL NUMBER | | | |
| T73 | XF XH XW XX YB YE YM YP YU | | | From 10 Ω to 2.2 MΩ 103 = 10 kΩ | | | K = 10 % on request J = 5 % | | T20 = Tube 50 pieces On request: R15 = reel 1000 pieces for style XW R32 = Reel 750 for style YU | | | (If applicable) Given by Vishay for custom design | | | |

| DESCRIPTION (for information only) | | | | | |
|------------------------------------|-------|-------|-----------|-----------|-------------|
| T73 | YP | 500K | 10 % | TU | e3 |
| MODEL | STYLE | VALUE | TOLERANCE | PACKAGING | LEAD FINISH |



Disclaimer

ALL PRODUCT, PRODUCT SPECIFICATIONS AND DATA ARE SUBJECT TO CHANGE WITHOUT NOTICE TO IMPROVE RELIABILITY, FUNCTION OR DESIGN OR OTHERWISE.

Vishay Intertechnology, Inc., its affiliates, agents, and employees, and all persons acting on its or their behalf (collectively, "Vishay"), disclaim any and all liability for any errors, inaccuracies or incompleteness contained in any datasheet or in any other disclosure relating to any product.

Vishay makes no warranty, representation or guarantee regarding the suitability of the products for any particular purpose or the continuing production of any product. To the maximum extent permitted by applicable law, Vishay disclaims (i) any and all liability arising out of the application or use of any product, (ii) any and all liability, including without limitation special, consequential or incidental damages, and (iii) any and all implied warranties, including warranties of fitness for particular purpose, non-infringement and merchantability.

Statements regarding the suitability of products for certain types of applications are based on Vishay's knowledge of typical requirements that are often placed on Vishay products in generic applications. Such statements are not binding statements about the suitability of products for a particular application. It is the customer's responsibility to validate that a particular product with the properties described in the product specification is suitable for use in a particular application. Parameters provided in datasheets and/or specifications may vary in different applications and performance may vary over time. All operating parameters, including typical parameters, must be validated for each customer application by the customer's technical experts. Product specifications do not expand or otherwise modify Vishay's terms and conditions of purchase, including but not limited to the warranty expressed therein.

Except as expressly indicated in writing, Vishay products are not designed for use in medical, life-saving, or life-sustaining applications or for any other application in which the failure of the Vishay product could result in personal injury or death. Customers using or selling Vishay products not expressly indicated for use in such applications do so at their own risk. Please contact authorized Vishay personnel to obtain written terms and conditions regarding products designed for such applications.

No license, express or implied, by estoppel or otherwise, to any intellectual property rights is granted by this document or by any conduct of Vishay. Product names and markings noted herein may be trademarks of their respective owners.

Material Category Policy

Vishay Intertechnology, Inc. hereby certifies that all its products that are identified as RoHS-Compliant fulfill the definitions and restrictions defined under Directive 2011/65/EU of The European Parliament and of the Council of June 8, 2011 on the restriction of the use of certain hazardous substances in electrical and electronic equipment (EEE) - recast, unless otherwise specified as non-compliant.

Please note that some Vishay documentation may still make reference to RoHS Directive 2002/95/EC. We confirm that all the products identified as being compliant to Directive 2002/95/EC conform to Directive 2011/65/EU.

Vishay Intertechnology, Inc. hereby certifies that all its products that are identified as Halogen-Free follow Halogen-Free requirements as per JEDEC JS709A standards. Please note that some Vishay documentation may still make reference to the IEC 61249-2-21 definition. We confirm that all the products identified as being compliant to IEC 61249-2-21 conform to JEDEC JS709A standards.