

TECHNICAL CHARACTERISTICS

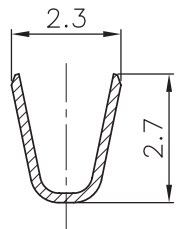
MATERIAL
 CONTACT MATERIAL: COPPER ALLOY
 CONTACT TYPE: STAMPED
 CONTACT PLATING: TIN
 QUALITY CLASS: 25 MATING CYCLES
 PITCH: 2.00MM

ENVIRONMENTAL
 OPERATING TEMPERATURE: -25°C UP TO +85°C
 COMPLIANCE: LEAD FREE AND ROHS

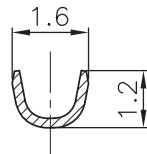
ELECTRICAL
 CURRENT RATING: 2A
 WORKING VOLTAGE: 125V AC
 CONTACT RESISTANCE: 20 mOHM MAX

WIRE DIMENSION
 AWG: AWG 24 - 28

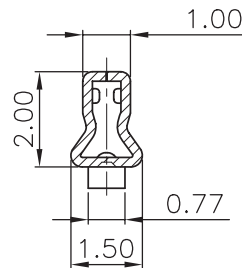
PACKAGING
 10KPCS REEL



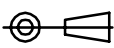

Section:A-A

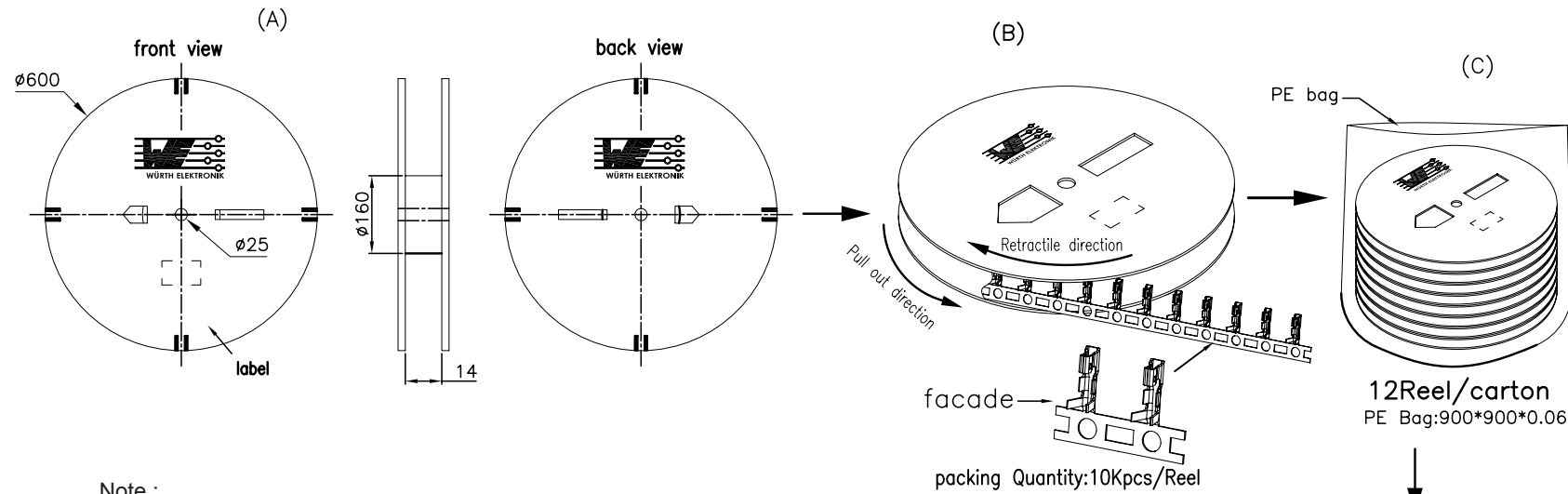


Section:B-B



Section:C-C

RoHS Compliant				PROJECTION: 	GENERAL TOLERANCE .X = +/- 0.2 .XX = +/- 0.15		DESCRIPTION: 2.00 MM FEMALE CRIMP TERMINAL	SIZE A4
G	26-MAY-14	OPE TEMPERATURE	QL					
F	06-AUG-13	CHARACTERISTIC	QL					
E	11-MAY-10	PACKAGING	JP					
D	19-FEB-09	DRAW	JP					
C	09-AUG-08	T&R DESCRIPTION	RB	APPROVAL: RJ	UNIT: MM	WERI PART NO: 62000113722		
B	31-JAN-07	DRAW	EC		SCALE:			
A	28-FEB-06	PDF	JP		SHEET: 1/2			
REV	DATE	FILE	BY		DRAW: MIKE			



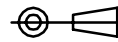
Note :

1. All dimensions meet EIA-481-3 requirements.
2. Material :WH Conductive polystyrene Alloy.
3. Thickness : 0.50±0.05mm.
4. Component load per reel : 10.000 pcs.
5. Reel size : diameters 160*25, T=14.
6. Reel chipboard size : diameters 600*25, T=14.
7. Bag size : 900*900*0.06.
8. Carton size : 615*615*340.

Q'tY/Reel	Reel/Carton	Q'tY/Carton
10Kpcs	12	120Kpcs

RoHS Compliant			
G			
F			
E			
D			
C			
B			
A			
REV	DATE	FILE	BY

PROJECTION:



APPROVAL:

GENERAL TOLERANCE

.X = ± 0.2

.XX = ± 0.15

UNIT: MM

SCALE:

SHEET: 2/2

DRAW: MIKE



DESCRIPTION: 2.00MM FEMALE CRIMP TERMINAL

WERI PART NO: 6200 01 13722

SIZE

A4