

PRODUCT NUMBER

5 4 2 0 2 - X X X X - X X X LF

PLATING

S=15μm [0.38μm]
ON CONTACT AREA
100μm [2.5μm] TIN
ON TAIL (NOTE 13)
G=30μm [0.76μm]
ON CONTACT AREA
100μm [2.5μm] TIN
ON TAIL (NOTE 13)
T=100μm [2.5μm] TIN
ON CONTACT AREA
AND ON TAIL (SEE NOTE 11)
F=2μm [0.05μm] GOLD
ON CONTACT AREA
AND ON TAIL

LEAD FREE OPTION NOTE 9 & 10

POLARIZATION
NOTE 6

PACKAGING TYPE, NOTE 5

POSITIONS PER ROW
02 TO 20

LEAD STYLE	POST	TAIL OVERALL WIDTH	PCB LAYOUT
08 30	0.230/5.84 0.318/8.08	.290 ^{+0.015} / _{-0.017} / 7.37 ^{+0.38} / _{-0.43}	FIGURE 1
60	0.575/14.60	.374 ^{+0.015} / _{-0.017} / 9.50 ^{+0.38} / _{-0.43}	FIGURE 2

NOTES:

① HOUSING MAT'L: HIGH TEMPERATURE THERMOPLASTIC.
FLAME RETARDANT PER UL 94V-0
COLOR: BLACK
OR
MINERAL FILLED LCP FLAME RETARDENT
PER UL-94V-0. COLOR: BLACK.
THESE PART NUMBERS WILL WITHSTAND EXPOSURE
TO 260 C PEAK TEMPERATURE FOR 20 SECONDS IN
WAVE SOLDER, INFRA-RED OR VAPOR PHASE SOLDER PROCESS.

② PIN MATERIAL: PHOSPHOR-BRONZE

③ TO DETERMINE DIMENSIONS:
N = NUMBER OF POSITIONS ROW.
EXAMPLE: 10 POS., N x .100/2.54=1.00/25.4

④ 2LBS/0.9KG MIN. PIN RETENTION IN EITHER DIRECTION.

⑤ PACKAGING:
_ =POLY BAGS WITHOUT PICKUP CAP.
T =TUBES (OMIT DASH IF NOT POLARIZED).
P =TUBES WITH PICKUP CAPS.
A =TAPE AND REEL WITH PICKUP CAPS.
C =CUSTOMIZED TAPE AND REEL WITH PICKUP CAPS.

⑥ FOR POLARIZATION, SPECIFY POSITION NUMBER
(i.e. A03=ROW A POS. 3) TO OMIT PIN.
OMIT FROM PRODUCT NUMBER IF THIS FEATURE IS NOT APPLICABLE.
PRODUCT MANAGEMENT APPROVAL REQUIRED PRIOR TO RELEASE
OR SALE OF POLARIZED PRODUCTS.

7. UNDERPLATING: 50μm/1.2μm Ni.

8. PIN TIPS ON Sn PLATED PRODUCT MAY HAVE BARE METAL ON TWO SIDES,
BOTH ENDS.

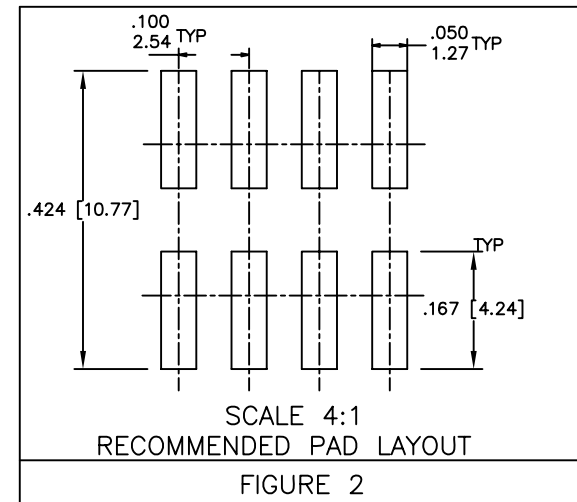
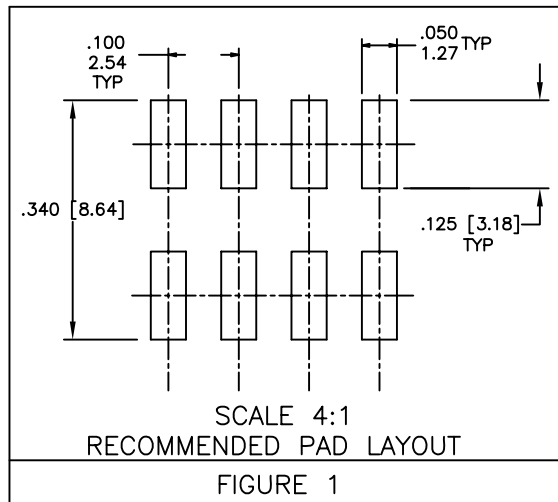
⑨ PART NUMBERS WITH "LF" SUFFIX AT THE END ARE LEAD FREE.

⑩ THESE PRODUCTS MEETS EUROPEAN UNION DIRECTIVES AND OTHER
COUNTRY REGULATION AS DESCRIBED IN GS-22-008.

⑪ "THIS PRODUCT HAS 100% PURE TIN PLATING IN THE INTERFACE AND
HAS NOT BEEN TESTED FOR WHISKER GROWTH IN ALL INTERCONNECT
ENVIRONMENTS."

12. THE HOUSING WILL WITHSTAND EXPOSURE TO 260°C PEAK TEMPERATURE
FOR 20 SECONDS IN A CONVECTION, INFRA-RED OR VAPOR PHASE REFLOW
OVEN. SEE APPLICATION NOTES/PROCEDURES IF THEY ARE AVAILABLE.

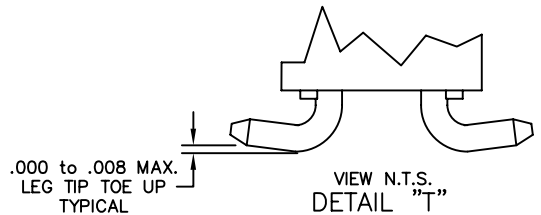
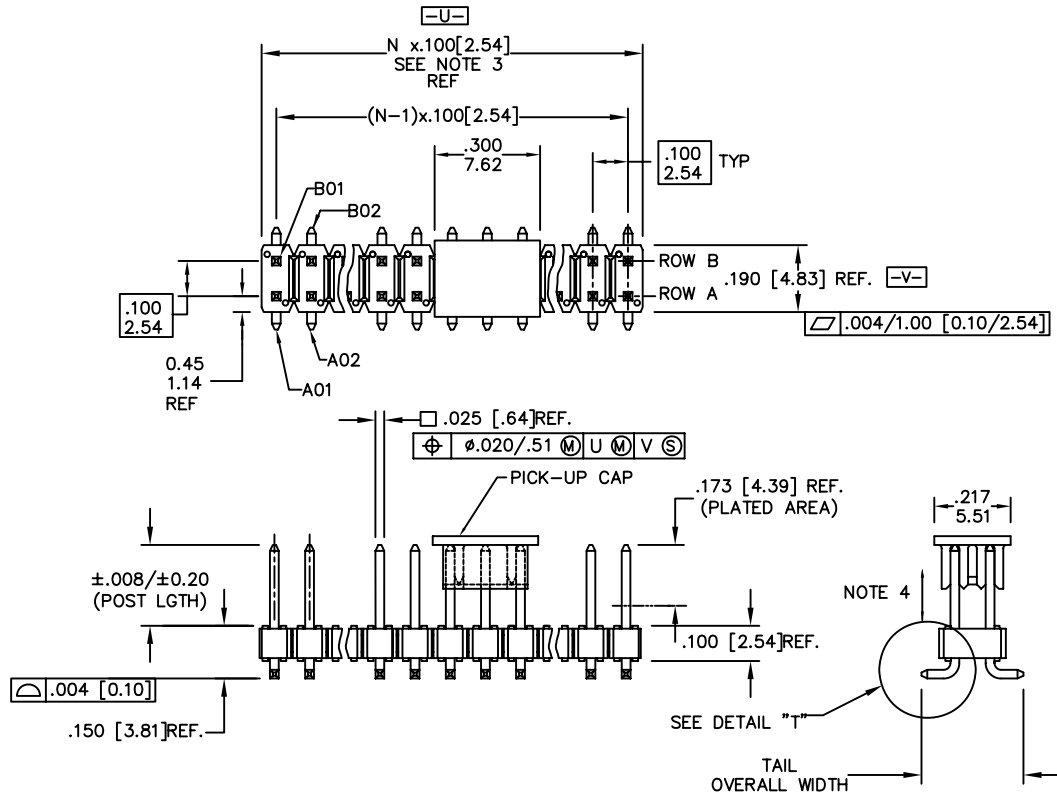
⑬ MAY BE EITHER GOLD OR GXT PLATED AT MANUFACTURER'S OPTION



Copyright FCI.

www.fciconnect.com			surface 6.4 ISO 1302	tolerance std ISO 406 ISO 1101	projection A4	INCH/MM
			TOLERANCES UNLESS OTHERWISE SPECIFIED			
Dr	D.INGRAM	05/17/99	ANGULAR	0.X ±0.3	size	Scale 1.000
Eng	H.SUNDY	07/21/99	LINEAR	0.XX ±0.15	ECN	ELX-N-14748
Chr	H.SUNDY	07/21/99	0' ±2'	0.XXX ±0.05	Spec ref	
Appr	H.SUNDY	07/21/99	Product family	BERGSTIK		
rev			title		dwg no	
W	ELX-N-012227	J.Z	.100 UNSHROUDED HDR. DUAL ROW VERT. SMT.		54202	
X	ELX-N-14748	ZK			Rev. Y	
Y	ELX-N-19883	JH			sheet 1 of 3	
T	M08-0208	MHT	catalog no		CUSTOMER	
U	M08-0279	MHT				
V	N10-0438	ZJ				

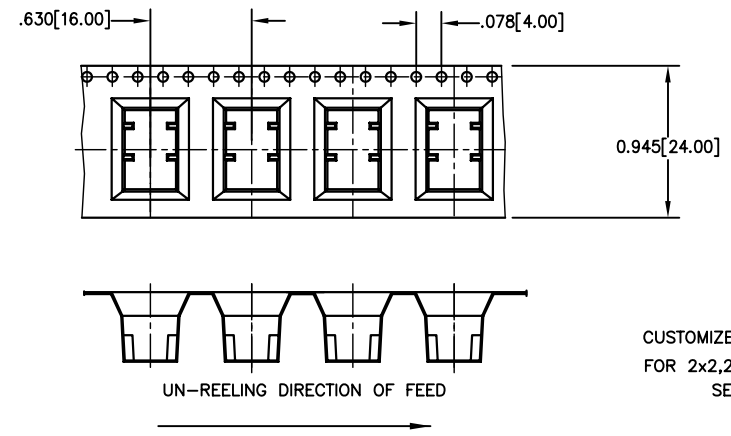
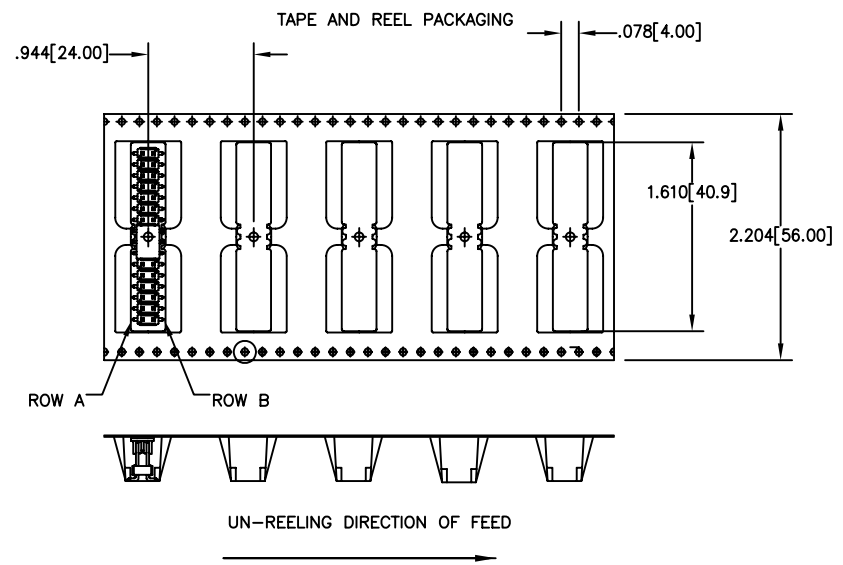
PRODUCT NUMBER
SEE TABLE



www.fciconnect.com			surface ISO 1302 <input checked="" type="checkbox"/>	tolerance std ISO 406 ISO 1101	projection 	size A4	INCH/MM
			TOLERANCES UNLESS OTHERWISE SPECIFIED				
Dr	D.JINGRAM	05/17/99	ANGULAR	LINEAR	0.X	± 0.3	Scale 1.000
Eng	H.SUNDY	07/21/99			0.XX	± 0.15	
Chr	H.SUNDY	07/21/99	0' $\pm 2'$		0.XXX	± 0.05	ECN ELX-N-14748
Appr	H.SUNDY	07/21/99	Product family		BERGSTIK		Spec ref
			title .100 UNSHROUDED HDR. DUAL ROW VERT. SMT.		dwg no 54202		Rev. Y
			catalog no		CUSTOMER		sheet 2 of 3

TAPE AND REEL PACKAGING

SIZE	LEAD STYLE 08 POST (0.230 [5.84])	LEAD STYLE 30 POST (0.318 [8.08])
2X2	YES	YES
2X3	YES	
2X4	YES	YES
2X5	YES	
2X6	YES	
2X7	YES	YES
2X8	YES	
2X9		
2X10	YES	
2X11	YES	
2X12		YES
2X13	YES	
2X14		
2X15	YES	
2X16		YES
2X17	YES	
2X18		
2X19		
2X20		



CUSTOMIZED CARRIER TAPE
FOR 2x2,2x3,2x4,2x5 SIZE.
SEE NOTE 5

Cross Reference

CORE RANGE	EXTENDED RANGE
54202-X08XXLF	95278-X01-XXLF
54202-X30XXLF	95278-X02-XXLF

www.fciconnect.com			surface ISO 1302 <input checked="" type="checkbox"/>	tolerance std ISO 406 ISO 1101	projection	INCH/MM	
			TOLERANCES UNLESS OTHERWISE SPECIFIED				
Dr	D.INGRAM	05/17/99	ANGULAR	0.X	±0.3	size A4	Scale 1,000
Eng	H.SUNDY	07/21/99		LINEAR	0.XX		
Chr	H.SUNDY	07/21/99	0° ±2'	0.XXX	±0.05	ECN	ELX-N-14748
Appr	H.SUNDY	07/21/99	Product family	BERGSTIK		Spec ref	
			title	.100 UNSHROUDED HDR. DUAL ROW VERT. SMT.		dwg no	54202
			catalog no	CUSTOMER		sheet	3 of 3
						Rev.	Y