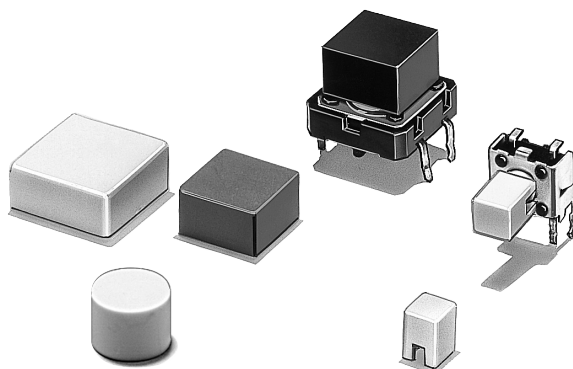


Tactile Switch Key Top

B32

Key Top Designed Specially for Projected-plunger-type B3F, B3FS and B3W Switches

- Available in a wide range of colors and sizes.
- RoHS Compliant.



Ordering Information

For B3F, B3FS and B3W Switches

Color	6 x 6 mm Switches (B3F-1000, B3F-3000, B3F-6000, B3W-1000, B3FS-1000)			12 x 12 mm Switches (B3F-4000, B3F-5000, B3W-4000, B3FS-4000)		
	4 x 4 mm Key Top	6 mm dia. Key Top	D-type Key Top	9 x 9 mm Key Top	12 x 12 mm Key Top	9.5-mm dia. Key Top
Ivory	B32-1000	B32-2000	B32-2100	B32-1200	B32-1300	B32-1600
Black	B32-1010	B32-2010	B32-2110	B32-1210	B32-1310	B32-1610
Orange	B32-1020	—	—	B32-1220	B32-1320	B32-1620
Yellow	B32-1030	—	—	B32-1230	B32-1330	B32-1630
Blue	B32-1040	—	—	B32-1240	B32-1340	—
White	B32-1060	—	—	B32-1260	B32-1360	—
Red	B32-1080	—	—	B32-1280	B32-1380	—

Specifications

■ Characteristics

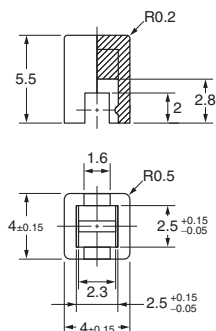
Ambient operating temperature	-25°C to 70°C (at 60% RH max.) with no icing or condensation
Ambient operating humidity	35% to 85% (at 5 to 35°C)

Dimensions

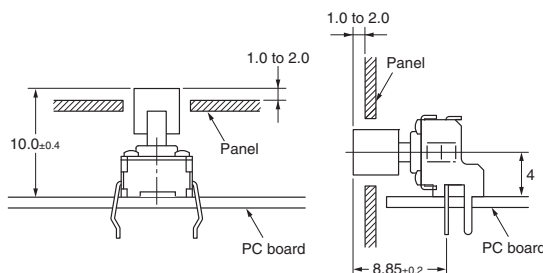
Note: Unless otherwise specified, all units are in millimeters and a tolerance of ± 0.4 mm applies to all dimensions.

■ For 6 x 6 mm Tactile Switch

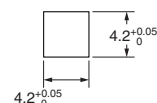
B32-10□0



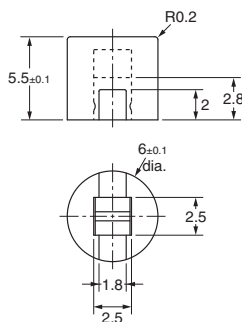
Reference Dimensions



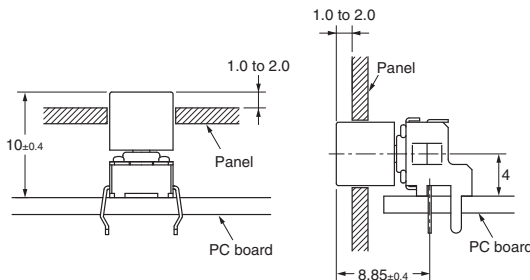
Panel Cutout



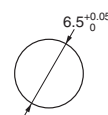
B32-2000 B32-2010



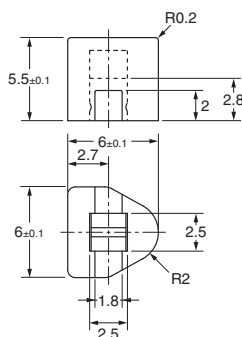
Reference Dimensions



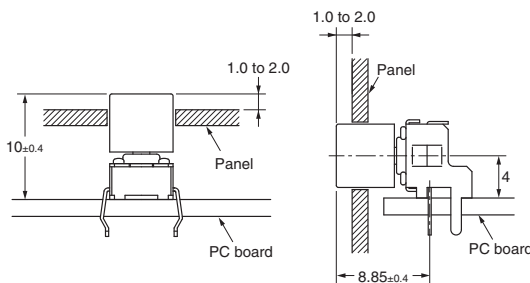
Panel Cutout



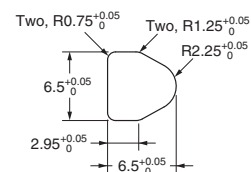
B32-2100 B32-2110



Reference Dimensions

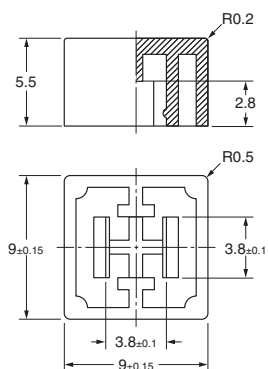


Panel Cutout

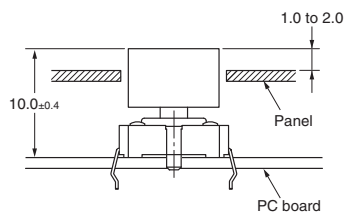


■ For 12 x 12 mm Tactile Switch

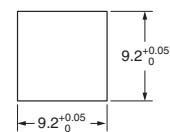
B32-12□0



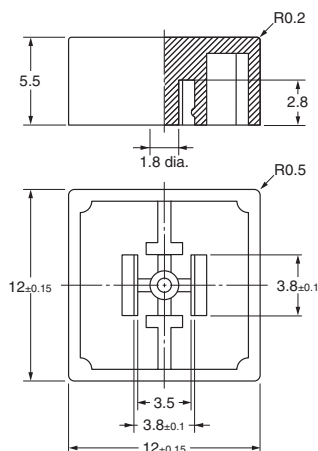
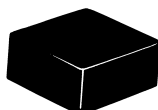
Reference Dimensions



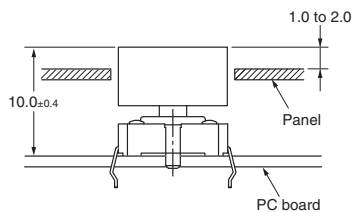
Panel Cutout



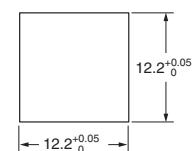
B32-13□0



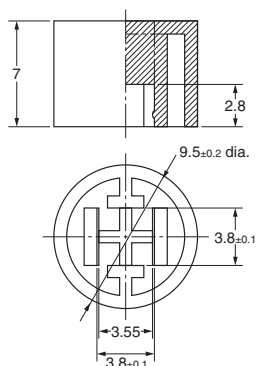
Reference Dimensions



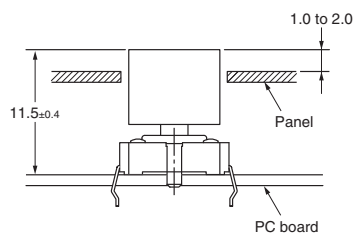
Panel Cutout



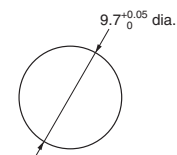
B32-16□0



Reference Dimensions



Panel Cutout



Precautions

Mount the Key Top on to the Switch after soldering, otherwise the Key Top may be deformed by the soldering heat.

All sales are subject to Omron Electronic Components LLC standard terms and conditions of sale, which can be found at http://www.components.omron.com/components/web/webfiles.nsf/sales_terms.html

ALL DIMENSIONS SHOWN ARE IN MILLIMETERS.
To convert millimeters into inches, multiply by 0.03937. To convert grams into ounces, multiply by 0.03527.

OMRON[®]

**OMRON ELECTRONIC
COMPONENTS LLC**

55 E. Commerce Drive, Suite B
Schaumburg, IL 60173

847-882-2288

OMRON ON-LINE

Global - <http://www.omron.com>

USA - <http://www.components.omron.com>

Cat. No. X303-E-1b

09/13

Specifications subject to change without notice

Printed in USA

Mouser Electronics

Authorized Distributor

Click to View Pricing, Inventory, Delivery & Lifecycle Information:

Omron:

[B32-1020](#) [B32-1010](#) [B32-1000](#) [B32-1040](#) [B32-1080](#) [B32-1210](#) [B32-1240](#) [B32-1200](#) [B32-1310](#) [B32-1300](#) [B32-1360](#) [B32-1380](#) [B32-1220](#) [B32-1230](#) [B32-1270](#) [B32-1320](#) [B32-1370](#) [B32-1600](#) [B32-1400](#) [B32-1030](#) [B32-1060](#) [B32-1280](#) [B32-1330](#) [B32-1340](#) [B32-2000](#) [B32-2010](#)