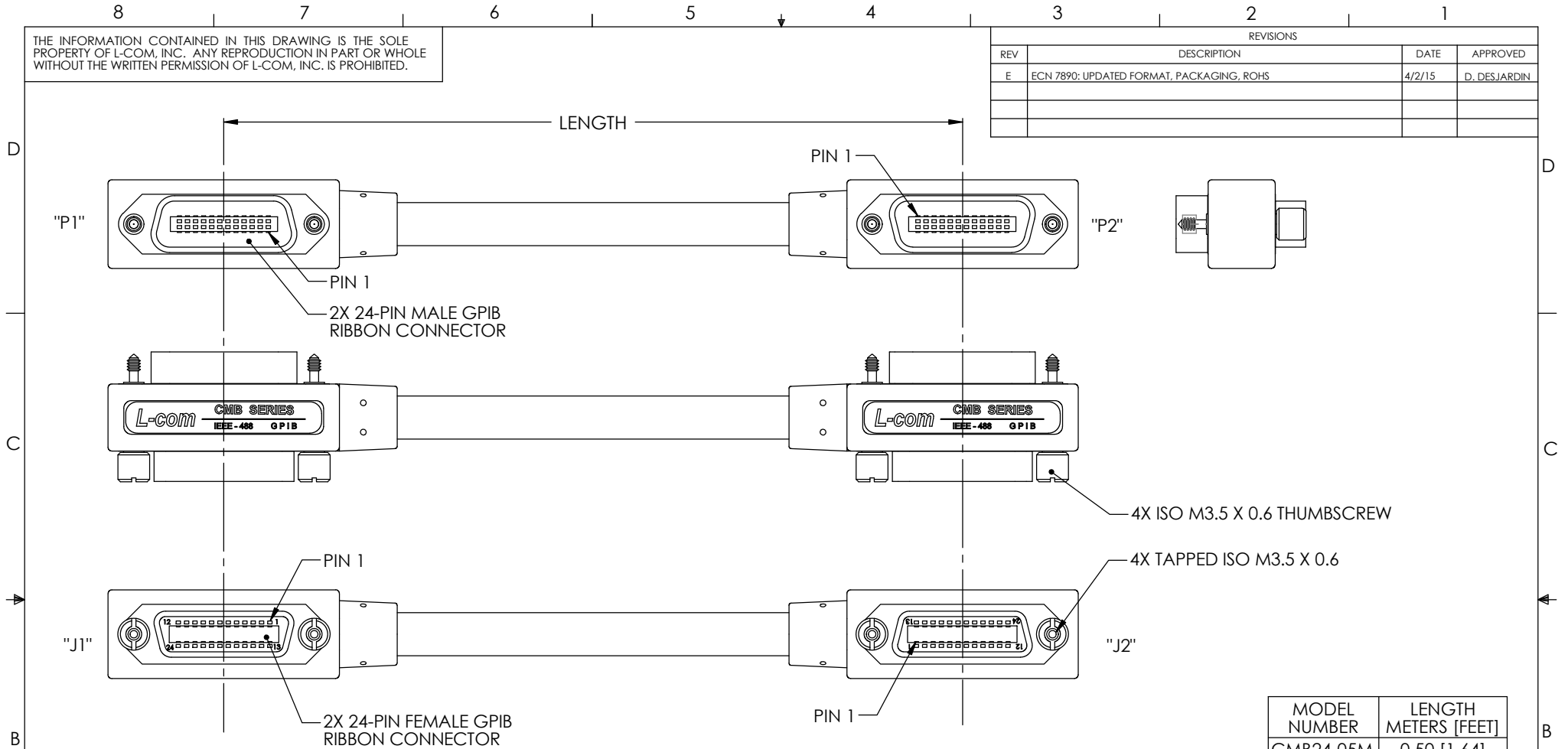


THE INFORMATION CONTAINED IN THIS DRAWING IS THE SOLE PROPERTY OF L-COM, INC. ANY REPRODUCTION IN PART OR WHOLE WITHOUT THE WRITTEN PERMISSION OF L-COM, INC. IS PROHIBITED.

| REVISIONS |   |        |              |
|-----------|---|--------|--------------|
| REV       | DESCRIPTION                               | DATE   | APPROVED     |
| E         | ECN 7890: UPDATED FORMAT, PACKAGING, ROHS | 4/2/15 | D. DESJARDIN |
|           |   |        |              |
|           |   |        |              |



| MODEL NUMBER | LENGTH METERS [FEET] |
|--------------|----------------------|
| CMB24-05M    | 0.50 [1.64]          |
| CMB24-1M     | 1.0 [3.28]           |
| CMB24-2M     | 2.0 [6.56]           |
| CMB24-3M     | 3.0 [9.84]           |
| CMB24-4M     | 4.0 [13.12]          |
| CMB24-5M     | 5.0 [16.40]          |
| CMB24-6M     | 6.0 [19.68]          |
| CMB24-8M     | 8.0 [26.24]          |

**SPECIFICATIONS:**

MEETS REQUIREMENTS OF ANSI/IEEE STD 488.1-1987.  
CABLE ASSEMBLY SHALL BE TESTED FOR CONTINUITY.

**MATERIALS:**

CABLE: U.L. STYLE 2464, TWELVE TWISTED PAIRS 26AWG STRANDED COPPER, OVERALL DOUBLE SHIELD ALUMINIZED POLYESTER FOIL PLUS BRAIDED TINNED COPPER WITH DRAIN WIRE, BEIGE PVC JACKET.

MOLDINGS: POLYVINYLCHLORIDE, BEIGE  
CONNECTOR INSULATORS: GLASS-FILLED PBT (BLUE), UL94V-0  
CONNECTOR CONTACTS: COPPER ALLOY, 30 MICROINCHES GOLD OVER NICKEL  
CONNECTOR SHELL: STAMPED STEEL OR DIE-CAST ALLOY, NICKEL PLATED  
THUMBSCREWS: ISO M3.5 X.0.6, STEEL, BLACK OXIDE FINISH

**ENVIRONMENTAL:**

OPERATING TEMPERATURE RANGE: -20 °C TO + 80 °C

⚠ CABLE ASSEMBLY SHALL BE INDIVIDUALLY PACKAGED IN ACCORDANCE WITH L-COM SPECIFICATION PS-0031.

⚠ **REGULATORY COMPLIANCE:**  
CE2011/65/EU(RoHS DIRECTIVE)


|  |  |                        |                          |  |
|--|--|------------------------|--------------------------|--|
| UNLESS OTHERWISE SPECIFIED,<br>DIMENSIONS ARE IN INCHES [mm]<br>OVERALL CABLE LENGTH TOLERANCE:<br>≤12 [305] = +1 [25] / -0<br>>12 [305] ≤60 [1524] = +2 [51] / -0<br>>60 [1524] ≤120 [3048] = +4 [102] / -0<br>>120 [3048] ≤300 [7620] = +6 [152] / -0<br>>300 [7620] = +5% / -0%<br>ALL OTHER DIMENSIONAL TOLERANCES:<br>.X = ±.2 [5.08]<br>.XX = ±.02 [1.51]<br>.XXX = ±.005 [1.13] | APPROVALS  | DATE                   |                          | 45 BEECHWOOD DRIVE<br>NORTH ANDOVER, MA<br>01845 |
|  | DRAWN BY<br>T CLARK                                      | 8/23/2001              |                          |  |
|  | CHECKED BY<br>D PARHAM                                   | 9/5/2001               |                          |  |
|  | APPROVED BY<br>R CARRICK                                 | 9/10/2001              |                          |  |
| PROJECTION<br>   | CONFIGURATION DETAILS OF UNDIMENSIONED FEATURES MAY VARY |                        | PRODUCT DESCRIPTION      |  |
| REF  | COLOR VARIATIONS MAY OCCUR                               | SIZE<br><b>A</b>       | FSCM NO.<br><b>43321</b> | DWG. NO.<br><b>CMB24</b>                         |
| SCALE: NONE  |  | CAD FILE: CMB24.SLDDRW |                          | REV.<br><b>E</b>                                 |
|  |  |                        |                          | SHEET 1 OF 2                                     |

|                       |                        |                          |                  |
|-----------------------|------------------------|--------------------------|------------------|
| CATEGORY              |                        | IEEE-488                 |                  |
| CABLE, MOLD GPIB NORM |                        |                          |                  |
| SCALE: NONE           | CAD FILE: CMB24.SLDDRW | DWG. NO.<br><b>CMB24</b> | REV.<br><b>E</b> |
| SHEET 1 OF 2          |                        |                          |                  |

THE INFORMATION CONTAINED IN THIS DRAWING IS THE SOLE PROPERTY OF L-COM, INC.. ANY REPRODUCTION IN PART OR WHOLE WITHOUT THE WRITTEN PERMISSION OF L-COM, INC. IS PROHIBITED.

WIRING TABLE

| PAIR NUMBER | J1/P1      | J2/P2      | FUNCTION       |
|-------------|------------|------------|----------------|
| 1           | 1          | 1          | DATA LINE DI01 |
|             | 14         | 14         | DATA LINE DI02 |
| 2           | 2          | 2          | DATA LINE DI03 |
|             | 3          | 3          | DATA LINE DI04 |
| 3           | 4          | 4          | DATA LINE DI05 |
|             | 13         | 13         | DATA LINE DI06 |
| 4           | 15         | 15         | DATA LINE DI07 |
|             | 16         | 16         | DATA LINE DI08 |
| 5           | 5          | 5          | EOI            |
|             | 24         | 24         | EOI RETURN     |
| 6           | 6          | 6          | DAV            |
|             | 18         | 18         | DAV RETURN     |
| 7           | 7          | 7          | NRFD           |
|             | 19         | 19         | NRDF RETURN    |
| 8           | 8          | 8          | NDAC           |
|             | 20         | 20         | NDAC RETURN    |
| 9           | 9          | 9          | IFC            |
|             | 21         | 21         | IFC RETURN     |
| 10          | 10         | 10         | SRQ            |
|             | 22         | 22         | SRQ RETURN     |
| 11          | 11         | 11         | ATN            |
|             | 23         | 23         | ATN RETURN     |
| 12          | 17         | 17         | REN            |
|             | 24         | 24         | REN RETURN     |
| DRAIN WIRE  | 12 & SHELL | 12 & SHELL | SHIELD         |

|   |              |  |              |
|---|--------------|--|--------------|
|  |              | 45 BEECHWOOD DRIVE<br>NORTH ANDOVER, MA<br>01845 |              |
| CATEGORY  |              |  |              |
| IEEE-488  |              |  |              |
| PRODUCT DESCRIPTION   |              |  |              |
| CABLE, MOLD GPIB NORM   |              |  |              |
| SIZE  | FSCM NO.     | DWG. NO.   | REV.         |
| <b>A</b>  | <b>43321</b> | <b>CMB24</b>                                     | <b>E</b>     |
| SCALE: NONE   |              | CAD FILE: CMB24.SLDDRW                           | SHEET 2 OF 2 |