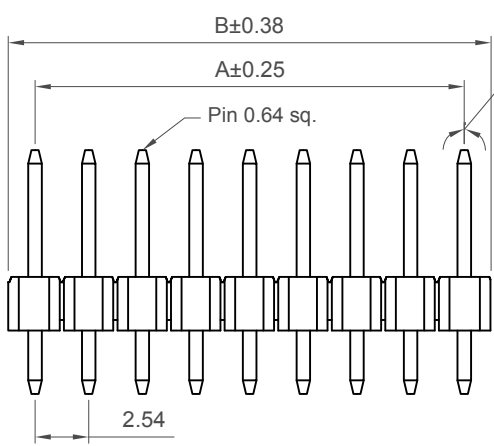
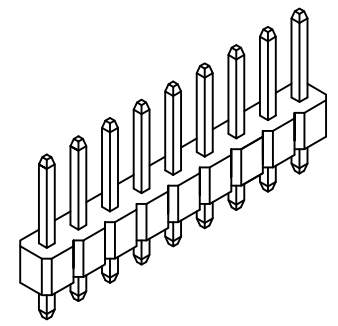
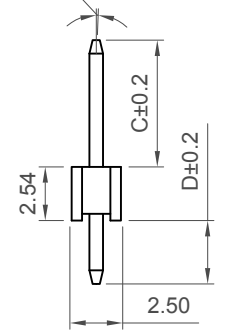


Recommended PCB Layout



2° Max. Sway & Toe
(Either Direction At The top)



Number of Contacts	Dimensions	
	A	B
2	2.54	5.08
3	5.08	7.62
4	7.62	10.16
5	10.16	12.70
6	12.70	15.24
7	15.24	17.78
8	17.78	20.32
9	20.32	22.86
10	22.86	25.40
11	25.40	27.94
12	27.94	30.48
13	30.48	33.02
14	33.02	35.56
15	35.56	38.10
16	38.10	40.64
17	40.64	43.18
18	43.18	45.72
19	45.72	48.26
20	48.26	50.80
21	50.80	53.34
22	53.34	55.88
23	55.88	58.42
24	58.42	60.96
25	60.96	63.50
26	63.50	66.04
27	66.04	68.58
28	68.58	71.12
29	71.12	73.66
30	73.66	76.20
31	76.20	78.74
32	78.74	81.28
33	81.28	83.82
34	83.82	86.36
35	86.36	88.90
36	88.90	91.44
37	91.44	93.98
38	93.98	96.52
39	96.52	99.06
40	99.06	101.60

Specifications 规格

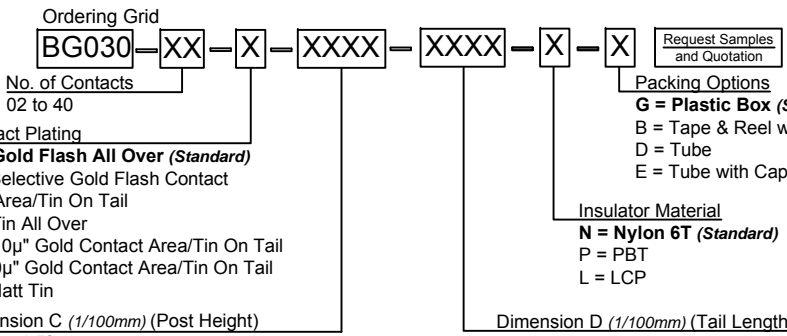
Insulator 绝缘体:
 Standard 标准: Polyamide, Nylon 6T, UL94V-0
 Options 可选: Polyester, LCP, UL94V-0
 Polyester, PBT, UL94V-0
 Contact 接触: Copper Alloy

Plating 电镀
 Contact 接触: See Ordering Grid

Electrical 电气
 Current Rating 电流额定值: 3 Amp
 Contact Resistance 接触电阻值: 20 mΩ max.
 Insulation Resistance 绝缘电阻值: 1000 MΩ min.
 Dielectric Withstand Voltage 寒耐电压: 600 V AC

Mechanical & Environmental 机械 & 环境
 Operating Temperature 工作温度: -40°C to +105°C
 Soldering Process 可焊性
 Nylon 6T (Standard标准物料)
 IR Reflow 回流焊: 260°C for 10 sec.
 Wave 波峰焊: 230°C for 5-10 sec.
 Manual Solder 人工焊接: 350°C for 3-5sec
 LCP (Option 可选物料)
 IR Reflow 回流焊: 260°C for 10 sec.
 Wave 波峰焊: 250°C for 5-10 sec
 Manual Solder 人工焊接: 350°C for 3-5 sec
 PBT (Option 可选物料)
 Manual Solder 人工焊接: 330°C for 3-5sec
 (Not suitable for hi-temp process 不适合高温处理)

Mates with 配套之母座
 (Subject to Pin Length 在端子长度适合的条件下)
 BG090 BG095 BG096 BG100 BG110 BG115
 BG125 BG130 BG135 BG145 BG205



Dimension C (1/100mm) (Post Height)
0450 = 4.50mm (Standard)
0650 = 6.50mm (Standard)
 Or specify custom Post Height
 e.g. 0250 = 2.50mm

Dimension D (1/100mm) (Tail Length)
0300 = 3.00mm (Standard)
 Or specify custom Tail Length
 e.g. 0250 = 2.50mm

Part Number		Product Description	
BG030		2.54mm pitch Pin Header	
Drawing Date		Single Row, Through-Hole, Vertical	
1st November 2006			
By	AJO	Tolerances (Except as Noted)	Units:
Detail	Packing Option	Length X. ± 0.30 X.X ± 0.20 X.XX ± 0.15	Metric (mm)
Revision	G1	Angle X.X° ± 5° X.X° ± 2° X.XX° ± 1°	
Date	06/02/15	X.XXX ± 0.10 X.XXX° ± 0.5°	3rd Angle Projection

GCT
 Global Connector Technology
 www.gct.co

This drawing is confidential and copyright of Global Connector Technology, Ltd (GCT). This drawing must not be copied or disclosed without written consent. E & OE

Not to Scale Drawn By LYH Sheet No. 1/1