

DIN Connector, Plug, 4-pole, solder terminal



### Description

- Solder terminal:  
for cable mounting
- DIN Plug: 4-pole, straight

### Weblinks

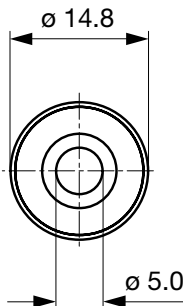
[pdf-datasheet](#), [html-datasheet](#), [General Product Information](#), [RoHS](#), [CHINA-RoHS](#), [REACH](#), [Mating Connectors](#), [e-Shop](#), [SCHURTER-Stock-Check](#), [Distributor-Stock-Check](#)

### Technical Data

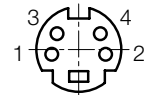
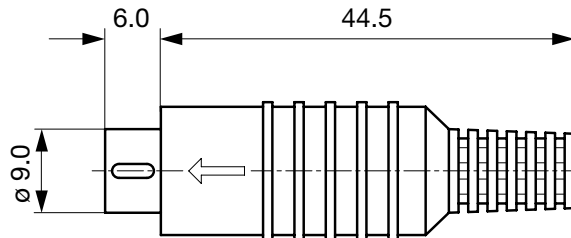
Diameter	9.0 mm
Number of Poles	4-pole
Ratings DC	2 A / 12 VDC
Ratings AC	1 A / 100 VAC
Dielectric Strength	250 VAC
Insulation Resistance	> 50 MΩ @ 250 VDC

Allowable Operation Temp.	-20 °C to 70 °C
Terminal	solder terminal silver plated
Lifetime	5000 Insertions

### Dimensions



Cable diameter max. 5.0 mm



### All Variants

Product group	Diameter [mm]	Number of Poles	Terminal	Order Number
DIN Plug/Socket	9.0	4-pole	solder terminal	4850.1410

Most Popular.

Availability for all products can be searched real-time: <http://www.schurter.com/en/Stock-Check/Stock-Check-SCHURTER>

**Packaging unit** 100 Pcs

## Mating Outlets/Connectors

## Category / Description

[DIN Plug/Socket Overview complete](#)

DIN Connector, Socket, 4-pole, solder terminals for PCB	4850.2400
---	-----------

DIN Connector, Socket, 4-pole, solder terminals for PCB	4850.2410
---	-----------

DIN Connector, Inline Socket, 4-pole, solder terminal	4850.3400
---	-----------

[DIN Plug/Socket further types to 4850 DIN-Stecker, verschiedene](#)