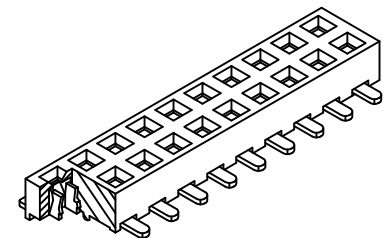
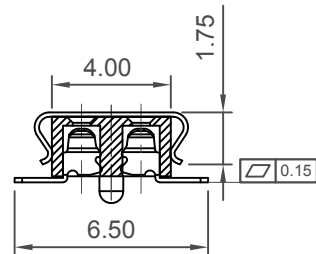
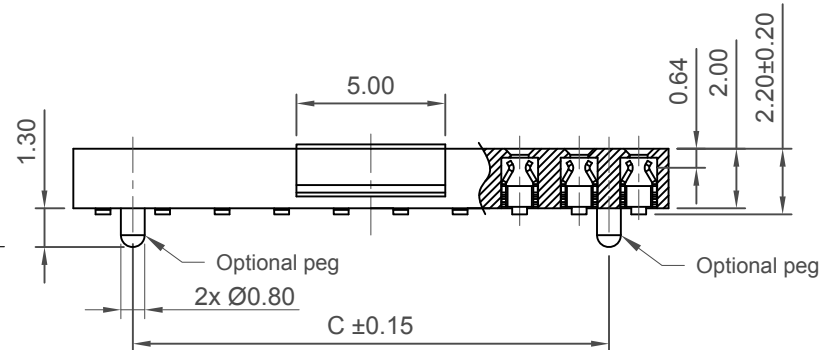
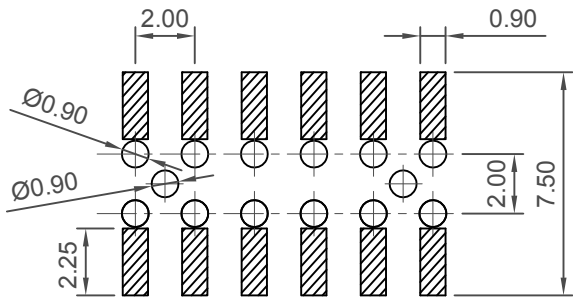
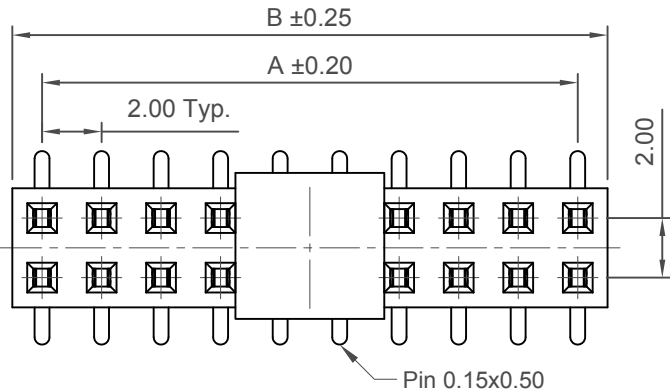


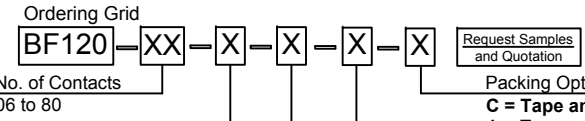
H
G
F
E
D
C
B
A



CONTACTS	DIMENSIONS		
	A	B	C
6	4.0	6.0	2.0
8	6.0	8.0	4.0
10	8.0	10.0	6.0
12	10.0	12.0	8.0
14	12.0	14.0	10.0
16	14.0	16.0	12.0
18	16.0	18.0	14.0
20	18.0	20.0	16.0
22	20.0	22.0	18.0
24	22.0	24.0	20.0
26	24.0	26.0	22.0
28	26.0	28.0	24.0
30	28.0	30.0	26.0
32	30.0	32.0	28.0
34	32.0	34.0	30.0
36	34.0	36.0	32.0
38	36.0	38.0	34.0
40	38.0	40.0	36.0
42	40.0	42.0	38.0
44	42.0	44.0	40.0
46	44.0	46.0	42.0
48	46.0	48.0	44.0
50	48.0	50.0	46.0
52	50.0	52.0	48.0
54	52.0	54.0	50.0
56	54.0	56.0	52.0
58	56.0	58.0	54.0
60	58.0	60.0	56.0
62	60.0	62.0	58.0
64	62.0	64.0	60.0
66	64.0	66.0	62.0
68	66.0	68.0	64.0
70	68.0	70.0	66.0
72	70.0	72.0	68.0
74	72.0	74.0	70.0
76	74.0	76.0	72.0
78	76.0	78.0	74.0
80	78.0	80.0	76.0

Specifications 规格

Current Rating 电流额定值: 2 Amp
 Insulator Resistance 绝缘电阻值: 1000 MΩ min.
 Contact Resistance 接触电阻值: 20 mΩ max.
 Dielectric Withstanding 耐电压: AC 500 V
 Operating Temperature 工作温度: -40°C to +105°C
 Contact Material 端子物料: Phosphor Bronze
 Insulator Material 绝缘体物料:
 Standard 标准物料: Polyamide 聚酰胺, Nylon 6T, UL 94V-0
 Options 可选物料: Polyester 聚酯, LCP, UL 94V-0
 Soldering Process 可焊性:
 Nylon 6T (Standard 标准物料)
 IR Reflow 回流焊: 260°C for 10 sec.
 Wave 波峰焊: 230°C for 5-10 sec.
 Manual Solder 人工焊接: 350°C for 3-5 sec
 LCP (Option 可选物料)
 IR Reflow 回流焊: 260°C for 10 sec.
 Wave 波峰焊: 250°C for 5-10 sec.
 Manual Solder 人工焊接: 350°C for 3-5 sec
 Mates with 配套之母座 (Subject to pin length 在端子长度适合的条件下):
 BF030 BF045 BF050 BF055 BF060
 BF135 BF140 BF145



Ordering Grid
 BF120-XX-X-X-X-X
 No. of Contacts: 06 to 80
 Request Samples and Quotation
 Packing Options:
 C = Tape and Reel with Film (Standard)
 A = Tape and Reel
 B = Tape and Reel with Cap
 D = Tube
 E = Tube and Cap
 F = Tube and Film
 Insulator Material:
 N = Nylon 6T (Standard)
 L = LCP
 Contact Plating:
 A = Gold Flash All Over (Standard)
 C = Tin All Over
 N = 30u" gold on contact area, gold flash on tail
 P = 10u" gold on contact area, gold flash on tail
 Locating Peg:
 0 = No Peg
 1 = With Peg

Part Number		Product Description	
BF120		2.00mm Pitch Socket	
Drawing Date		Dual Row, Surface Mount, Dual Entry	
31st October 2007			
By	AJO	Tolerances (Except as Noted)	Units:
Detail	BF120	Length	Metric (mm)
Revision	G	Angle	
Date	01/12/14	X. ± 0.30	X.° ± 5°
		X.X ± 0.20	X.X° ± 2°
		X.XX ± 0.15	X.XX° ± 1°
		X.XXX ± 0.10	X.XXX° ± 0.5°

GCT
 Global Connector Technology
 www.gct.co

Not to Scale
 Drawn By LYH
 Sheet No. 1/1