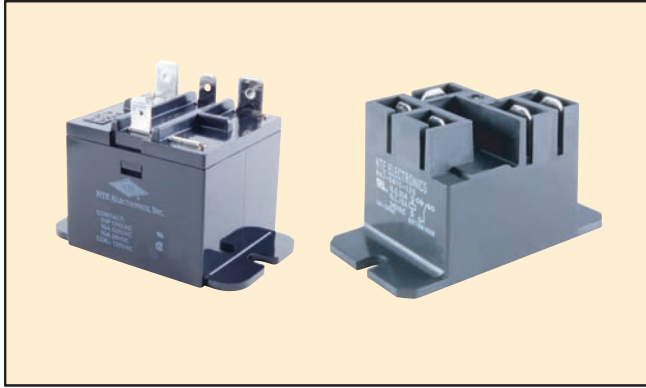


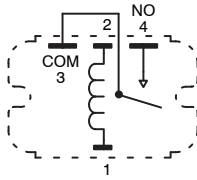
## Features

- Miniature Relay Ideal for Switching Motor Load Lamp Load, Heater, etc.
- Creepage Distance of more than .08"
- Upper Mounting Bracket Type for Easy Wiring and Mounting
- .187" (4.75mm) Quick Connect Coil Terminals
- .250" (6.35mm) Quick Connect Terminals for Load



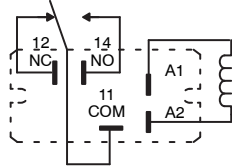
SPST-NO, 1 Form "A"

SPDT, 1 Form "C"



\* Pin5 (NC) is missing on all SPST-NO devices.

SPDT, 1 Form "C"  
R47-5A15-120



AC OPERATED						
NTE TYPE No.	Nom. Voltage	Contact Arr.	Coil Res. Ohms (Typ)	Approx. Nom. Power	Max. Contact Cur. @ 24VDC or 220VAC	Diag No.
R47-1A15-24	24VAC	SPST-NO	-	1.3VA	15A	D43a
R47-1A15-120	120VAC	SPST-NO	-	1.3VA	15A	D43a
R47-5A15-24	24VAC	SPDT	-	1.3VA	15A	D43a
R47-5A15-120	120VAC	SPDT	-	1.6VA	20A/10A *	D43b

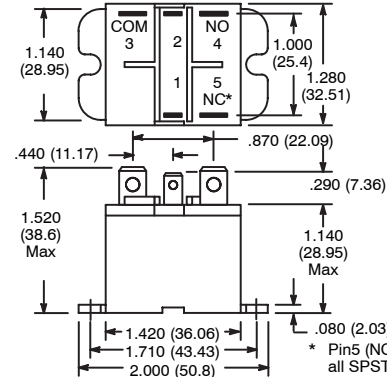
\* 250VAC, Resistive, 25°C

# R47 Series



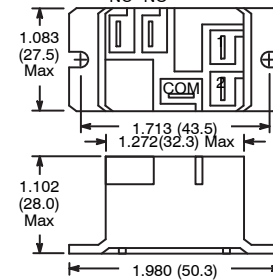
## General Purpose, 15 Amp, AC SPST-NO & SPDT Relay for HVAC, Appliance Controls, and Copiers.

### D43a



\* Pin5 (NC) is missing on all SPST-NO devices.

### D43b



## Electrical Specifications

### Contact

**Rating:** 15 Amp @ 28VDC (resistive load)  
15 Amp @ 120VAC (inductive load)  
10 Amp @ 240VAC (inductive load)  
1HP @ 120VAC  
20A/10A, 250VAC (resistive load) **R47-5A15-120 ONLY**

**Material:** AgCdO  
AgSnOInO **R47-5A15-120 ONLY**

**Resistance:** 30mΩ (max.)  
75mΩ (at 1A at 5VDC or 12VAC) **R47-5A15-120 ONLY**

### Coil

**Coil Voltages:** See Chart

**Pick-up Voltages:** 80% of nominal Coil Vltg.

**Drop-out Voltages:** 30% of rated voltage (min.)

**Resistance:** See Chart

### Operational Characteristics

**Timing Values:** . . . . **Operate Time:** 20 mS (max.)

. . . . **Operate Time:** 15 mS (max.) **R47-5A15-120**

### Insulation Characteristics

**Dielectric Strength:** 2000VAC, 50/60Hz for 1 minute  
(1000VAC between open contacts)  
2500V<sub>rms</sub> **R47-5A15-120 ONLY**  
(1500VAC between open contacts)

**Insulation Resistance:** 100MΩ min. (at 500VDC)  
1MΩ min. **R47-5A15-120 ONLY**

### Environmental Characteristics

**Operating:** -10°C to +55°C

### Life

**Mechanical:** 10,000,000 operations min  
5,000,000 operations min **R47-5A15-120 ONLY**

### Weight

**Std:** 1.55 oz (44 grams) approx

**Std:** 1.16 oz (33 grams) approx **R47-5A15-120 ONLY**