

# R95-115



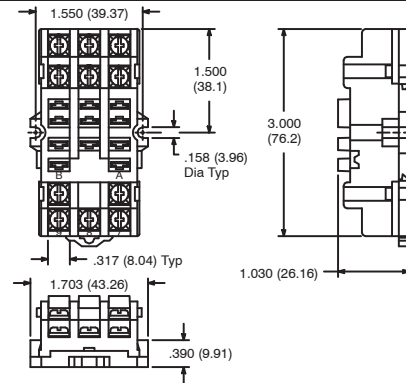
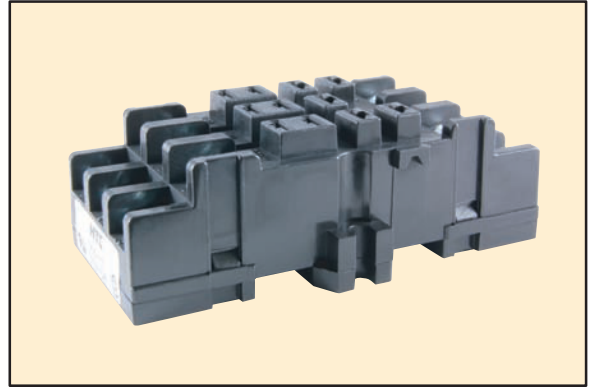
## 11-Pin Square Base Socket

### Features

- Panel/Surface Mount
- DIN Rail Mountable
- Pressure Clamp Screws

### Electrical Rating:

300 Volts, 10 Amps



# R95-116



## 11-Pin Square Base Socket

### Features

- Panel Mount
- Solder Terminals
- Accepts .187" Blade Terminals
- SPDT, DPDT and 3PDT Applications

### Electrical Rating:

300 Volts, 10 Amps

