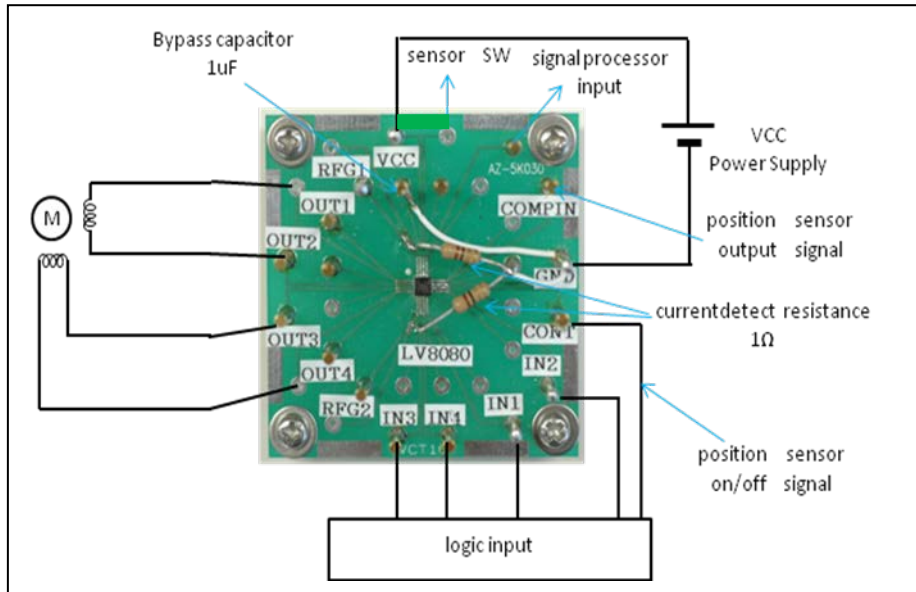
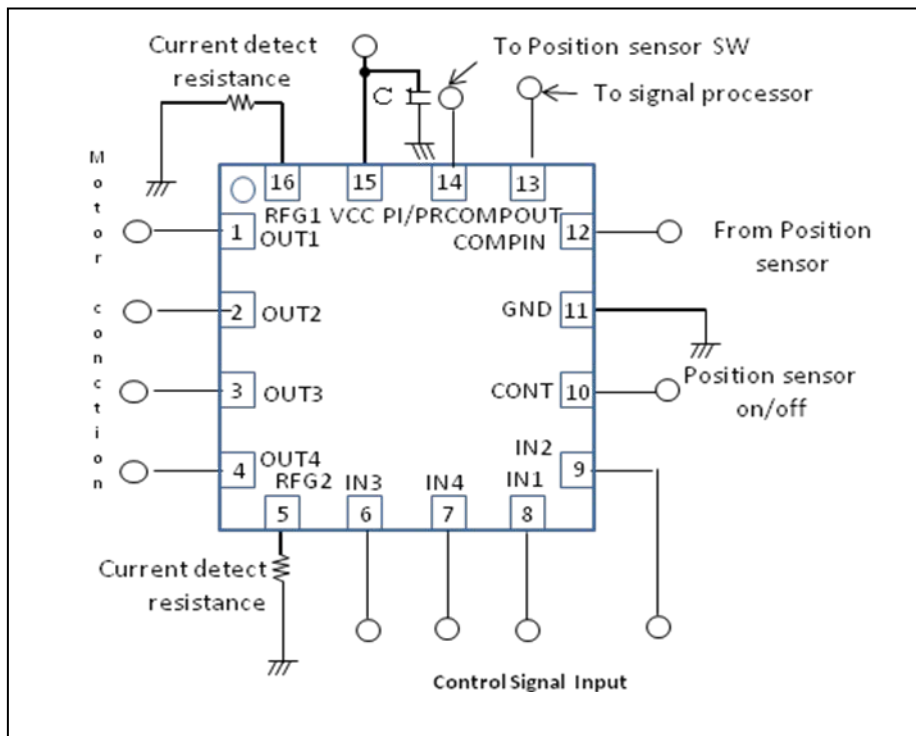


Test Procedure for the LV8080LPGEVB Evaluation Board

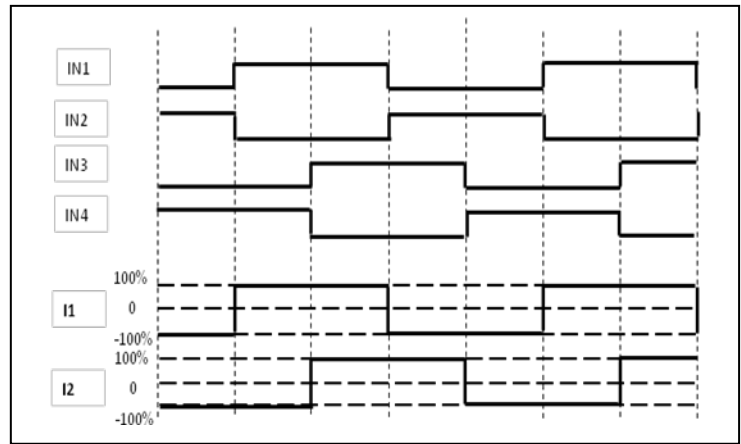


(Circuit diagram of the evaluation board)



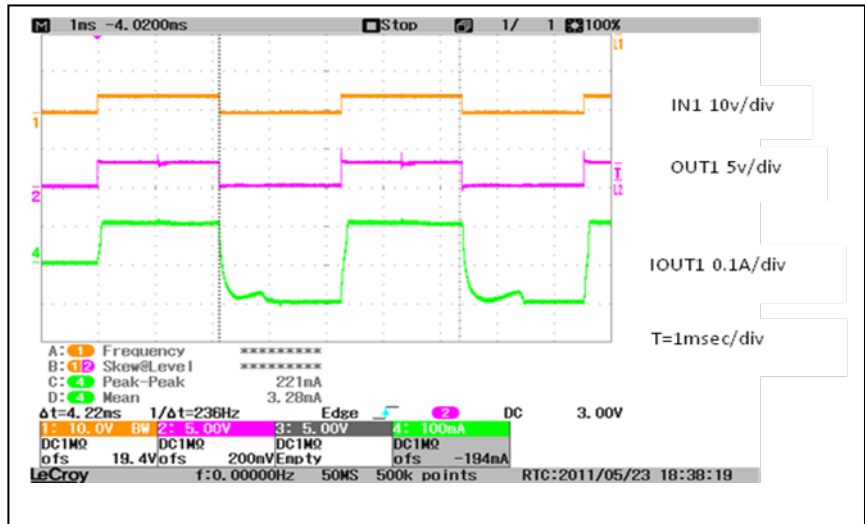
Testing Procedure:

1. Connect a stepping motor with OUT1, OUT2, OUT3 and OUT4.
2. Connect the motor power supply with the terminal VCC. Connect the GND line with the terminal GND.
3. Stepping motor drives it in 2 phase excitation by inputting a signal such as follows into IN1, IN2, IN3 and IN4.
4. Check the stepping motor is rotating.
5. Check the waveform of the output voltage and current. (Please refer to the following waveform example.)

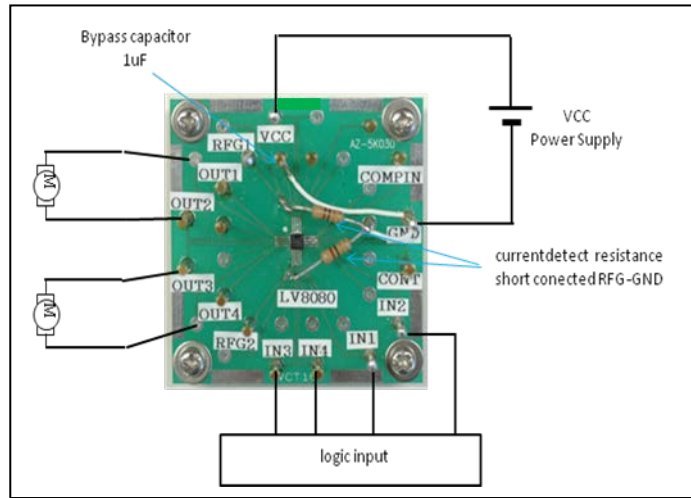


2 phase excitation timing chart

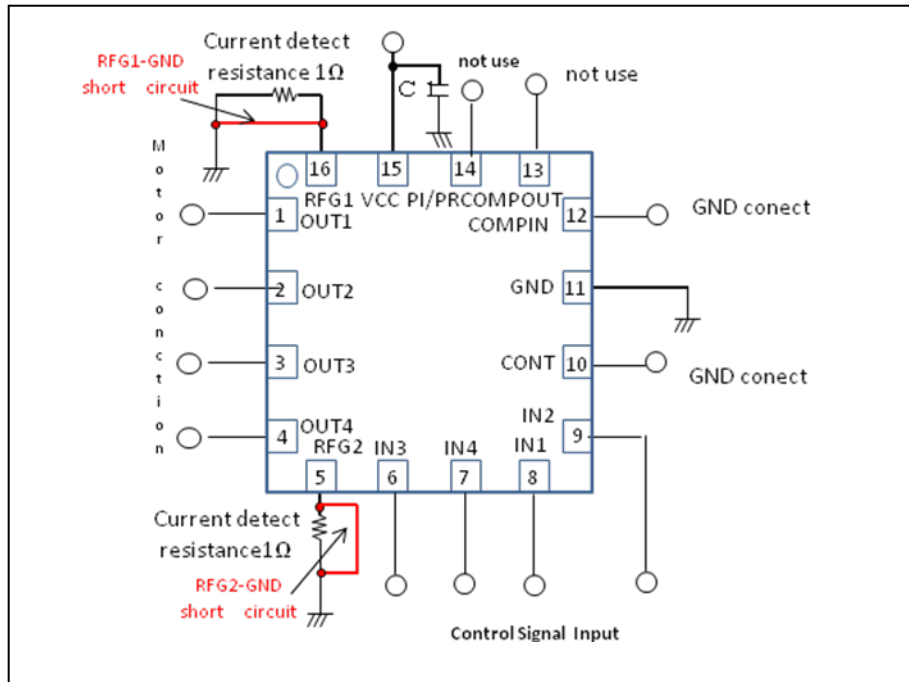
- Stepping motor driving waveform example



For DC motor:



(Circuit diagram of the evaluation board)



Testing Procedure:

1. Connect a DC motor with OUT1, OUT2, or OUT3 and OUT4.
2. Connect the motor power supply with the terminal VCC.
3. Connect the GND line with the terminal GND.
4. DC motor drives it by inputting a signal such as follows into IN1, IN2, IN3 and IN4.
5. Check that the stepping motor is rotating.

