

IEC Appliance Inlet C14 with Filter, Fuseholder 1- or 2-pole, Line Switch 2-pole

Plug removal necessary for fuse replacement



KMF: With shield and line filter

Order required accessories separately



### Description

- Panel Mount:  
Snap-in version from front side
- 4 Functions:  
Appliance Inlet Protection class I, Line Switch 2-pole, Fuseholder for fuse-links 5 x 20 mm 1- or 2-pole, Line filter in standard and medical version
- Quick connect terminals 4.8 x 0.8 mm

### Approvals

- VDE Certificate Number: 40035743
- UL File Number: E72928
- CCC File Number: 2009010204326571

### Characteristics

- Ultra-compact design. Small dimensions in front of and behind the panel
- All single elements are already wired
- For added safety "Extra-Safe" fuse drawers are available
- Innovative EMC-shielding with flexible steel segments for an excellent contact
- Suitable for use in equipment according to IEC/UL 60950
- Suitable for use in medical equipment according to IEC/UL 60601-1

### Other versions on request

- Fuse drawer 1-pole, plus spare fuse case
- Fuse drawer 2-pole, with shorting bar
- Other rocker marking

### References

- Alternative: version without line filter [KM](#)
- Alternative: version for screw mounting [DD12](#)
- Alternative: Standard version

### Weblinks

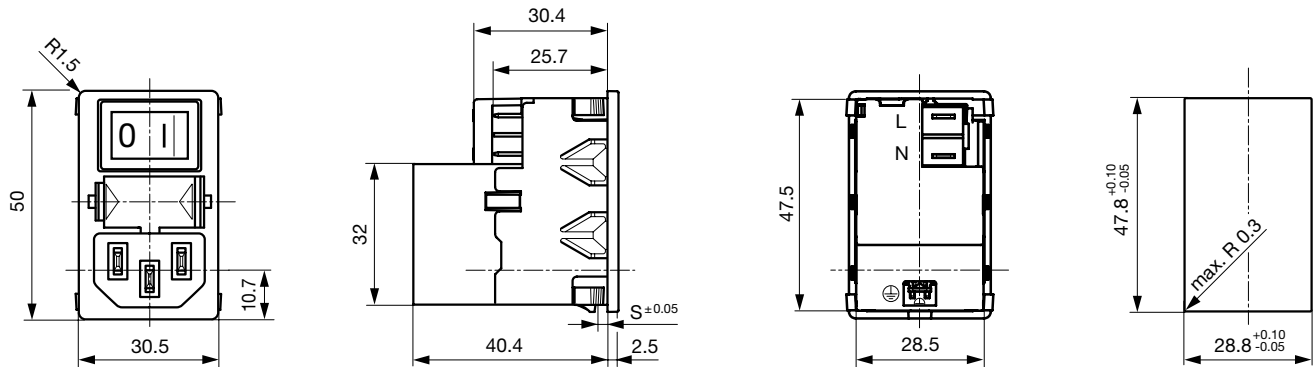
[pdf-datasheet](#), [html-datasheet](#), [General Product Information](#), [RoHS](#), [CHINA-RoHS](#), [REACH](#), [Mating Connectors](#), [e-Shop](#), [SCHURTER-Stock-Check](#), [Distributor-Stock-Check](#), [Accessories](#), [Wire Harnessing](#)

### Technical Data

Ratings IEC	1 - 10A @ Ta 40 °C / 250VAC; 50Hz
Ratings UL/CSA	1 - 10A @ Ta 40 °C / 125VAC; 60Hz
Leakage Current	standard < 0.5mA (250V / 60Hz) medical < 5 µA (250 V / 60 Hz)
Dielectric Strength	> 1.7kVDC between L-N > 2.7kVDC between L/N-PE Test voltage (2sec)
Allowable Operation Temp.	-25 °C to 85 °C
Climatic Category	25/085/21 acc. to IEC 60068-1
Degree of Protection	from front side IP 40 acc. to IEC 60529
Protection Class	Suitable for appliances with protection class I acc. to IEC 61140
Terminal	Quick connect terminals 4.8 x 0.8 mm
Panel Thickness s	Snap-in: 1/1.5/2/2.5 mm (all steps with one variant)
Material: Housing	Thermoplastic, black, UL 94V-0

Appliance-Inlet/-Outlet	C14 acc. to IEC 60320, UL 498, CSA C22.2 no. 42 (for cold conditions) pin-temperature 70 °C, 10A, Protection Class I
Fuseholder	1 or 2 pole, Shocksafe category PC2 acc. to IEC 60127-6, for fuse-links 5 x 20mm
Rated Power Acceptance @ Ta 23 °C	5 x 20: 2W (1 pole)/ 1.4W (2-pole) per pole
Power Acceptance @ Ta > 23°C	Admissible power acceptance at higher ambient temperature see derating curves
Line Switch	2-pole, non-illuminated, acc. to IEC 61058-1 <a href="#">Technical Details</a>
Line Filter	Standard and Medical Version, IEC 60939, UL 1283, CSA C22.2 no. 8 <a href="#">Technical Details</a>
MTBF	> 1'800'000h acc. to MIL-HB-217 F

Dimension

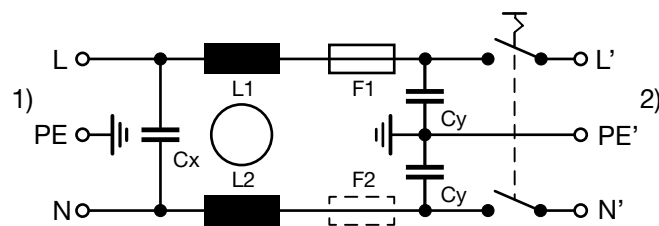


Technical Data of Filter-Components

Rated Current [A]	Filter-Type	Inductances L [mH]	Capacitance CX [nF]	Capacitance CY [nF]	R [MΩ]
1	Standard Version	2 x 11	47	2.2	-
2	Standard Version	2 x 4	47	2.2	-
4	Standard Version	2 x 1.6	47	2.2	-
6	Standard Version	2 x 0.7	47	2.2	-
10	Standard Version	2 x 0.4	47	2.2	-
1	Medical Version (M5)	2 x 11	47	-	1
2	Medical Version (M5)	2 x 4	47	-	1
4	Medical Version (M5)	2 x 1.6	47	-	1
6	Medical Version (M5)	2 x 0.7	47	-	1
10	Medical Version (M5)	2 x 0.4	47	-	1

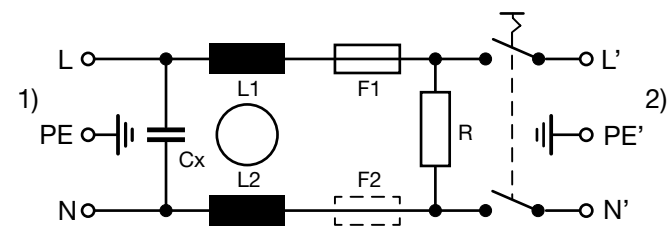
Diagrams

Standard version



1) Line  
2) Load

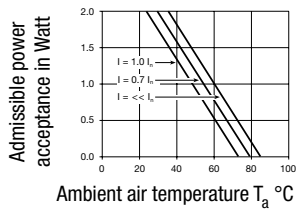
Medical version



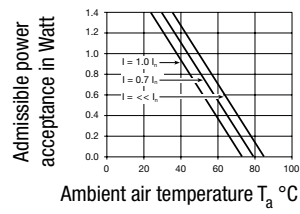
1) Line  
2) Load

Derating Curves

1-pole



2-pole

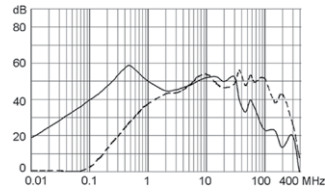


Attenuation Loss

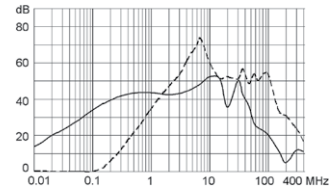
--- differential mode    \_\_\_\_ common mode

Standard version

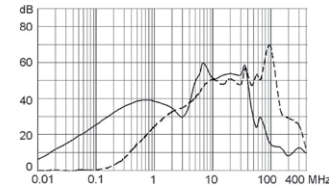
1 A



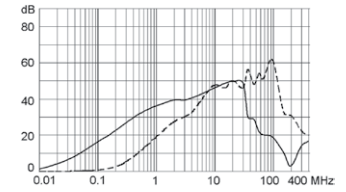
2 A



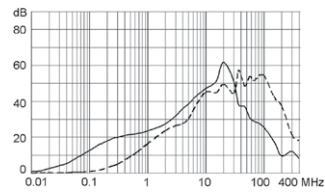
4 A



6 A

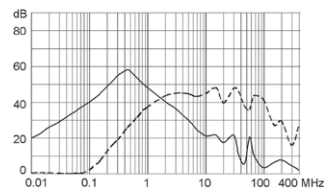


10 A

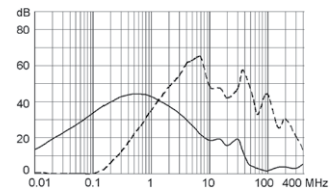


Medical version (M5)

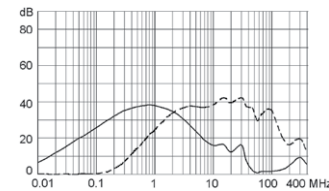
1 A



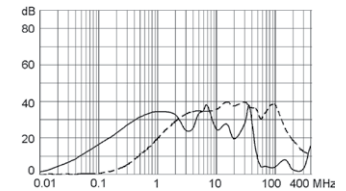
2 A



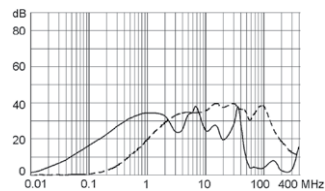
4 A



6 A



10 A



All Variants

Rated Current [A]	Filter-Type	Fuseholder	Line Switch	Illumination	Order Number	
1	Standard Version	1-pole	2-pole	non-illuminated	<a href="#">KMF1.1211.11</a>	■
2	Standard Version	1-pole	2-pole	non-illuminated	<a href="#">KMF1.1221.11</a>	■
4	Standard Version	1-pole	2-pole	non-illuminated	<a href="#">KMF1.1241.11</a>	■
6	Standard Version	1-pole	2-pole	non-illuminated	<a href="#">KMF1.1261.11</a>	■
10	Standard Version	1-pole	2-pole	non-illuminated	<a href="#">KMF1.1291.11</a>	■
1	Standard Version	2-pole	2-pole	non-illuminated	<a href="#">KMF1.1111.11</a>	■
2	Standard Version	2-pole	2-pole	non-illuminated	<a href="#">KMF1.1121.11</a>	■
4	Standard Version	2-pole	2-pole	non-illuminated	<a href="#">KMF1.1141.11</a>	■
6	Standard Version	2-pole	2-pole	non-illuminated	<a href="#">KMF1.1161.11</a>	■
10	Standard Version	2-pole	2-pole	non-illuminated	<a href="#">KMF1.1191.11</a>	■
1	Medical Version (M5)	1-pole	2-pole	non-illuminated	<a href="#">KMF1.1213.11</a>	
2	Medical Version (M5)	1-pole	2-pole	non-illuminated	<a href="#">KMF1.1223.11</a>	
4	Medical Version (M5)	1-pole	2-pole	non-illuminated	<a href="#">KMF1.1243.11</a>	
6	Medical Version (M5)	1-pole	2-pole	non-illuminated	<a href="#">KMF1.1263.11</a>	
10	Medical Version (M5)	1-pole	2-pole	non-illuminated	<a href="#">KMF1.1293.11</a>	
1	Medical Version (M5)	2-pole	2-pole	non-illuminated	<a href="#">KMF1.1113.11</a>	■
2	Medical Version (M5)	2-pole	2-pole	non-illuminated	<a href="#">KMF1.1123.11</a>	■
4	Medical Version (M5)	2-pole	2-pole	non-illuminated	<a href="#">KMF1.1143.11</a>	■
6	Medical Version (M5)	2-pole	2-pole	non-illuminated	<a href="#">KMF1.1163.11</a>	■
10	Medical Version (M5)	2-pole	2-pole	non-illuminated	<a href="#">KMF1.1193.11</a>	■

■ Most Popular.

Availability for all products can be searched real-time: <http://www.schurter.com/en/Stock-Check/Stock-Check-SCHURTER>

Packaging unit 20 Pcs

Required Accessory

Description

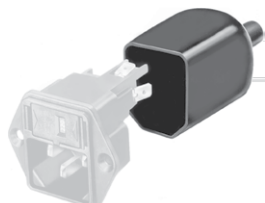


**Fusedrawer 2**  
Fusedrawer für Fuse Links 5x20 mm, with or without Voltage Selector Insert

Accessories



**Wire Harness**  
Wire harness for SCHURTER products



**Assorted Covers**  
Rear Cover



Cord retaining kits  
 Cord retaining strain relief

## Mating Outlets/Connectors

### Category / Description



#### Appliance Outlet Overview complete

IEC Appliance Outlet F, Screw-on Mounting, Front Side, Solder Terminal	4787
IEC Appliance Outlet F, Snap-in Mounting, Front Side, Solder or Quick-connect Terminal	4788
IEC Appliance Outlet F or H, Screw-on Mounting, Front Side, Solder, PCB or Quick-connect Terminal	5091

[Appliance Outlet further types to KMF](#)

#### Connector Overview complete



IEC Connector C13, Rewireable, Straight	4782
IEC Connector C13, Rewireable, Straight	4022
IEC Connector C13, Rewireable, Angled	4785
IEC Connector C13, Rewireable, Angled	4300-06
IEC Connector C13, Rewireable, Angled	4012

[Connector further types to KMF](#) ...