

**PLEASE CHECK WWW.MOLEX.COM FOR LATEST PART INFORMATION**

**Part Number:** [34897-8121](#)  
**Status:** **Active**  
**Overview:** [Mini50™ Connection Systems](#)  
**Description:** Mini50™ Unsealed, Dual Row, Right-Angle Header, 12 Circuit, Polarization Option B, Gray, Tape and Reel

**Documents:**

[3D Model](#)  
[Drawing \(PDF\)](#)

[RoHS Certificate of Compliance \(PDF\)](#)

**General**

Product Family	PCB Headers
Series	<a href="#">34897</a>
Application	Power, Signal, Wire-to-Board
Overview	<a href="#">Mini50™ Connection Systems</a>
Product Name	Mini50™
UPC	887191297477

**Physical**

Breakaway	No
Circuits (Loaded)	12
Circuits (maximum)	12
Color - Resin	Gray
First Mate / Last Break	No
Glow-Wire Compliant	No
Guide to Mating Part	No
Keying to Mating Part	Yes
Lock to Mating Part	Yes
Material - Metal	Brass
Material - Plating Mating	Tin
Material - Plating Termination	Nickel
Material - Resin	Polyester Alloy
Net Weight	2.635/g
Number of Rows	2
Orientation	Right Angle
PC Tail Length	2.90mm
PCB Locator	Yes
Packaging Type	Embossed Tape on Reel
Pitch - Mating Interface	2.00mm
Polarized to Mating Part	Yes
Polarized to PCB	Yes
Temperature Range - Operating	-40°C to +105°C
Termination Interface: Style	Surface Mount

**Electrical**

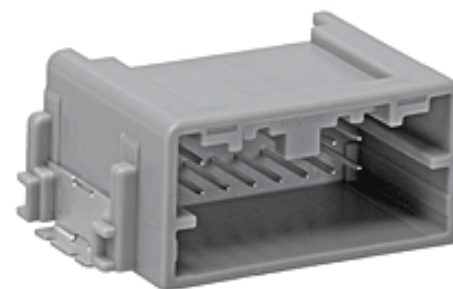
Current - Maximum per Contact	4.0A
Voltage - Maximum	500V

**Solder Process Data**

Duration at Max. Process Temperature (seconds)	35
Lead-free Process Capability	Wave Capable (TH only)
Max. Cycles at Max. Process Temperature	1
Process Temperature max. C	260

**Material Info**

**Reference - Drawing Numbers**



Series

image - Reference only

**EU RoHS**

**ELV and RoHS Compliant**

**REACH SVHC**

**Contains SVHC: No**  
**Low-Halogen Status**  
**Low-Halogen**

**China RoHS**



**Need more information on product environmental compliance?**

Email [productcompliance@molex.com](mailto:productcompliance@molex.com)  
 For a multiple part number RoHS Certificate of Compliance, [click here](#)

Please visit the [Contact Us](#) section for any non-product compliance questions.

**Search Parts in this Series**

[34897Series](#)

**Mates With**

[34824 Mini50™ Unsealed Dual Row Receptacle](#)

**Use With**

[560023 CTX50 Receptacle Terminal Unsealed](#)

This document was generated on 04/24/2015

**PLEASE CHECK [WWW.MOLEX.COM](http://WWW.MOLEX.COM) FOR LATEST PART INFORMATION**