

**PLEASE CHECK WWW.MOLEX.COM FOR LATEST PART INFORMATION**

**Part Number:** [170001-0112](#)  
**Status:** **Active**  
**Overview:** [Mega-Fit® Power Connectors](#)  
**Description:** [Mega-Fit® Receptacle Housing, Dual Row, 12 Circuit, Glow-Wire Compliant, Bag](#)

**Documents:**

<a href="#">3D Model</a>	<a href="#">Application Specification AS-76823-100 (PDF)</a>
<a href="#">Drawing (PDF)</a>	<a href="#">Test Summary TS-170001-001 (PDF)</a>
<a href="#">Product Specification PS-76823-100 (PDF)</a>	<a href="#">RoHS Certificate of Compliance (PDF)</a>

**Agency Certification**

CSA	LR19980
UL	E29179

**General**

Product Family	Crimp Housings
Series	<a href="#">170001</a>
Application	Power, Wire-to-Board, Wire-to-Wire
Overview	<a href="#">Mega-Fit® Power Connectors</a>
Product Name	Mega-Fit®
UPC	887191246833

**Physical**

Circuits (maximum)	12
Circuits Detail	12
Color - Resin	Black
Flammability	94V-2
Gender	Male
Glow-Wire Compliant	Yes
Lock to Mating Part	Yes
Material - Resin	Nylon
Net Weight	5.600/g
Number of Rows	2
Packaging Type	Bag
Panel Mount	No
Pitch - Mating Interface	5.70mm
Pitch - Termination Interface	5.70mm
Polarized to Mating Part	Yes
Temperature Range - Operating	-40°C to +120°C

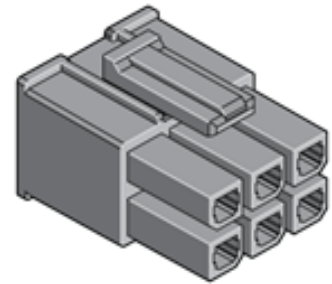
**Electrical**

Current - Maximum per Contact	23.0A
-------------------------------	-------

**Material Info**

**Reference - Drawing Numbers**

Application Specification	AS-76823-100
Product Specification	PS-76823-100
Sales Drawing	SD-170001-0100
Test Summary	TS-170001-001



Series

image - Reference only

**EU RoHS**

**ELV and RoHS Compliant**  
**REACH SVHC Contains SVHC: No**  
**Low-Halogen Status Not Low-Halogen**

**China RoHS**



**Need more information on product environmental compliance?**

Email [productcompliance@molex.com](mailto:productcompliance@molex.com)  
 For a multiple part number RoHS Certificate of Compliance, [click here](#)

Please visit the [Contact Us](#) section for any non-product compliance questions.

**Search Parts in this Series**

[170001Series](#)

**Mates With**

Mega-Fit® Header [76825](#) , [76829](#) , [172064](#) , [172065](#)

**Use With**

Mega-Fit® Crimp Terminals, [172063](#)