



ITT Industries

Assembly instruction

APD 6-/7-way

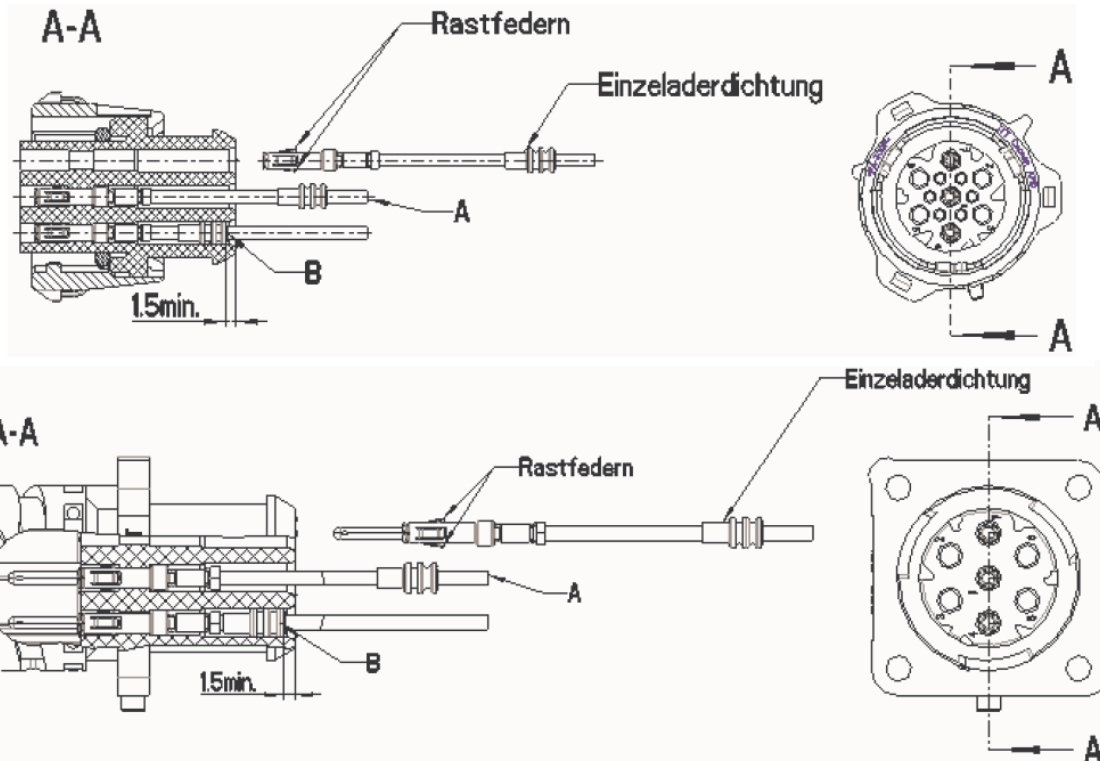
CAS25022E

6.) Insertion and Extraction of Stamped Contacts

There is no need of insertion tools.

A.) The stamped contacts get mounted from the rear panel of the connector into the contact cavity by hand until it snaps in. To the front, the contact is bounded by the shoulder at the contact.

B.) Single Wire Seal push into connector housing. (Optional)

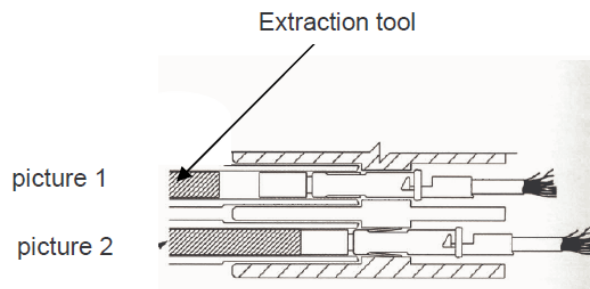


Extraction

The extraction of stamped contacts, pin and socket from the housing occurs from the front with the extraction tool. The extraction tool gets inserted into the contact cavity on the mating face. See [picture 1](#). Eventually the snap springs get clamped and the cable can be pulled out from the cable face. See [picture 2](#).

Extraction tool

Order number: 192922-1450



Bearbeitet:
AKU / WD

Gepüft:
NK

Norm:
HES

Änd.-Stand:
-4263W

Änd.-Datum:
11.06.2012