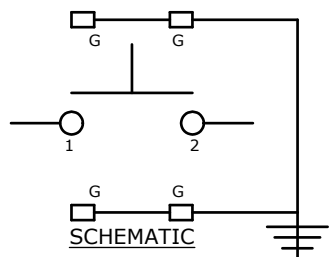
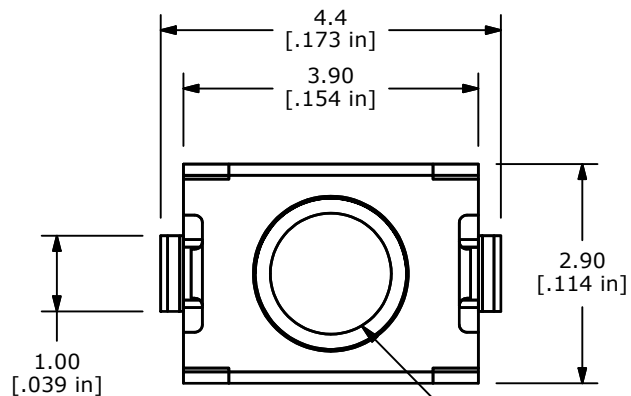


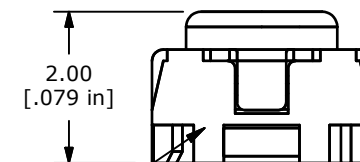
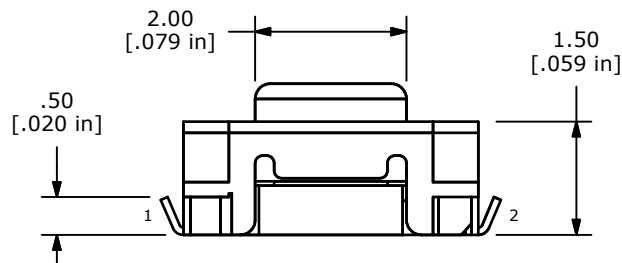
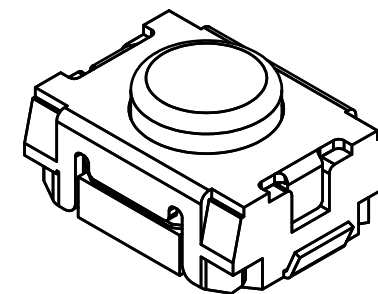
**PCB MOUNTING**  
GROUND TERMINALS ARE OPTIONAL



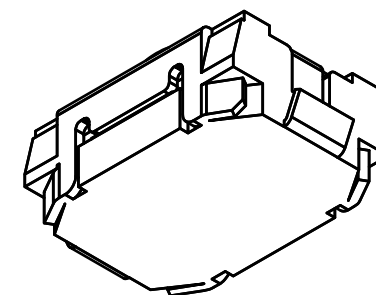
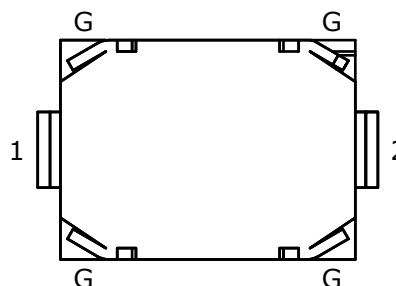
- NOTES:
1. ALL DIMENSIONS IN MM
  2. GENERAL TOLERANCE: X.X=±0.4  
X.XX=±0.25
  3. TERM. NOS. FOR REFERENCE ONLY.
  4. RATING: 12VDC, 50mA
  - ▲ 5. OPERATING FORCE: 160 ± 50 GRAMS
  6. TRAVEL: 0.2mm ±0.1
  7. CONTACT RESISTANCE: 100 mΩ MAX. (INITIAL)
  8. MECHANICAL/ELECTRICAL LIFE 200,000 CYCLES MIN.
  9. PACKAGE: TAPE AND REEL - 2500 PIECES PER REEL
  10. ▲ DENOTES CRITICAL PARAMETER
  11. 2002/95/EC (ROHS) COMPLIANT



ACTUATOR COLOR: IVORY



HOUSING COLOR: NATURAL



D	21622	ADDED HOUSING COLOR	10/14/14	AS
C	21300	REDRAW	11/13/13	EBP
B	21242	ADDED ACTUATOR COLOR	9/19/13	EBP
A	21000	Released For Production	2/1/2013	rc
REV	PCR NO	DESCRIPTION	DATE	BY

THE INFORMATION CONTAINED IN THIS DOCUMENT IS PROPRIETARY TO E-SWITCH AND IS NOT TO BE COPIED OR TRANSFERRED



TITLE TL1015AF160QG

SCALE	DATE	DR	DWG	REV
10:1	2/1/2013	rc	P420000	D